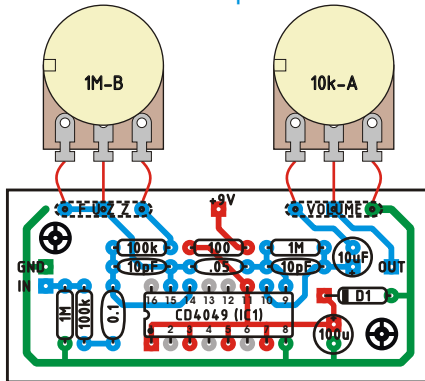


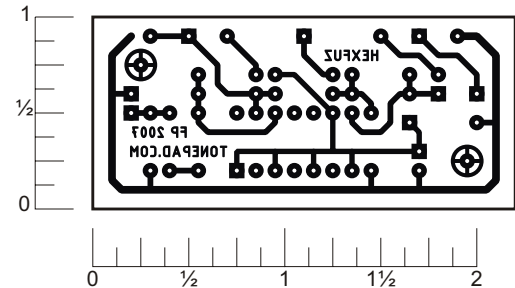
# HEX SOUND FUZZ

Rev.1.Nov.11.2007

Build a Craig Anderton Tube Sound Fuzz or a Red Llama in this layout. This circuit uses a CD4049 Hex inverter, which contains 6 inverting units, only two are used in this circuit, so the others are disabled by connecting their inputs to the positive voltage supply and leaving the output disconnected. This layout also uses different pins than the original schematic for aesthetic reasons, the sound is not affected by these changes. Layout populated as "Tube sound fuzz", replace parts with "Llama" parts if implementing those mods. Thanks to Justin Philpott and Steve Cerutti for the original schematics. Off board components except for the potentiometers are not shown on the layout. Trademarks are property of their owners. Visit [www.tonepad.com](http://www.tonepad.com) for more!



LAYOUT



READY TO TRANSFER

## Parts List (CA Tube Sound Fuzz)

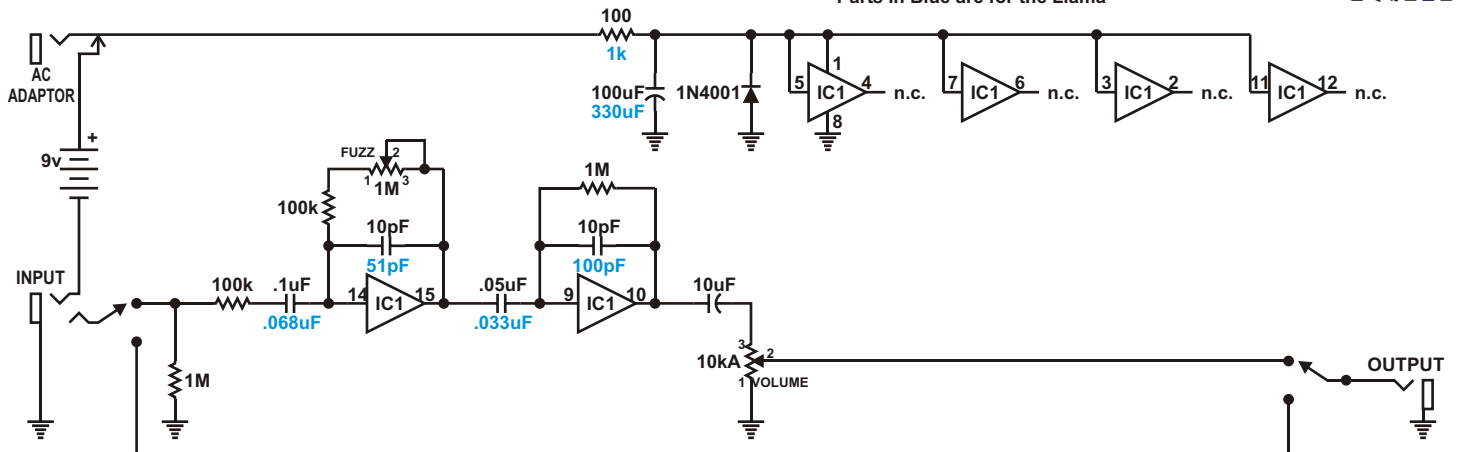
Resistors	Capacitors
1 - 100ohm	2 - 10pF
2 - 100k	1 - 0.1μF
2 - 1M	1 - 0.05μF
	1 - 10μF
	1 - 100μF
Pots	
1 - 1M	
1 - 10k Log	
ICs	
1 - CD4049	

## Parts List (Llama mod)

Resistors	Capacitors
1 - 1k	1 - 51pF
2 - 100k	1 - 100pF
2 - 1M	1 - 0.068μF
	1 - 0.033μF
	1 - 10μF tant.
	1 - 330μF
Pots	
1 - 1M	
1 - 10k Log	
ICs	
1 - CD4049	
1 - 1n4001 diode	

## Schematic

Parts in Blue are for the Llama



Layout and presentation by Francisco Peña 2001-2007.  
All rights reserved. Authorization for personal use only.  
any commercial use is forbidden.  
Permission for posting/serving limited to  
<http://www.tonepad.com>  
Permission refused for posting from other sites.