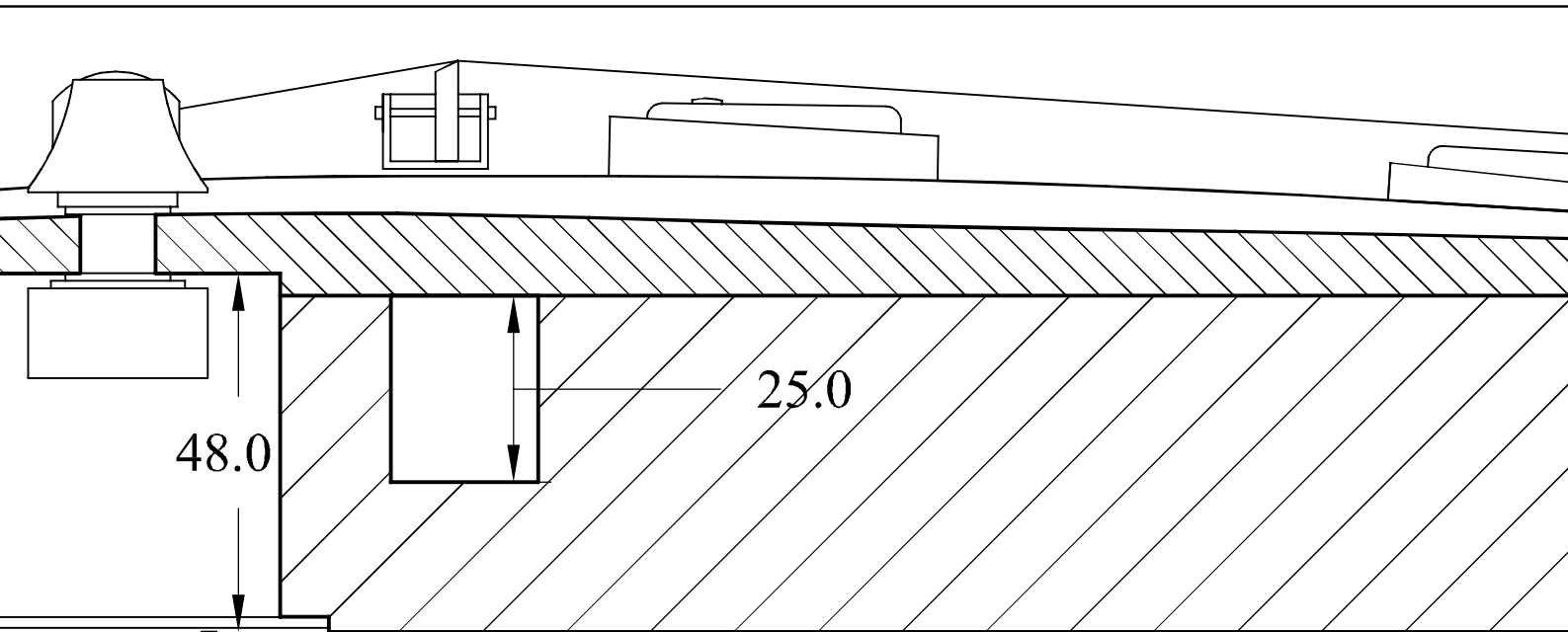
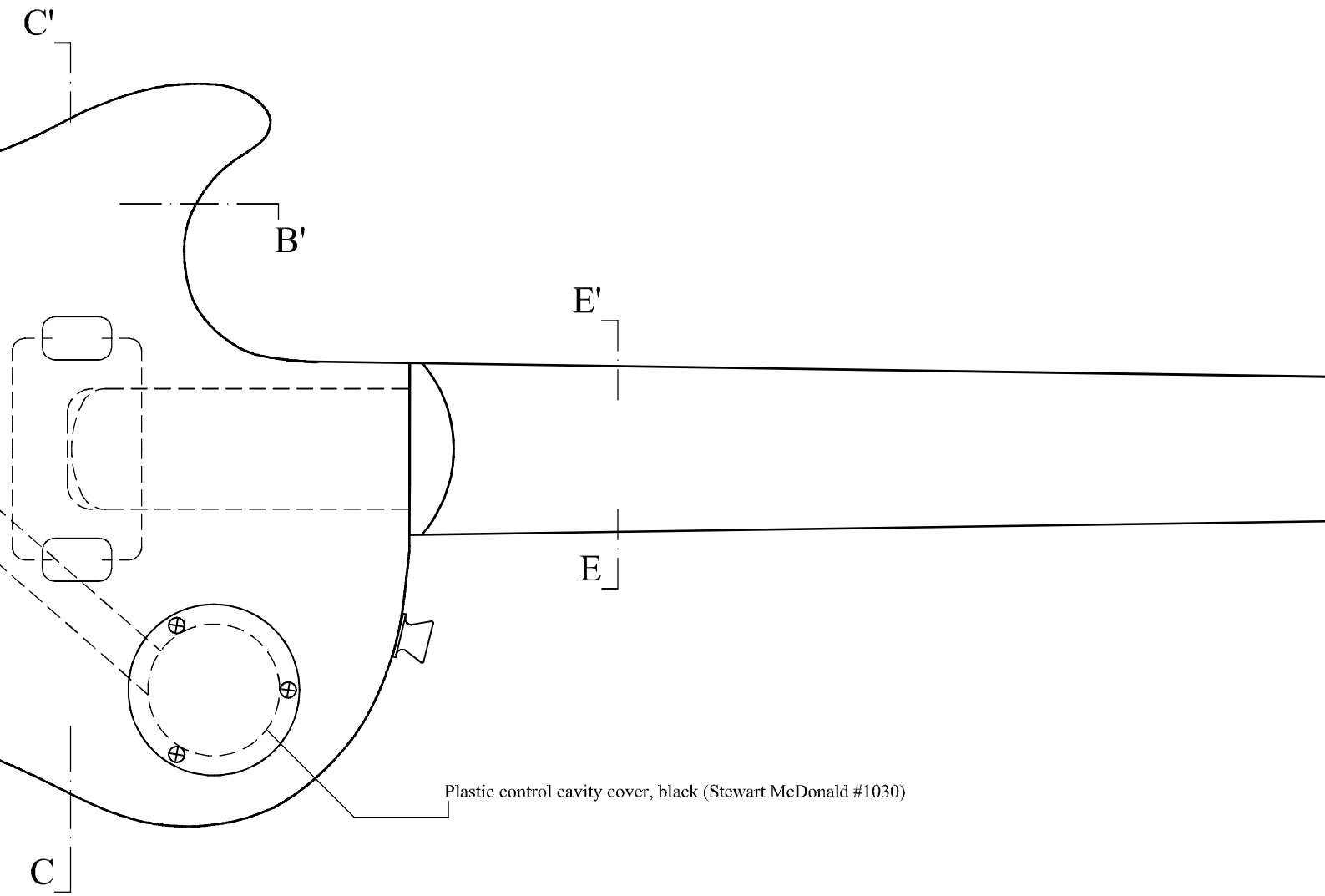
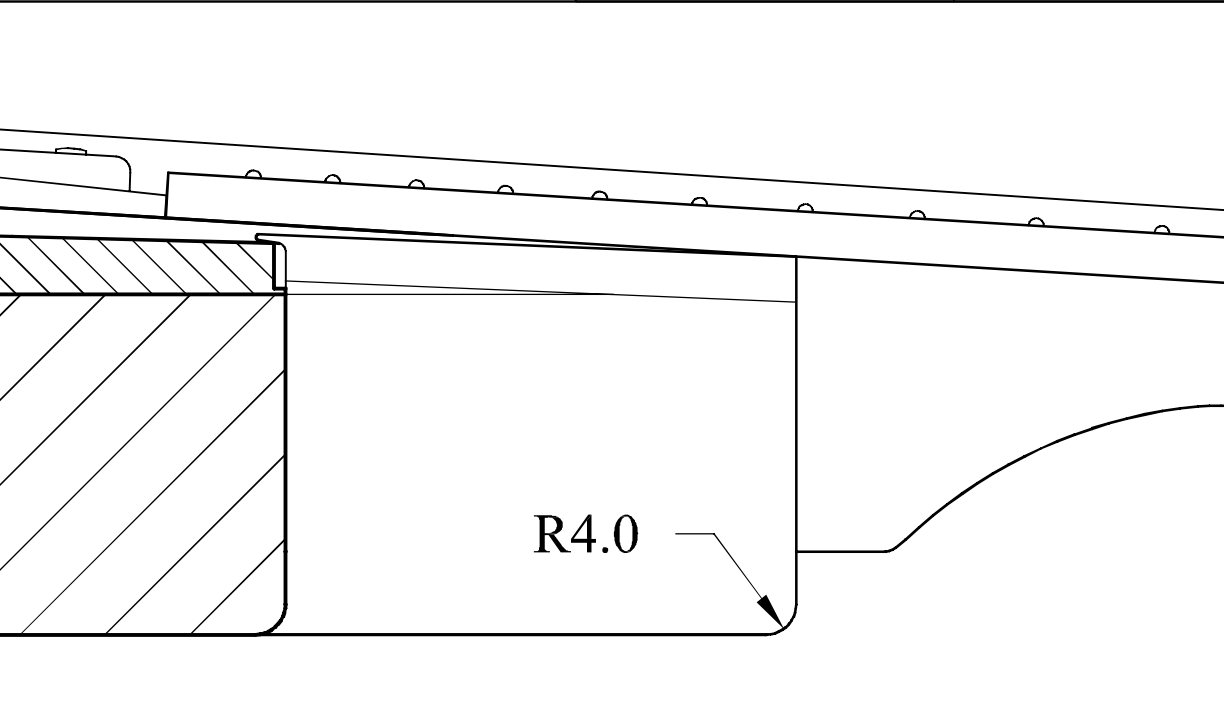
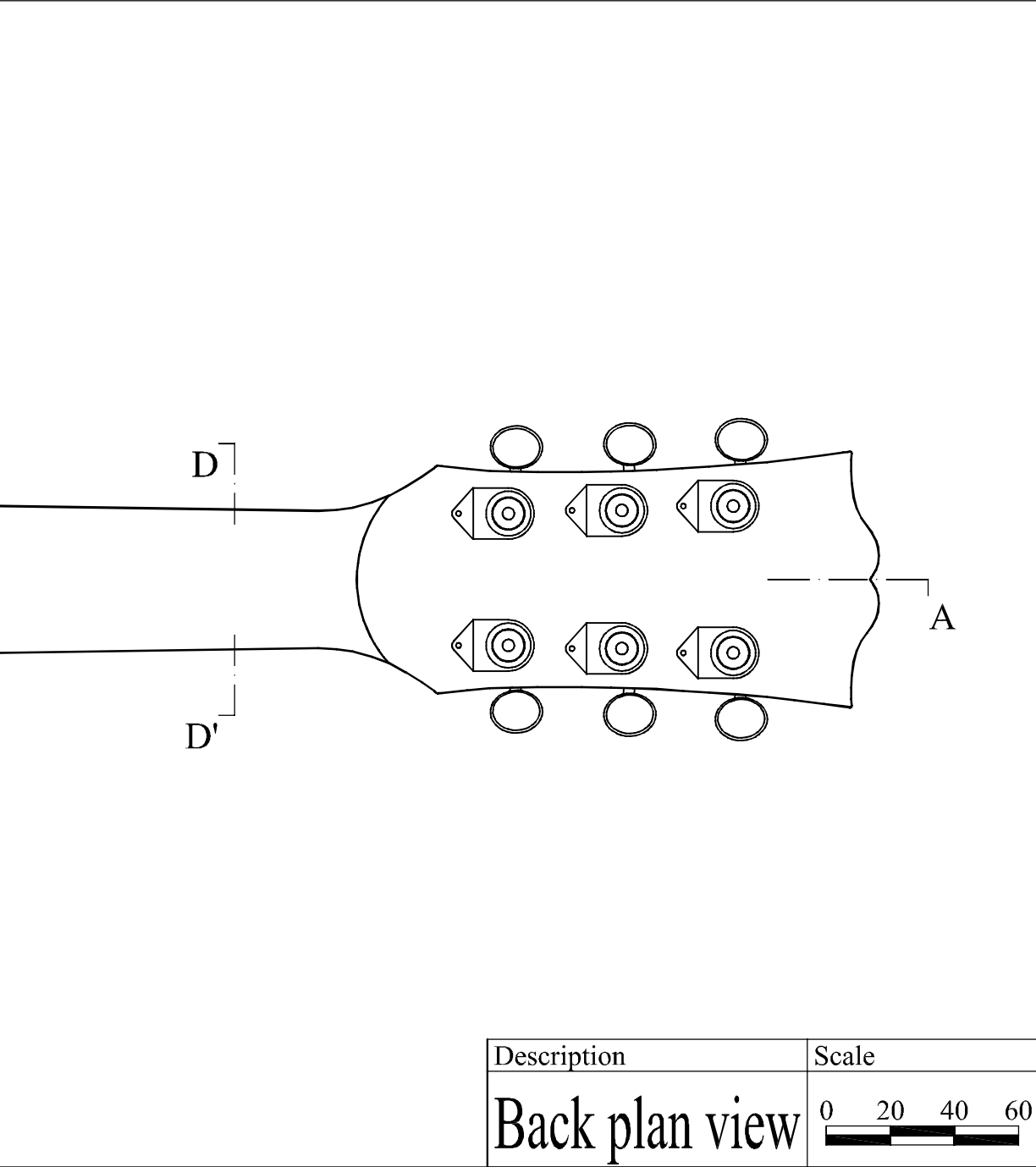


Stewart McDonald #0092)

black (Stewart McDonald #1030)





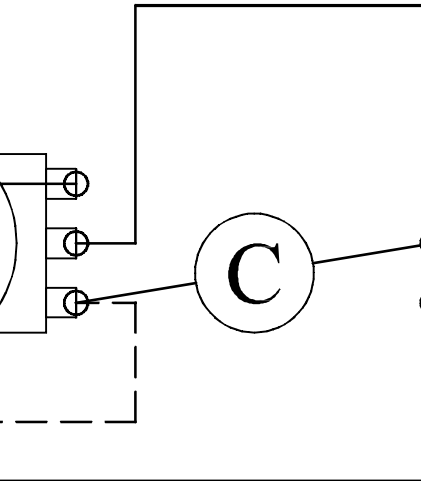
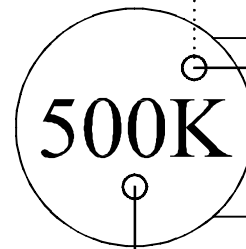
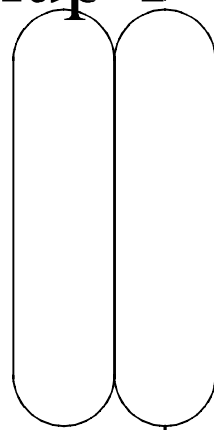
Description	
Electronics	
Legend:	
-----	Black wire
-----	Braided metal wire
C	0.05mfd capacitor
250K	250K LOG potentiometer
500K	500K LOG potentiometer
Pickup 1	490R Gibson "rhythm" humbucker
Pickup 2	498T Gibson "treble" humbucker
Bridge	Bridge (connected to ground)
S	3-way toggle switch
Jack	Mono jack

Description	Scale
Section BB'	0 10 20 30

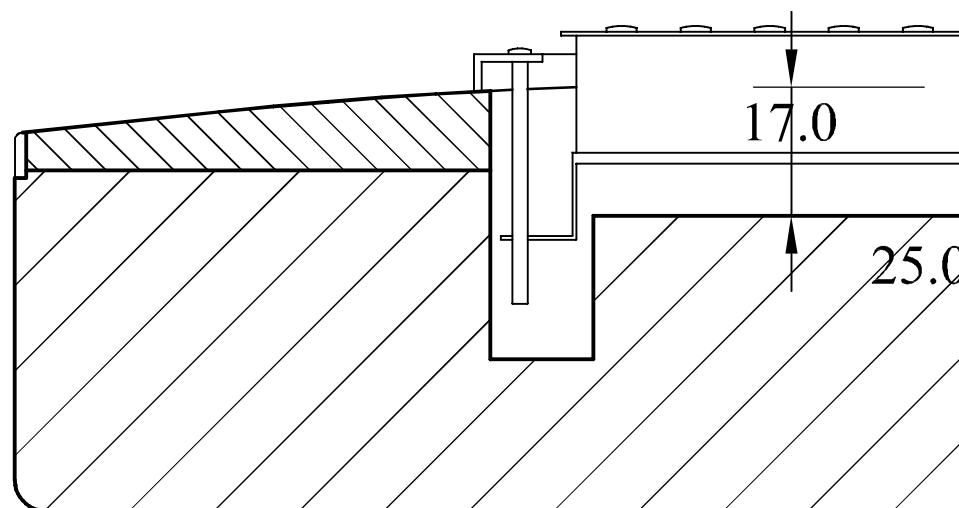
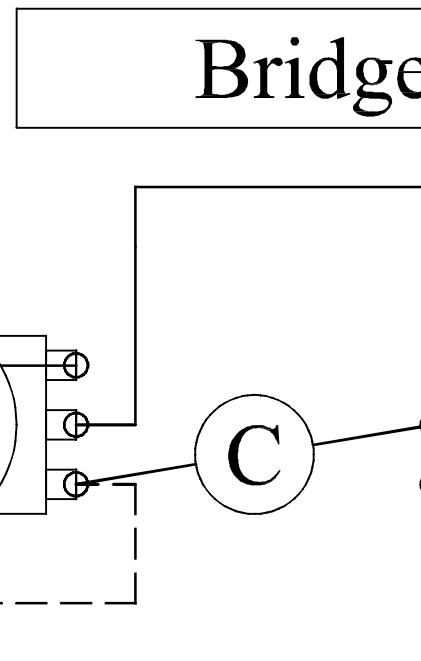
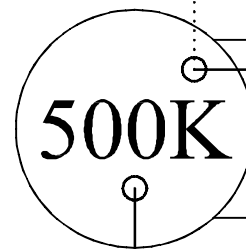
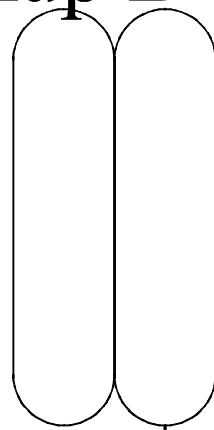
Description
Section CC'

S
e
re
or
ter
ter
ker
ker
nd)
ch
k

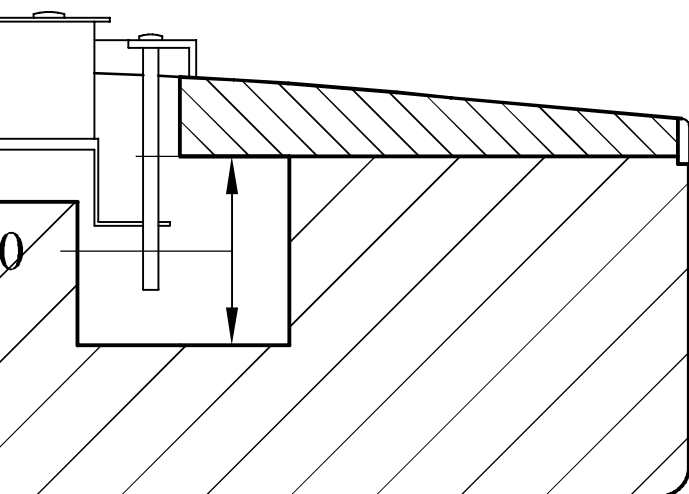
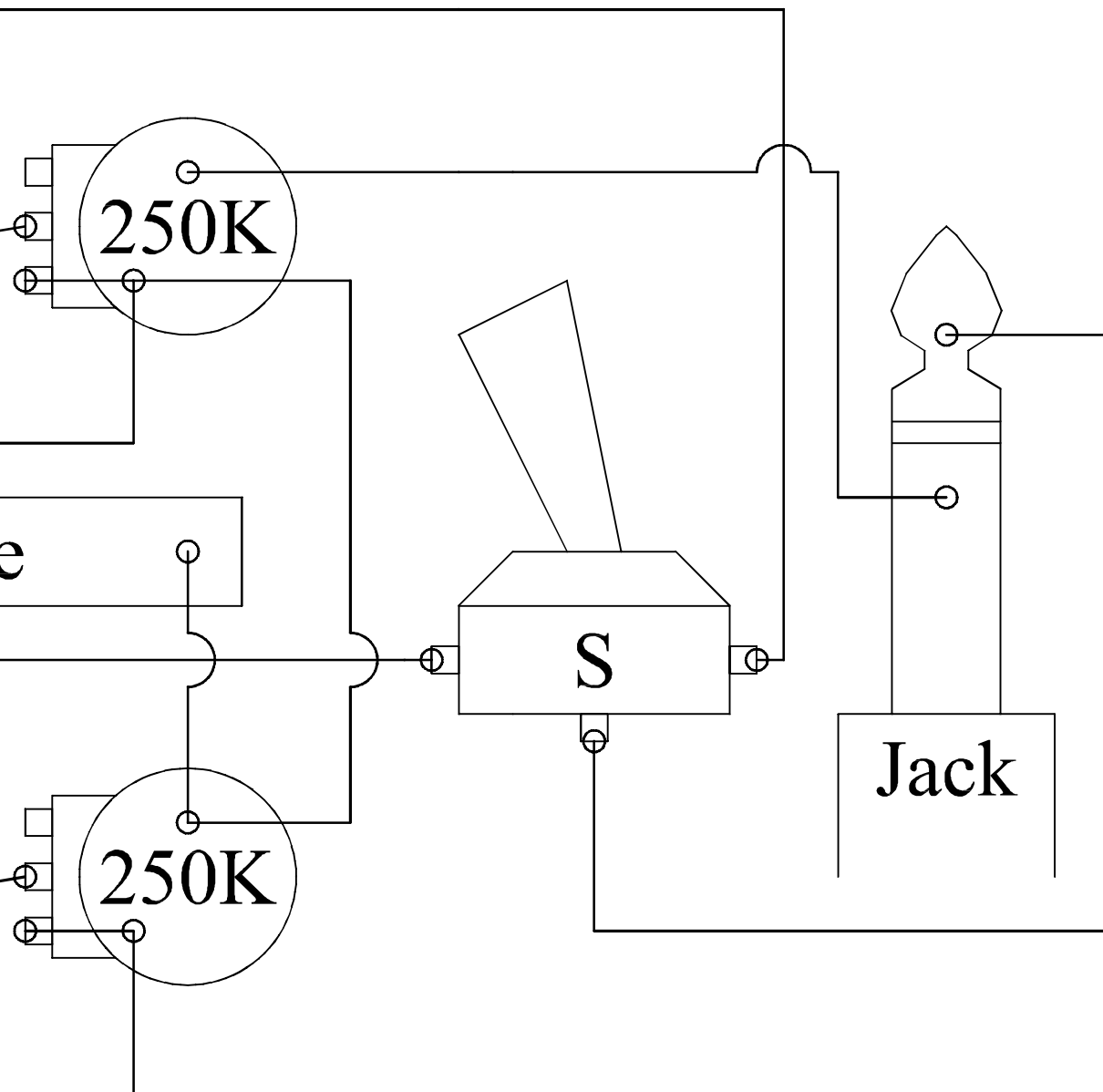
Pickup 1



Pickup 2



Scale	
0	10 20 30

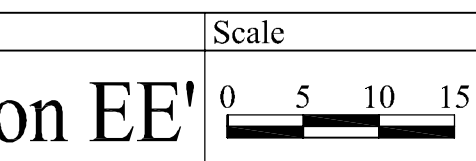
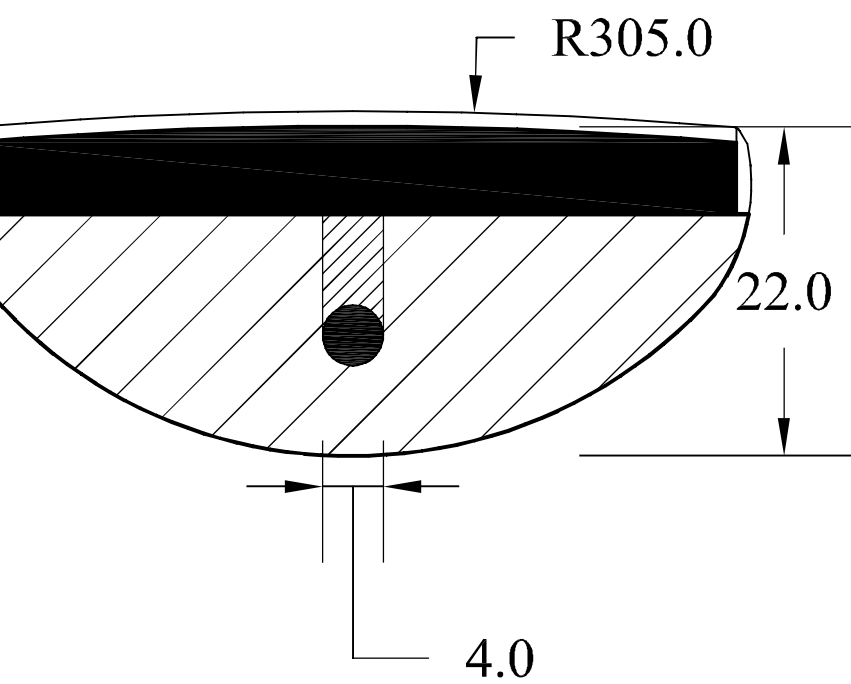
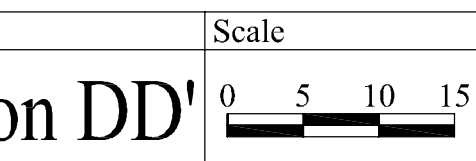
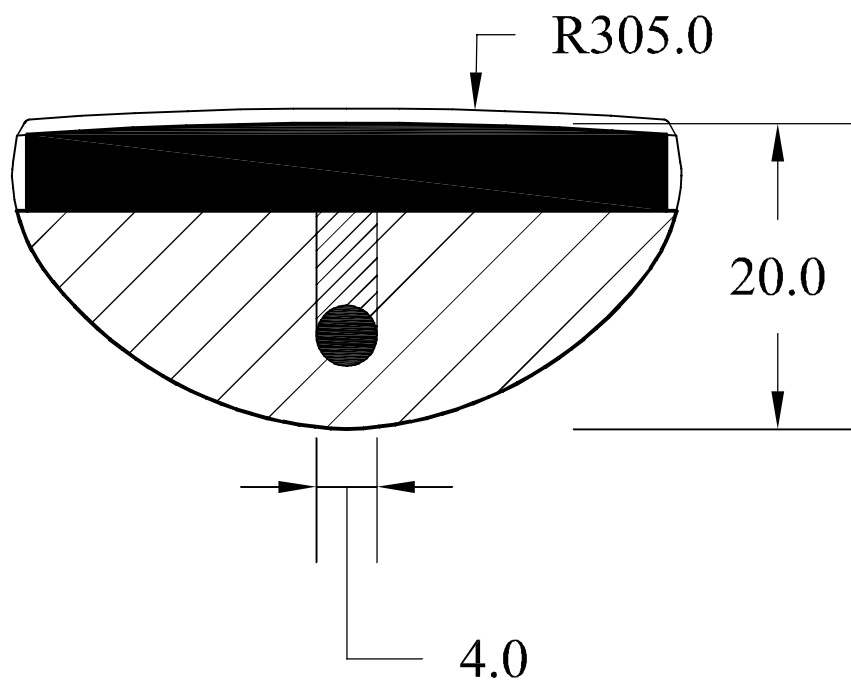


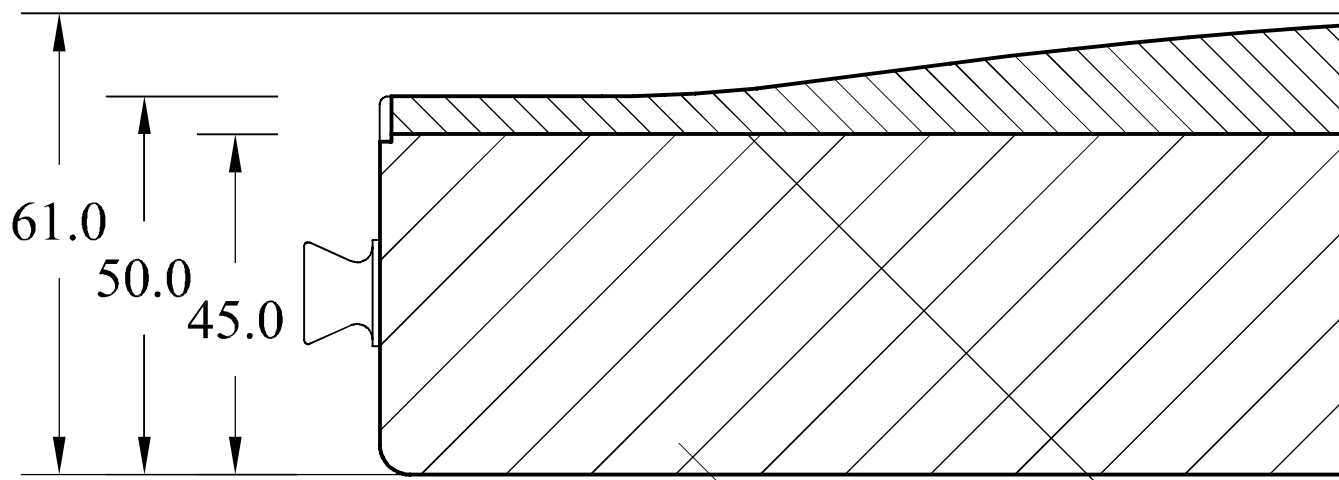
Description

Section

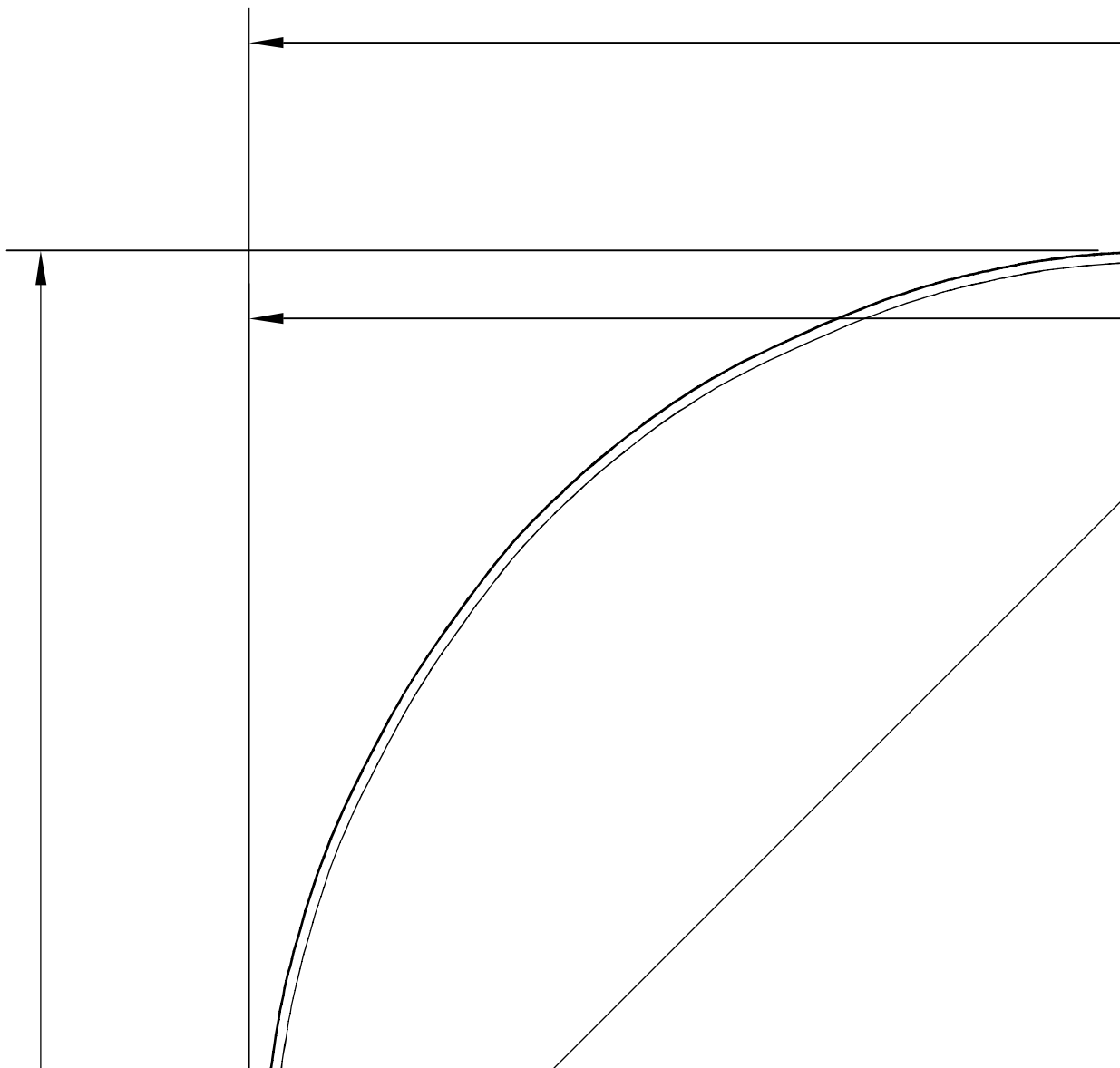
Description

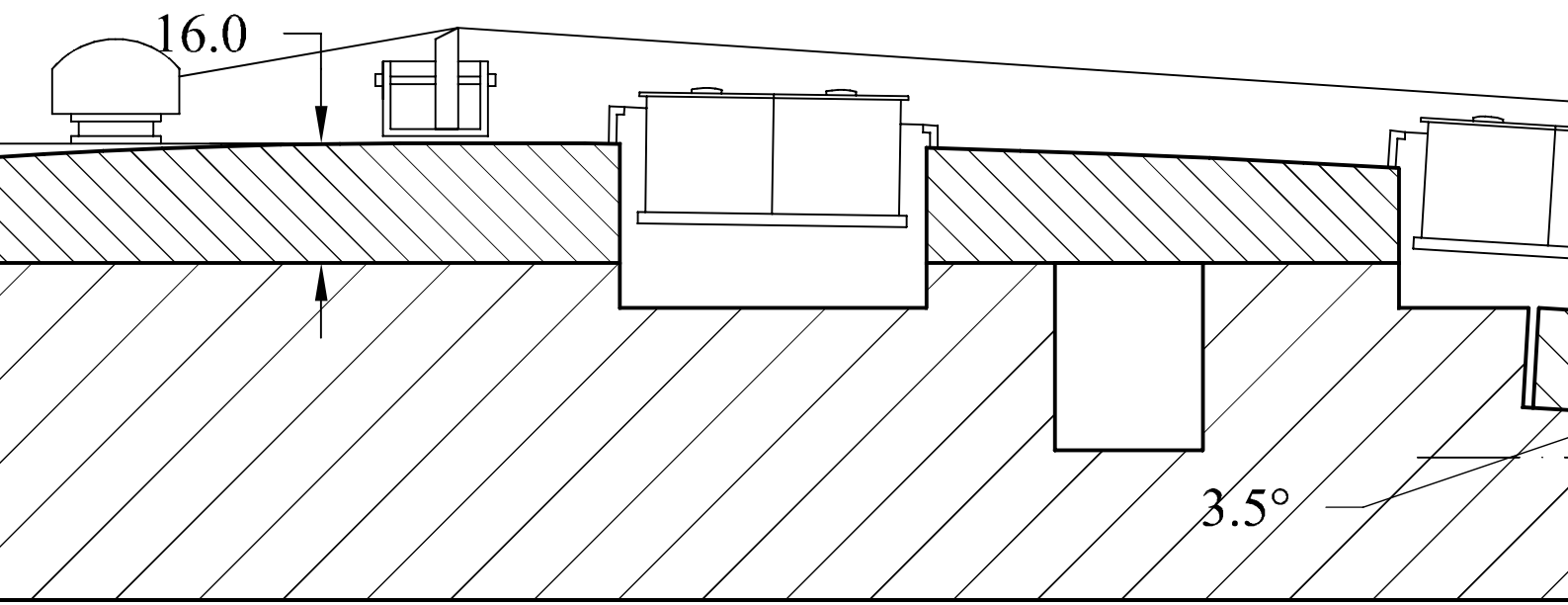
Section





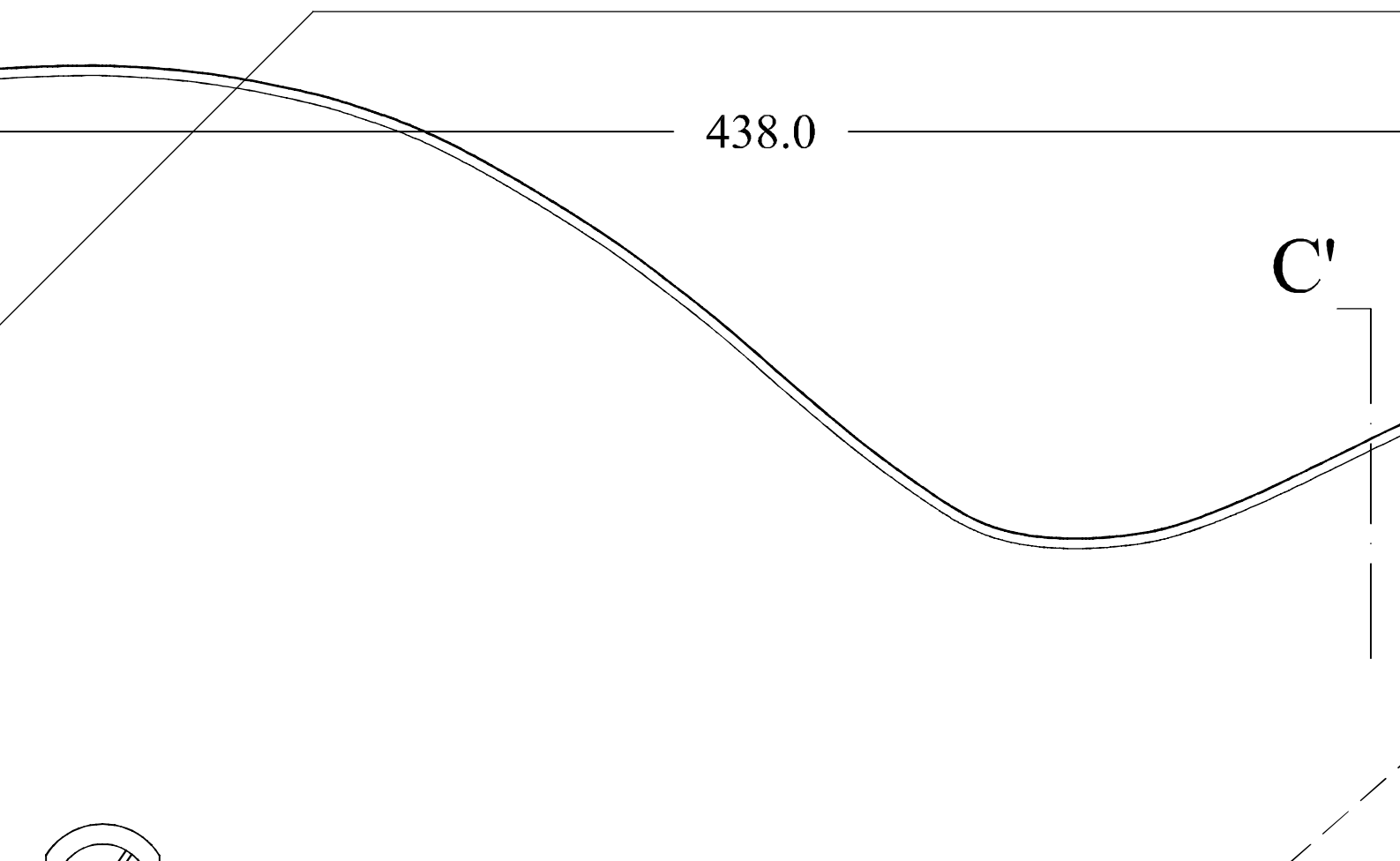
Description	Scale
Section AA'	0 10 20 30

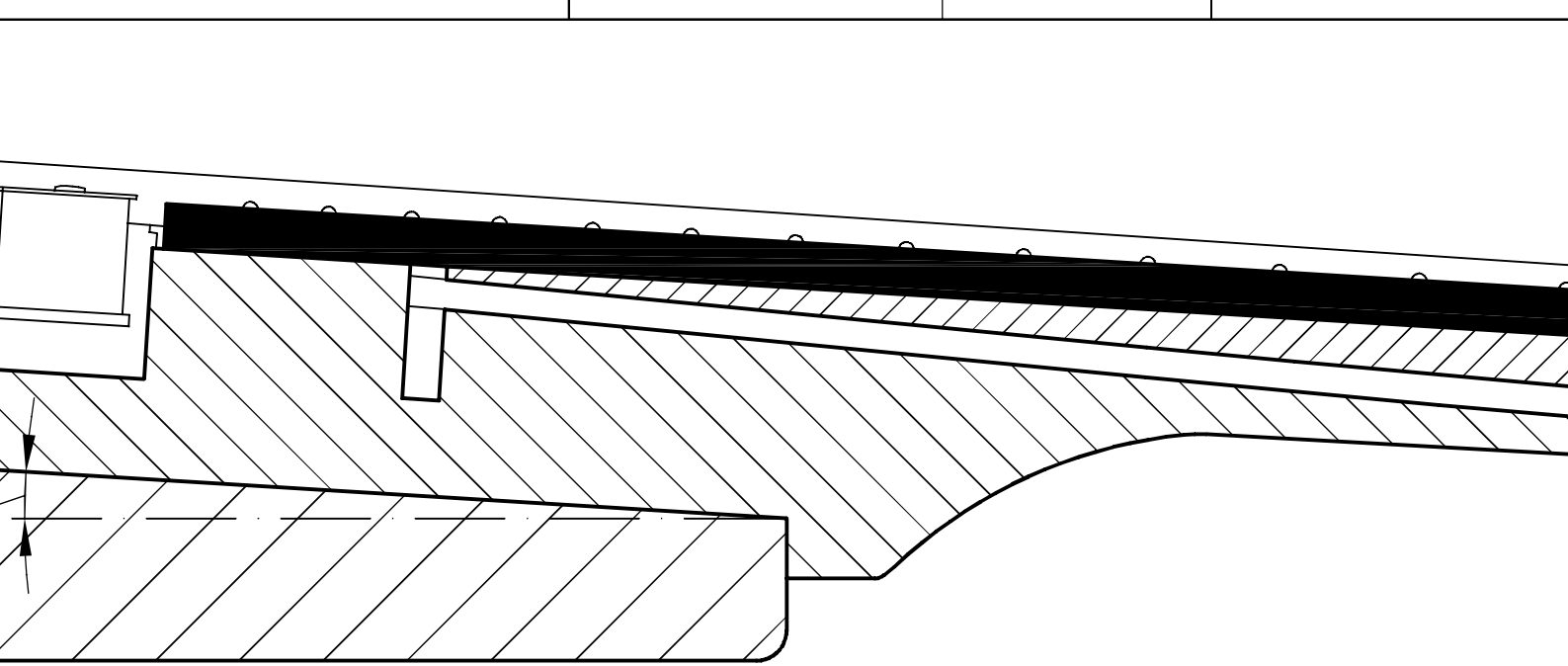




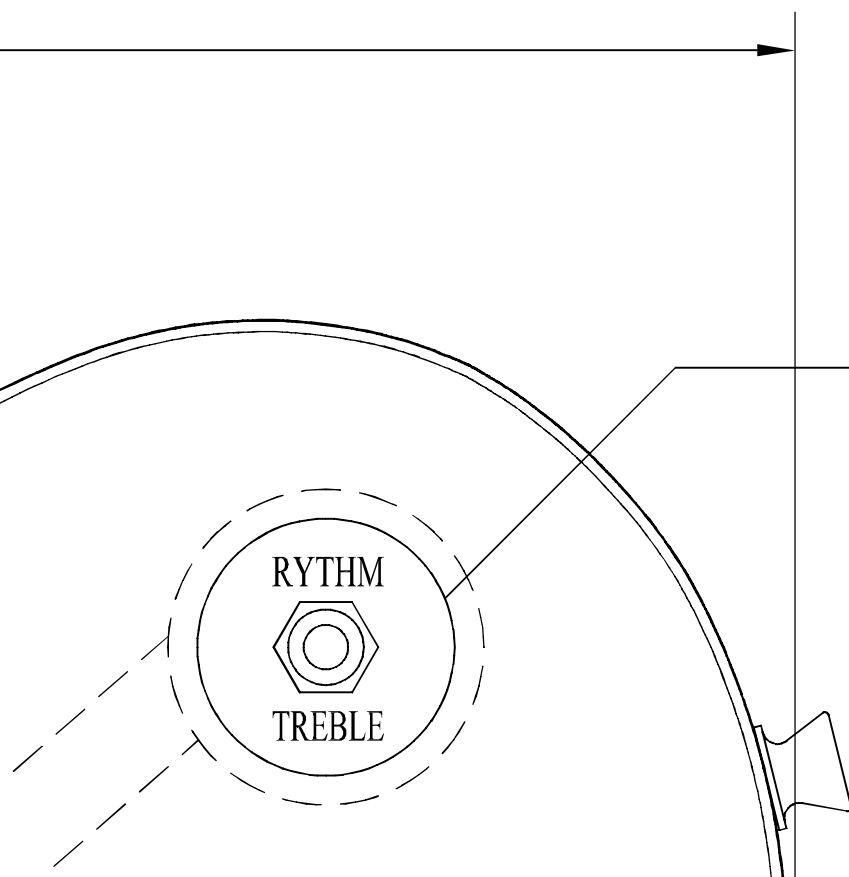
Maple top

Mahogany body



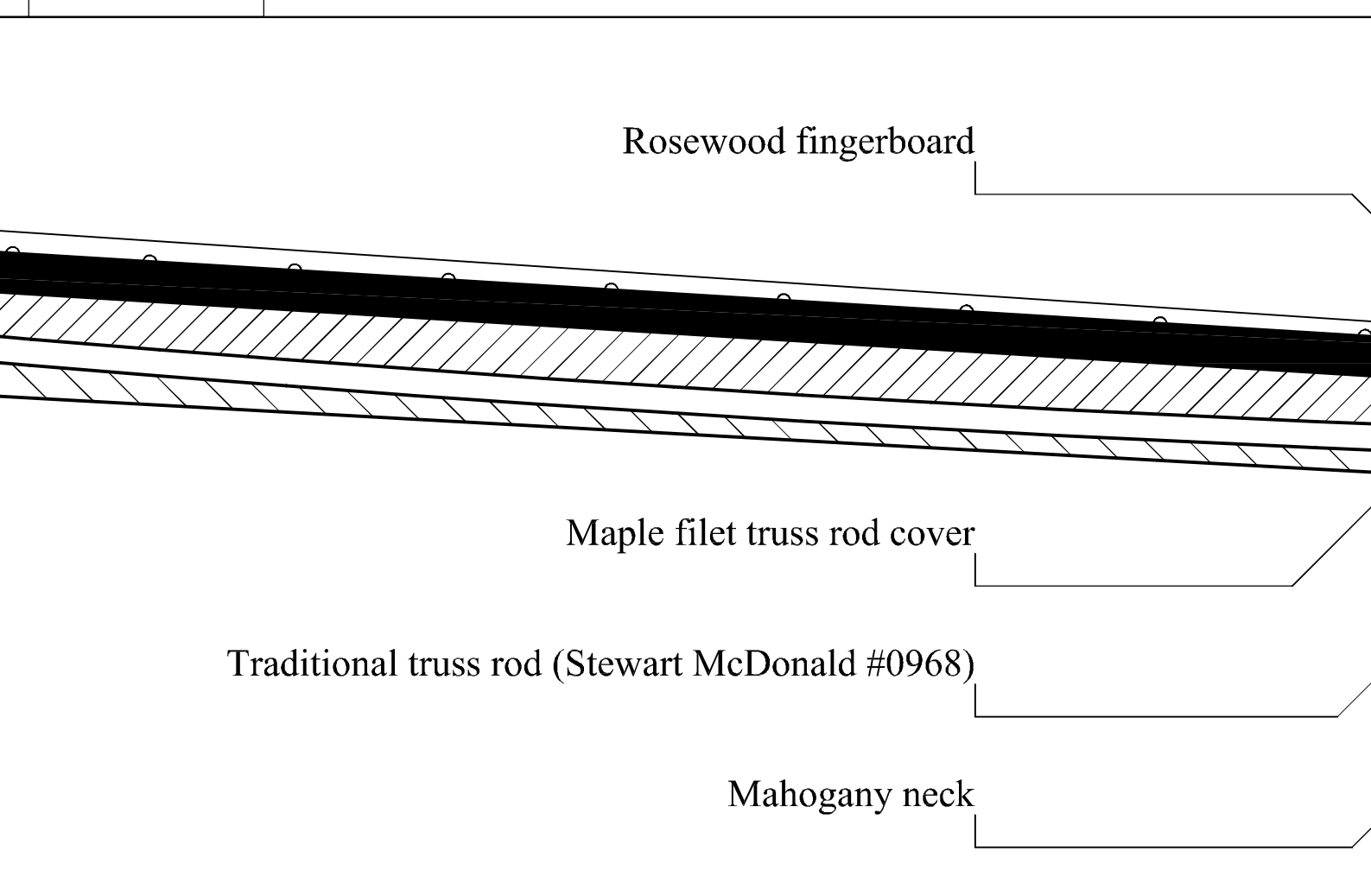


998.5



"Moth

E'



Standard strap buttons, chrome (Stewart McDonald #0170)

Vintage "tulip" tuners, chrome (Stewart McDonald #0912)

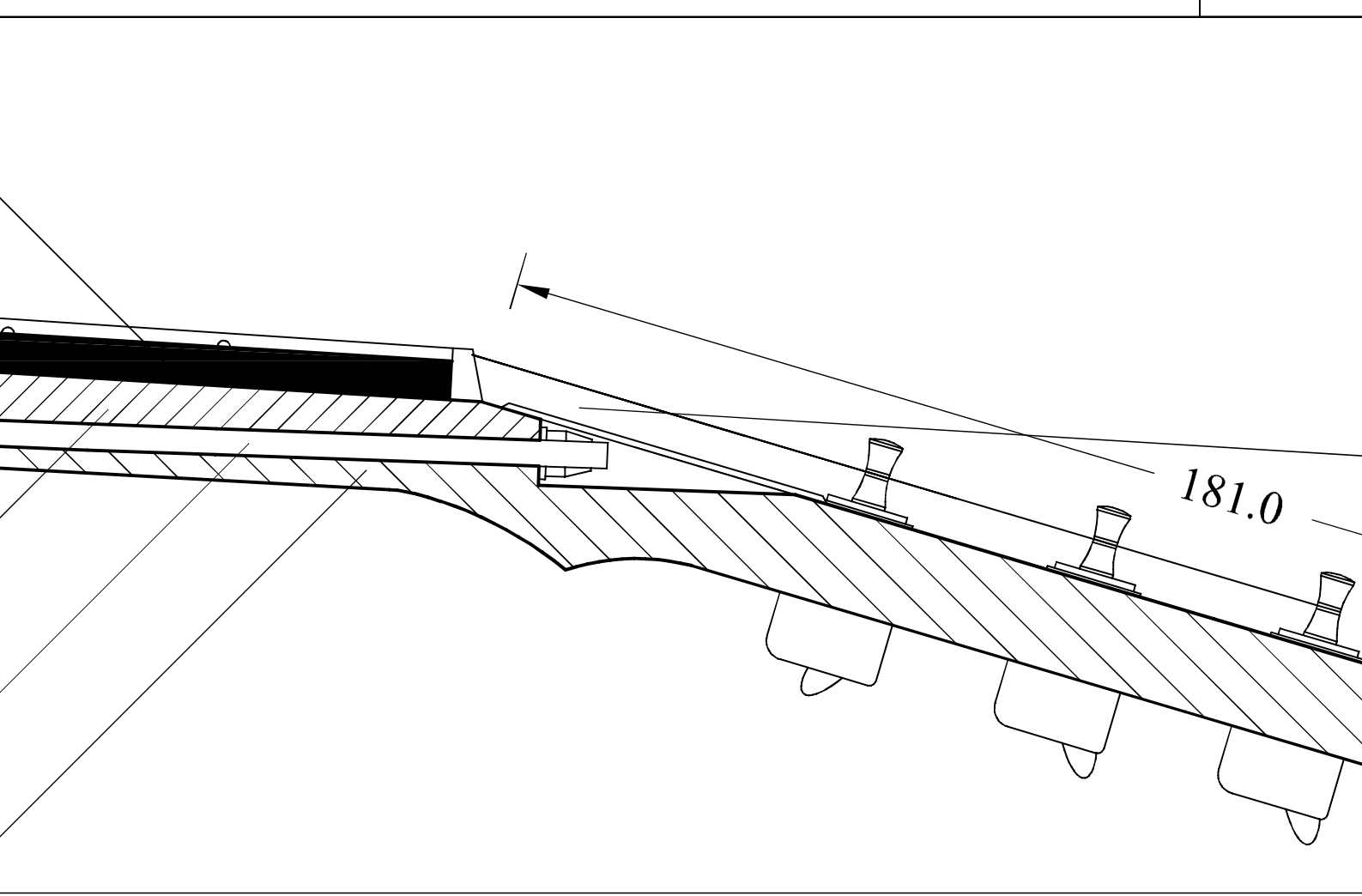
Plastic truss rod nut cover, black (Stewart McDonald #0711)

Plastic "Rythm/treble" ring, cream (Stewart McDonald #1151)

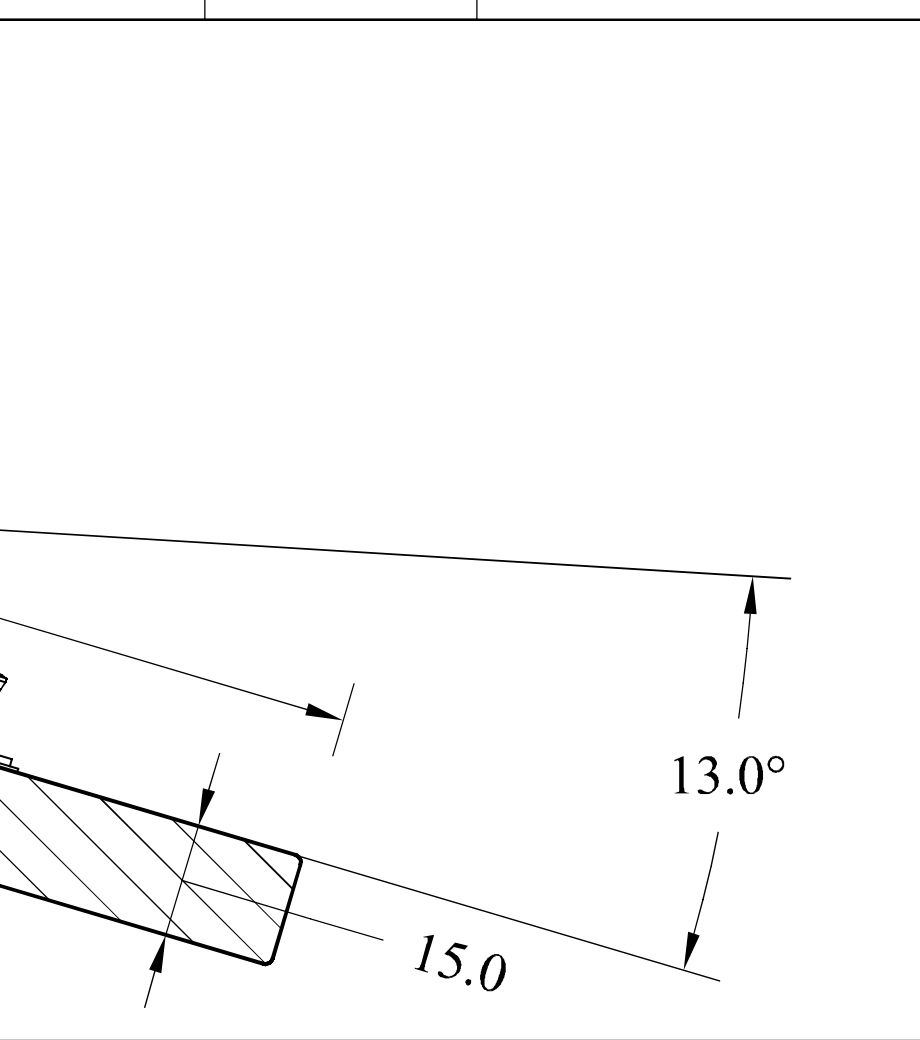
her-of-Pearl" inlay material, white (Stewart McDonald #0950)

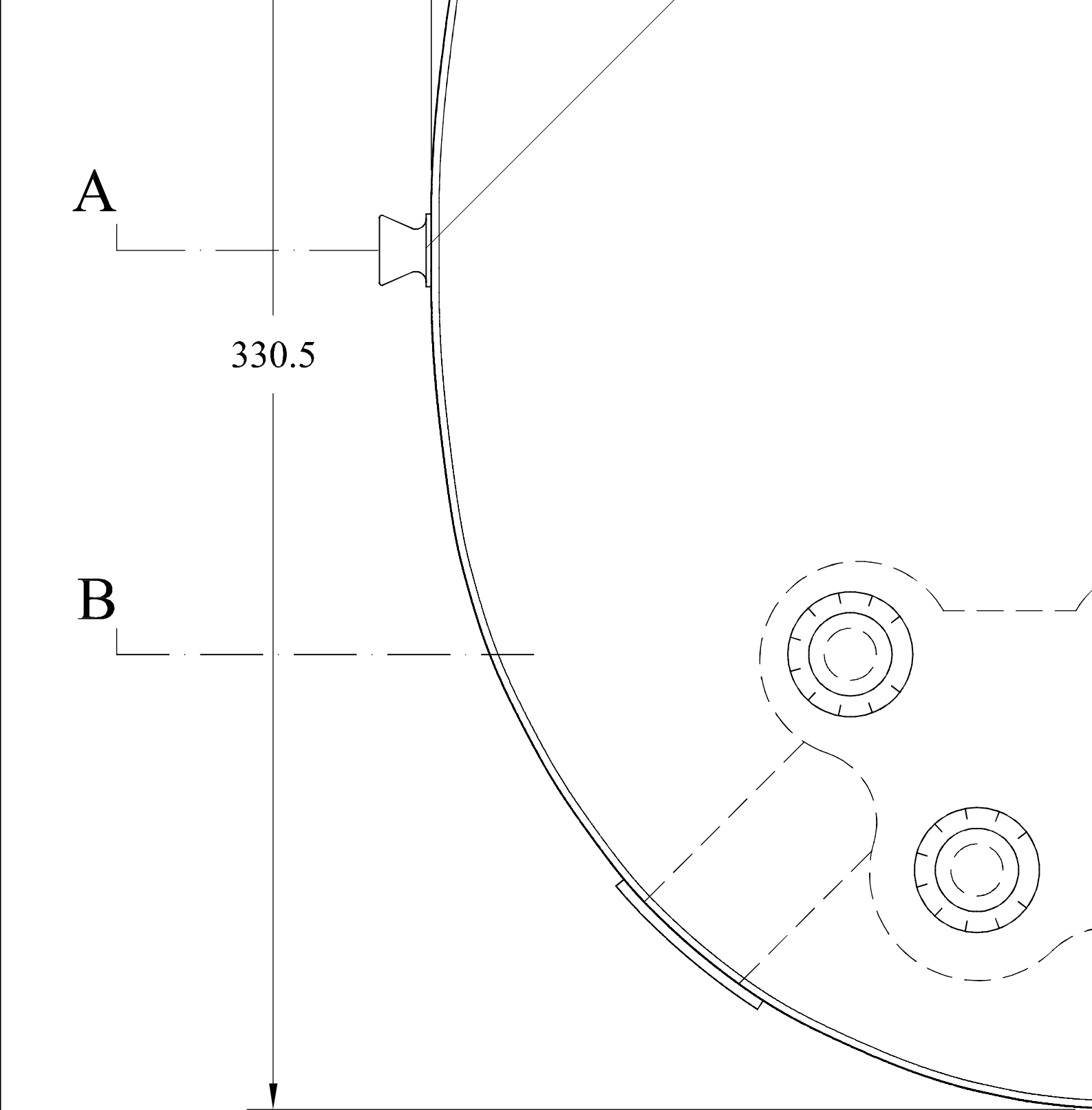
Bone nut for Gibson-style guitar (Stewart McDonald #0225)

Jumbo fretwire (Stewart McDonald #0149)

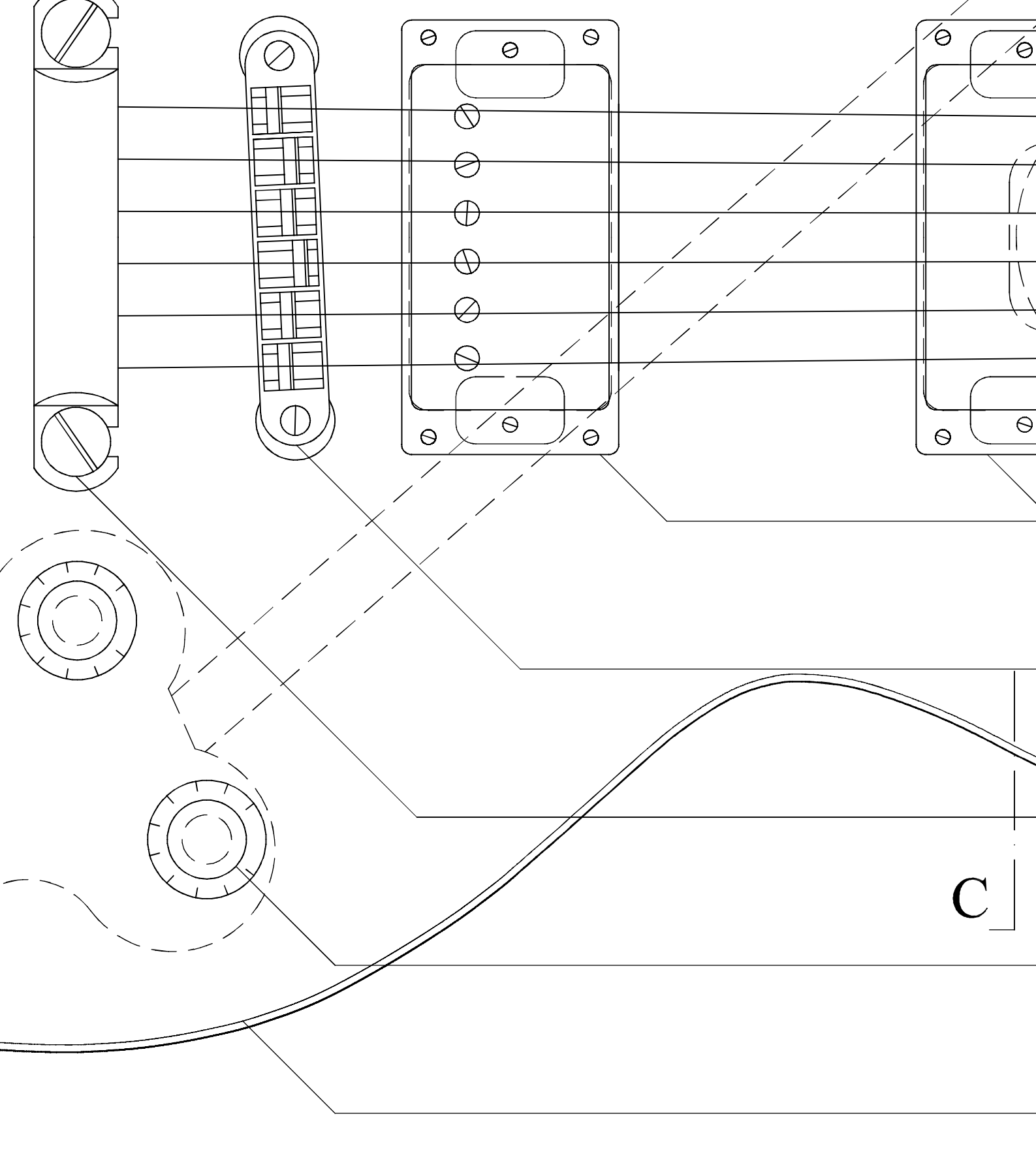


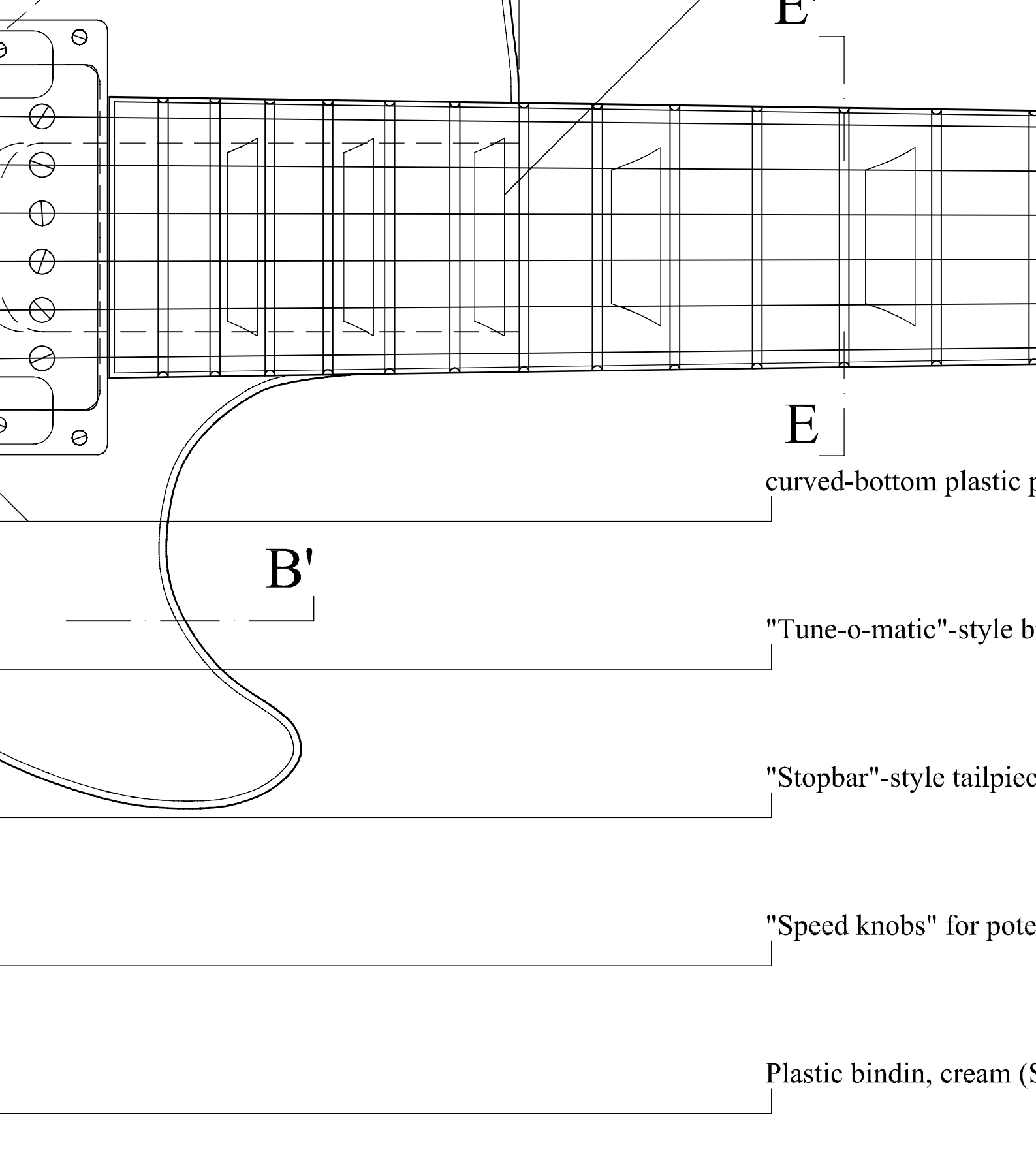
D'



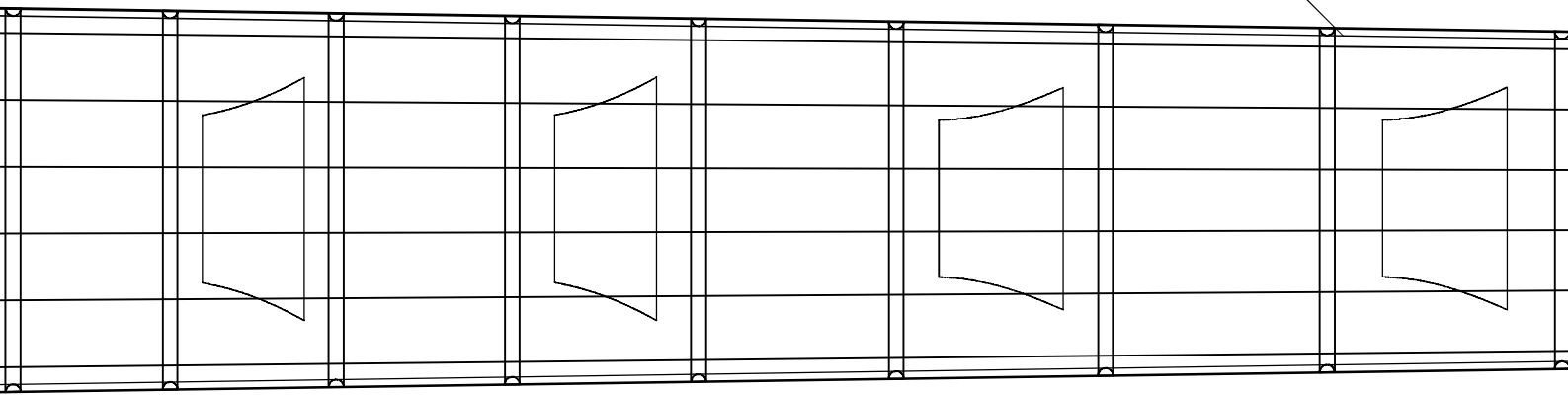


Description	Scale
Front plan view	0 10 20 30





Plastic binding, cream (Stewart McDonald # 4395)



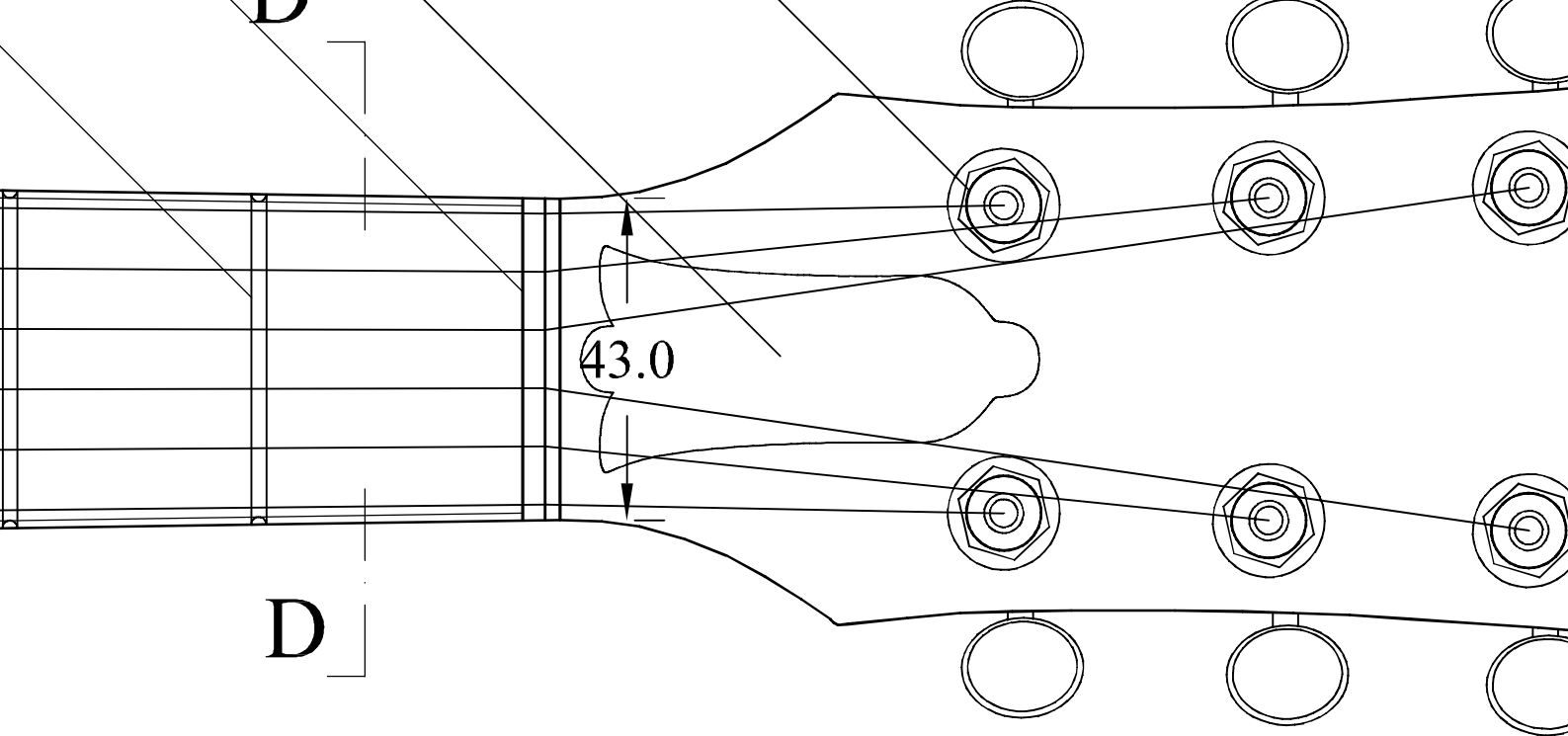
pickup ring set, cream (Allparts #AP733)

bridge, chrome (Stewart McDonald #0167)

ce, cream (Stewart McDonald #0168)

entimeter, gold (Stewart McDonald #0554-G)

(Stewart McDonald #4396, ou #4397)



Gibs

Drawing un

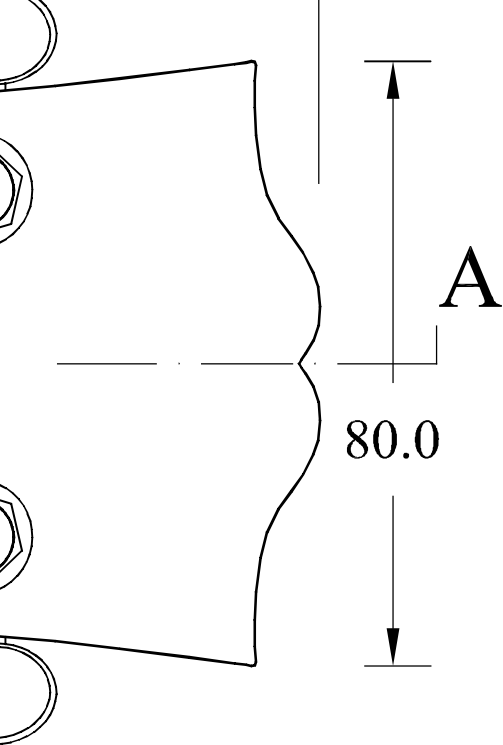
Dimensions

Drawn b

Benjar

Date:

05



Gibson LesPaul-style guitar

Units:	Specifications:
Dimensions and scales in mm	Scale length: 24,75 inches (629 mm)
Body:	Body: mahogany with maple top
	Glued mahogany neck
	22 fret fingerboard: rosewood
by: Amin Stouffs	Nut: bone
	Electronics: 3-way selector switch, individual volume and tone controls per pickup
	Finish: Nitrocellulose
	Pickups: Gibson 490R (neck) & Gibson 498T (bridge) or equivalent
5/01/2005	Bridge: Tune-o-matic with Stopbar tailpiece
	Tuners: Gibson "tulips"-style