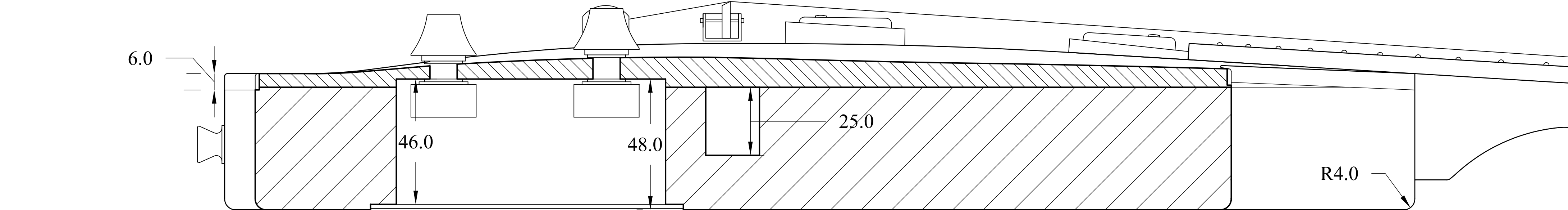


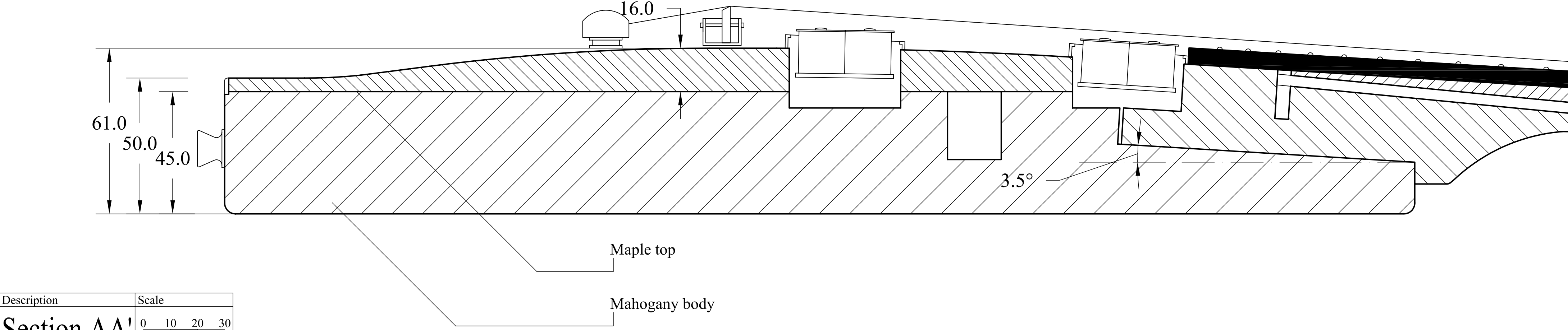
Back plan view

Description
Electronics
Legend:
Black wire
Braided metal wire
0.05mfd capacitor
250K 250K LOG potentiometer
500K 500K LOG potentiometer
Pickup 1 490 Gibson "yair" humbucker
Pickup 2 490 Gibson "yair" humbucker
Bridge Bridge (connected to ground)
3-way toggle switch
Jack Mono jack

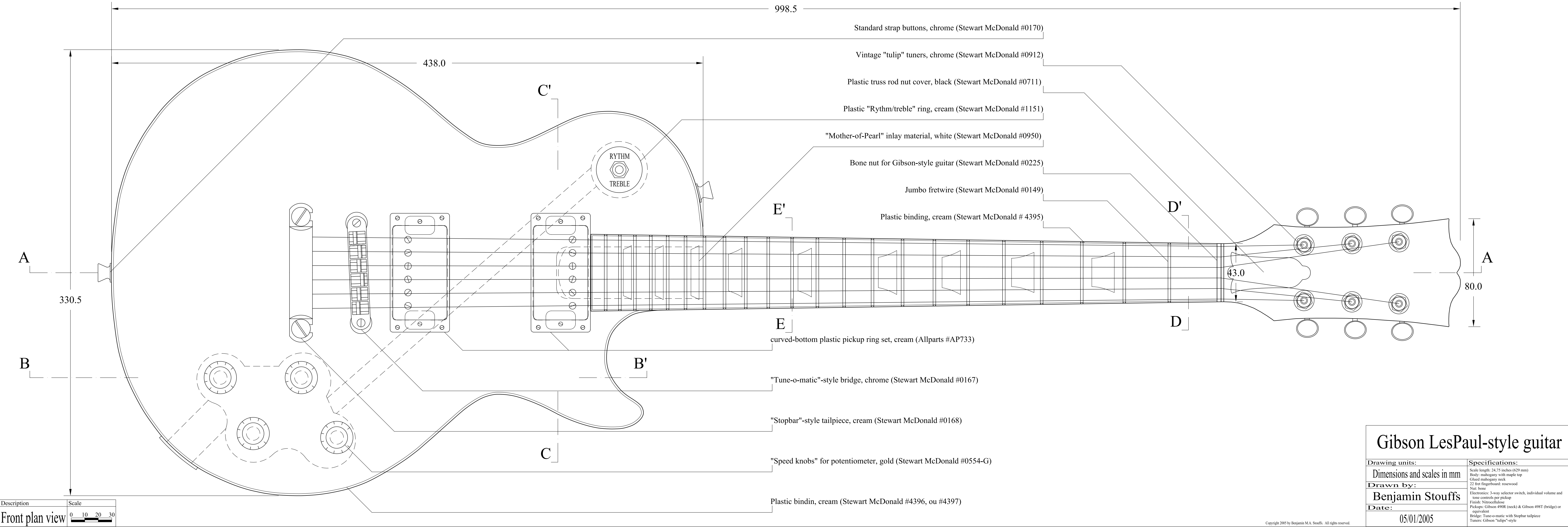


Section BB'

Description	Scale
0 10 20 30	

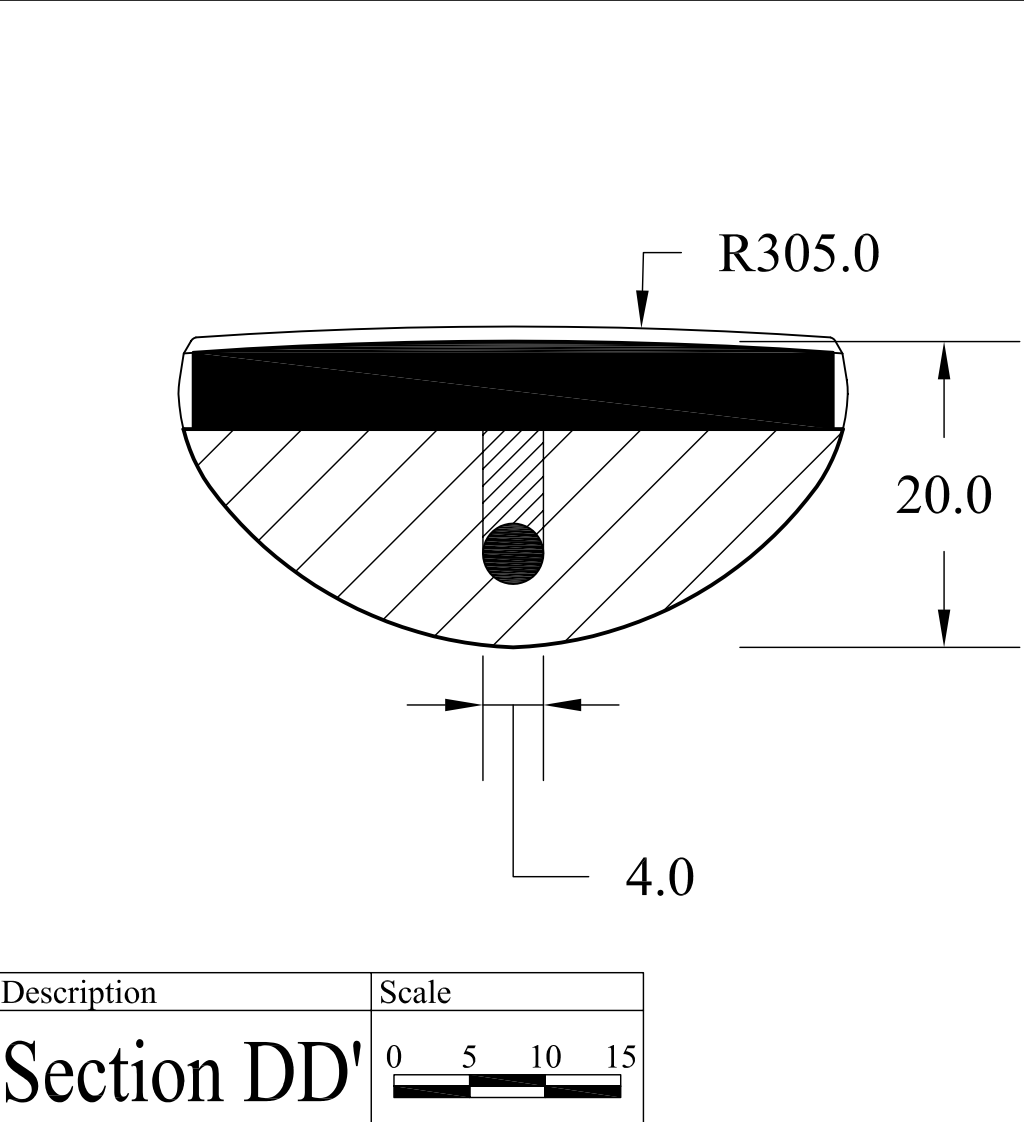
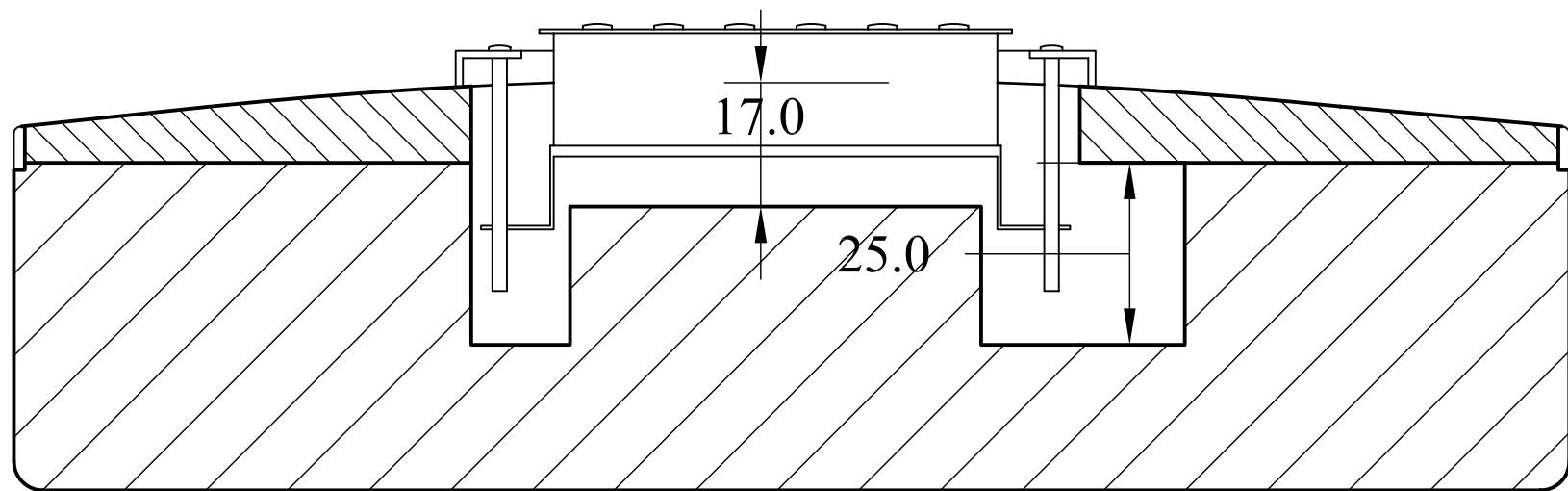
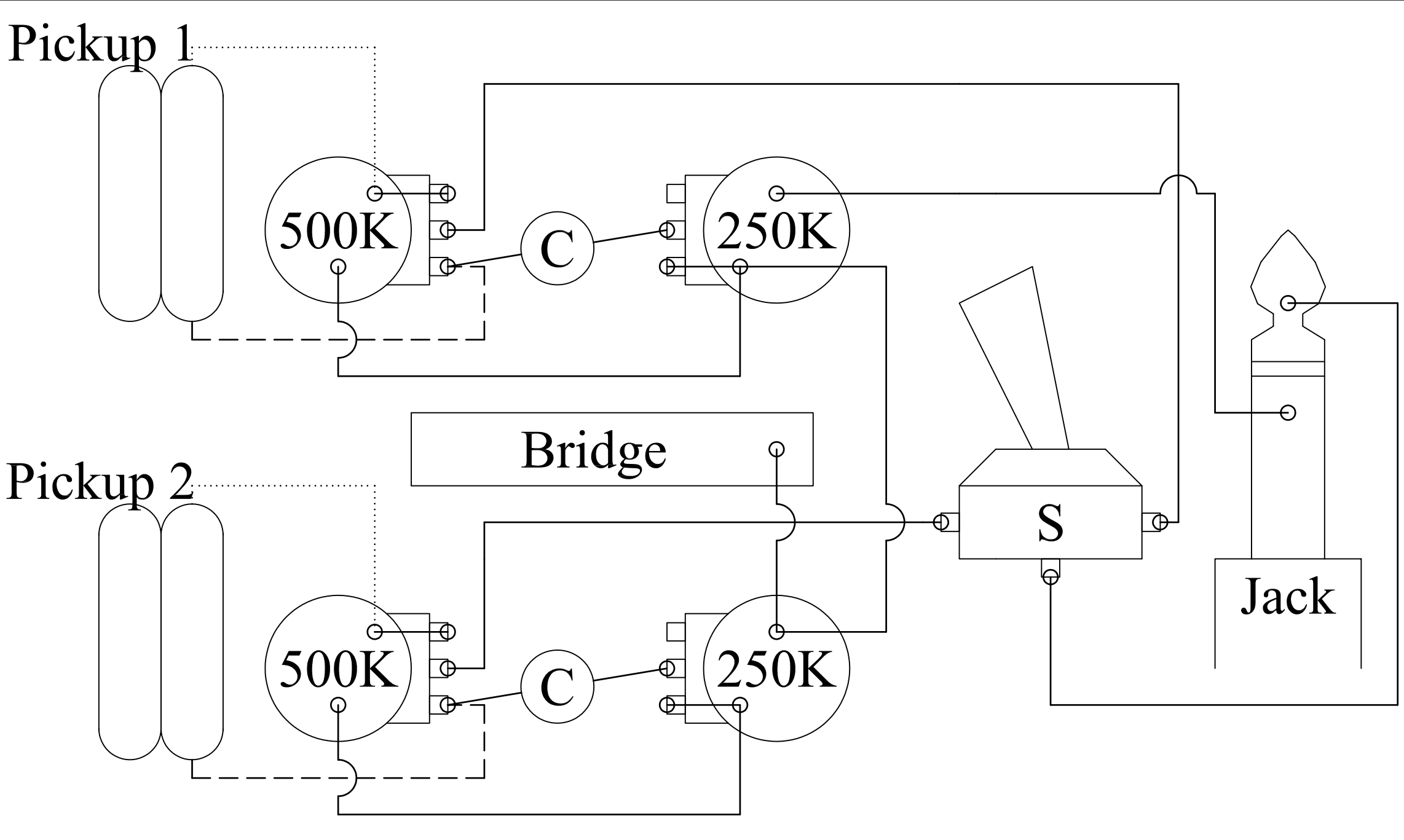


Section AA'

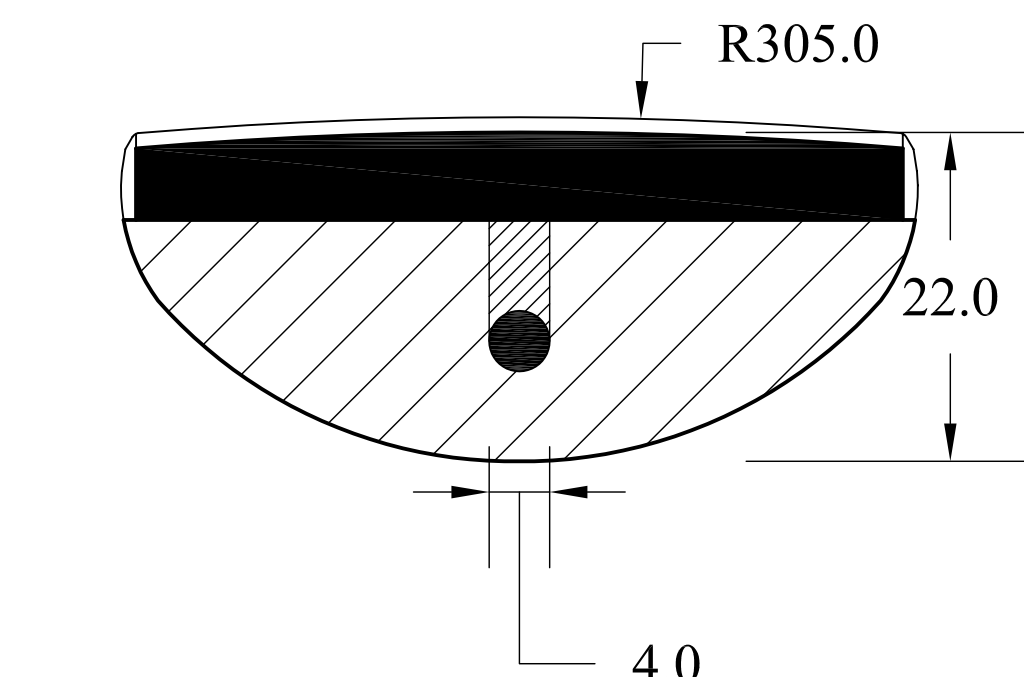


Front plan view

Description	Scale
0 10 20 30	



Section DD'



Section EE'

Description	Scale
0 5 10 15	

Gibson LesPaul-style guitar

Drawing units:	Specifications:
Dimensions and scales in mm	Scale length: 24.75 inches (629 mm)
Drawn by:	Body: mahogany with maple top
Benjamin Stouffs	Glued mahogany neck
Date:	27 fret fingerboard: rosewood
05/01/2005	Vibrato: Gibson "yair" style
	Electronics: 3-way selector switch, individual volume and tone controls per pickup
	Finish: Nitrocellulose
	Pickups: Gibson 490R (neck) & Gibson 490T (bridge) or equivalent
	Bridge: Tune-o-matic with Stopbar tailpiece
	Tuners: Gibson "tulip" style

