
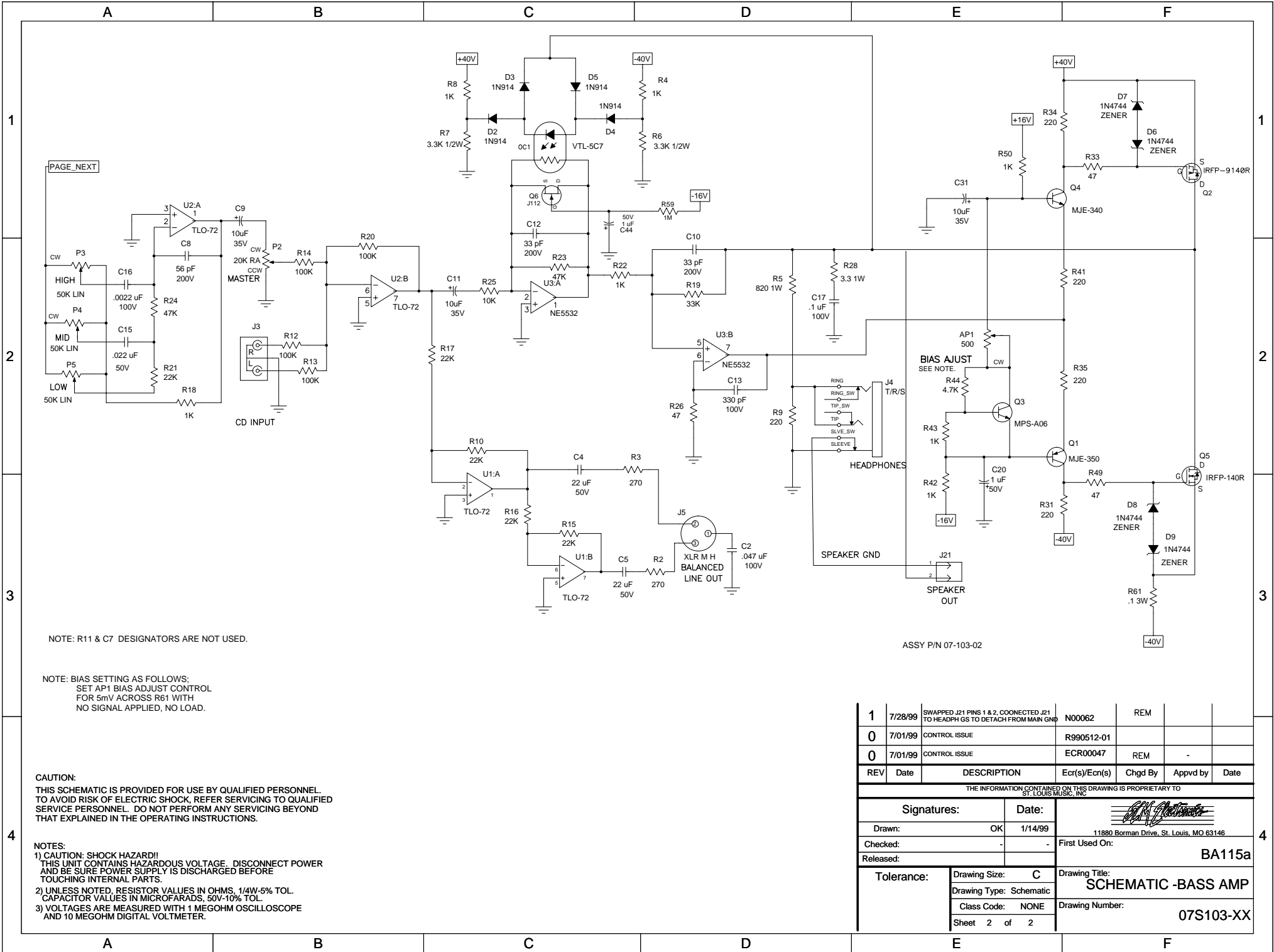



Power Table		
RefDes	-16V	+16V
IC1	4	8
IC2	4	8
U3	4	8
U4	4	8
U5	4	8

1	7/28/99	SWAPPED J21 PINS 1 & 2, COONNECTED J21 TO HEADPH GS TO DETACH FROM MAIN GND		N00062			
0	7/01/99	CONTROL ISSUE		R990512-01	REM		
0	7/01/99	CONTROL ISSUE		ECR00047	REM	-	
REV	Date	DESCRIPTION		Ecr(s)/Ecn(s)	Chgd By	Appvd by	Date
THE INFORMATION CONTAINED ON THIS DRAWING IS PROPRIETARY TO ST. LOUIS MUSIC, INC.							
Signatures:		Date:					
Drawn:		OK		11880 Borman Drive, St. Louis, MO 63146			
Checked:		-		First Used On:			
Released:				BA115a			
Tolerance:		Drawing Size: C		Drawing Title:			
		Drawing Type: Schematic		SCHEMATIC -BASS AMP			
		Class Code: NONE		Drawing Number:			
		Sheet 1 of 2		07S103-XX			

CAUTION:  
THIS SCHEMATIC IS PROVIDED FOR USE BY QUALIFIED PERSONNEL.  
TO AVOID RISK OF ELECTRIC SHOCK, REFER SERVICING TO QUALIFIED  
SERVICE PERSONNEL. DO NOT PERFORM ANY SERVICING BEYOND THAT  
EXPLAINED IN THE OPERATING INSTRUCTIONS.

- NOTES:
- 1) CAUTION: SHOCK HAZARD!!  
THIS UNIT CONTAINS HAZARDOUS VOLTAGE. DISCONNECT POWER  
AND BE SURE POWER SUPPLY IS DISCHARGED BEFORE  
TOUCHING INTERNAL PARTS.
  - 2) UNLESS NOTED, RESISTOR VALUES IN OHMS, 1/4W-5% TOL.  
CAPACITOR VALUES IN MICROFARADS, 50V-10% TOL.
  - 3) VOLTAGES ARE MEASURED WITH 1 MEGOHM OSCILLOSCOPE  
AND 10 MEGOHM DIGITAL VOLTMETER.



1	7/28/99	SWAPPED J21 PINS 1 & 2, COONNECTED J21 TO HEADPH GND TO DETACH FROM MAIN GND	N00062	REM		
0	7/01/99	CONTROL ISSUE	R990512-01			
0	7/01/99	CONTROL ISSUE	ECR00047	REM	-	
REV	Date	DESCRIPTION	Ecr(s)/Ecn(s)	Chgd By	Appvd by	Date
THE INFORMATION CONTAINED ON THIS DRAWING IS PROPRIETARY TO ST. LOUIS MUSIC, INC.						
Signatures:		Date:				
Drawn:	OK	1/14/99	11880 Borman Drive, St. Louis, MO 63146			
Checked:	-	-	First Used On:			
Released:			BA115a			
Tolerance:		Drawing Size: C	Drawing Title: SCHEMATIC -BASS AMP			
		Drawing Type: Schematic	Drawing Number: 07S103-XX			
		Class Code: NONE				
		Sheet 2 of 2				