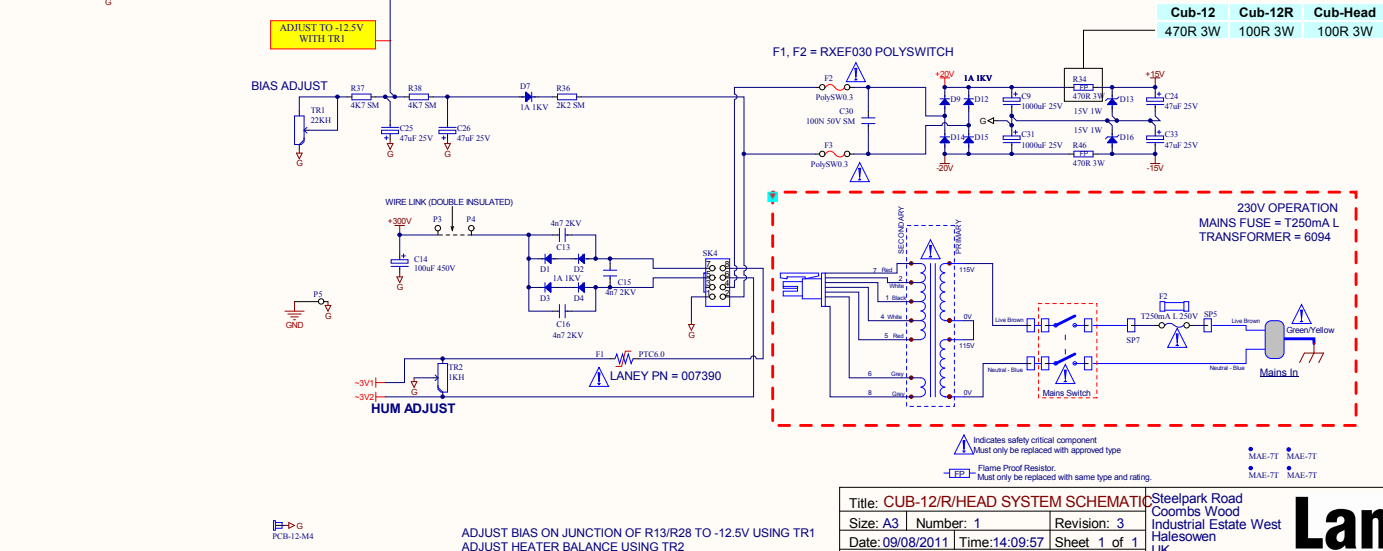
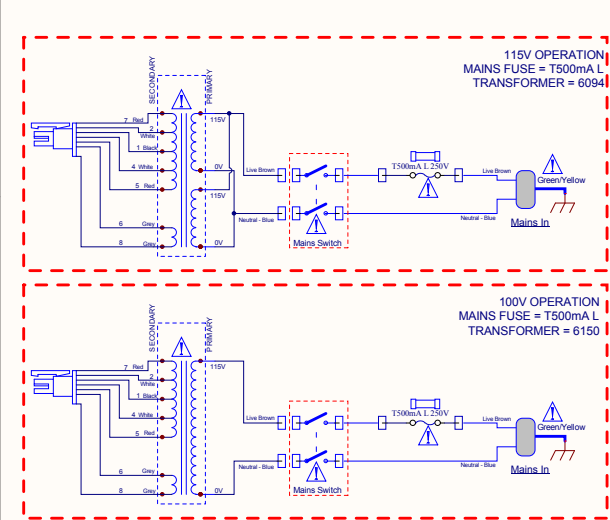
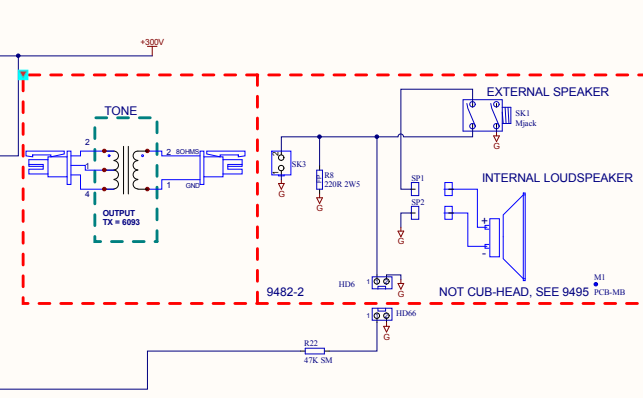
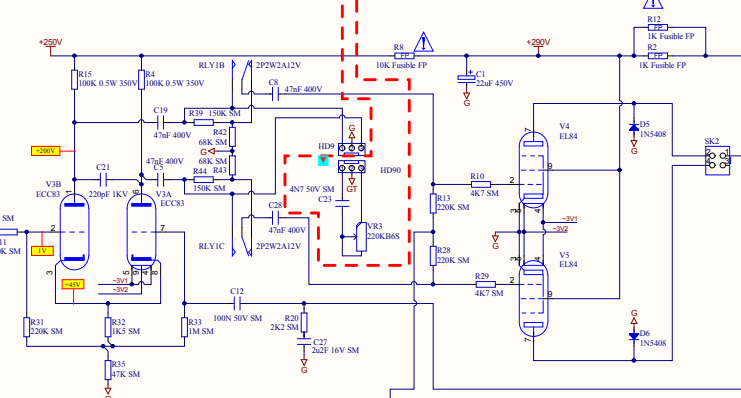
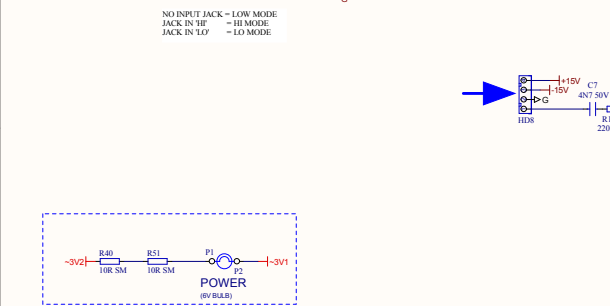
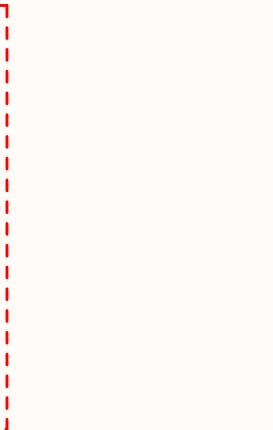
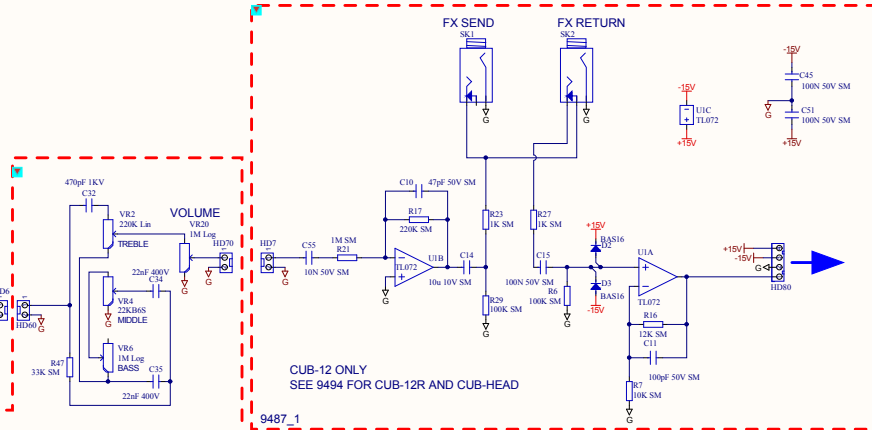
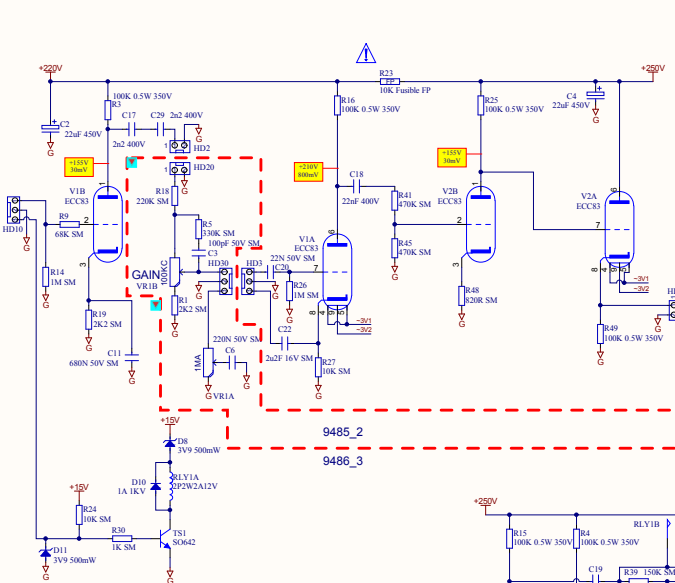
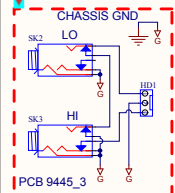


CUB-12

Service Information

Laney
POWER TO THE MUSIC
www.laney.co.uk

Input Sensitivity: Hi 500uV, Lo 1mV
Gain: EQ at 10, Volume at 5
Typical levels



CUB-12 SPARE PARTS LIST

Laney

Model No. CUB-12 (2010)				
SPARES ITEM	DESCRIPTION			ty. in Chassis Assy
Transformers	100V	6150 15W Tube Mains Transformer 100V	006150	1
	120V	6094 15W Tube Mains Transformer 115/230V	006094	1
	230V	6094 15W Tube Mains Transformer 115/230V	006094	1
	O/P	15W Tube Output Transformer	006093	1
Switch	Power	R13-428 DPST Toggle Switch	007658	1
	Lamp	Red Jewel Bulb Holder	007684	1
Wiring Looms	4 Way Ribbon Loom 150mm			007498
	3 Way Ribbon Cable 150mm			007706
	3 Way Screened Loom 300mm			007757
	3 Way Screened Loom 250mm			007978
	2 Way Screened Loom 250mm			007491
	2 Way Screened Loom 200mm			007518
	2 Way Screened Loom 125mm			007977
PCB s	9482 - Cub-Range 2010 Speaker Output PCB Complete			007687
	6.3 Horizontal Jack Socket-Mono			005002
	9445 - Dual Input Jack PCB Complete			007511
	6.3 Vert Phone Jack Stereo Gold Plated - Non Insulated Body			007591
	9485 - Cub-12 2009 Fascia Control PCB Complete			007763
	VR1	Gain 1M / 100K Antilog Dual 6mm Spline (A1M Front/C100K Back)	004116	1
	VR2	Treble 220K Lin Pot 6mm Spline	004065	1
	VR3	Tone 220K Lin Pot 6mm Spline	004065	1
		Bracket	005127	1
	VR4	Mid 22K Lin Pot 6mm Spline	004061	1
	VR6	Bass 1M Log Pot 6mm Spline	004070	1
	VR20	Volume 1M Log Pot 6mm Spline	004070	1
	9486 - Cub-12/R/Head 2010 Tube / PSU PCB Complete			007764
	1000uF 25V Radial Electrolytic Capacitor			002009
	100 F 450V Radial Electrolytic Capacitor			002030
	22 F 450V Radial Electrolytic Capacitor			007204
	220R 2.5W Cement Wire Wound Resistor			001501
	0.3A Poly Switch JK60-030			007603
	DPCO 2A 12V DC Relay Omron G5V-2-H1			007205
	9487 - Cub-12 2010 FX Loop PCB Complete			007765
	6.3mm Jack Socket Vertical (Mono, Gold, Insulated Body)			007374
Tubes Bases	Preamp	ECC83 Tube	005550	3
		B9A Valve Base PCB Mount	007531	3
	O/P	EL84 Tube	005563	2
		Octal Valve Base PCB Mount	007551	2
Cabinet	Cub-12/R 2010 Cabinet Minus Loudspeaker			007758
	Cub-12/R 2010 Covered Baffle			007759
	Medium White Chicken Head Knob (Spline)			007208
	Cub-12 2010 Painted Printed Fascia Metalwork			007760
	Rubber Handle Clips Assembly. Drg Ref: 4203			007693
	Cub-12/R 2010 Rear Grille. Drg Ref: 4248			007766
	Laney Badge (Plastic) (Standard Font) 116mm Drg Ref:4169			007725
	90 degree Plastic Corner (Front) 35mm			010052
	90 degree Plastic Corner (Rear) 35mm			010053
	Rocket 50 8 Ohm			51204
	38mm X 15mm Rubber Foot with Steel Insert			007473
	Cub-12/R 2010 Carton			007761
	Cub-12 2010 User Manual			007762