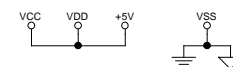
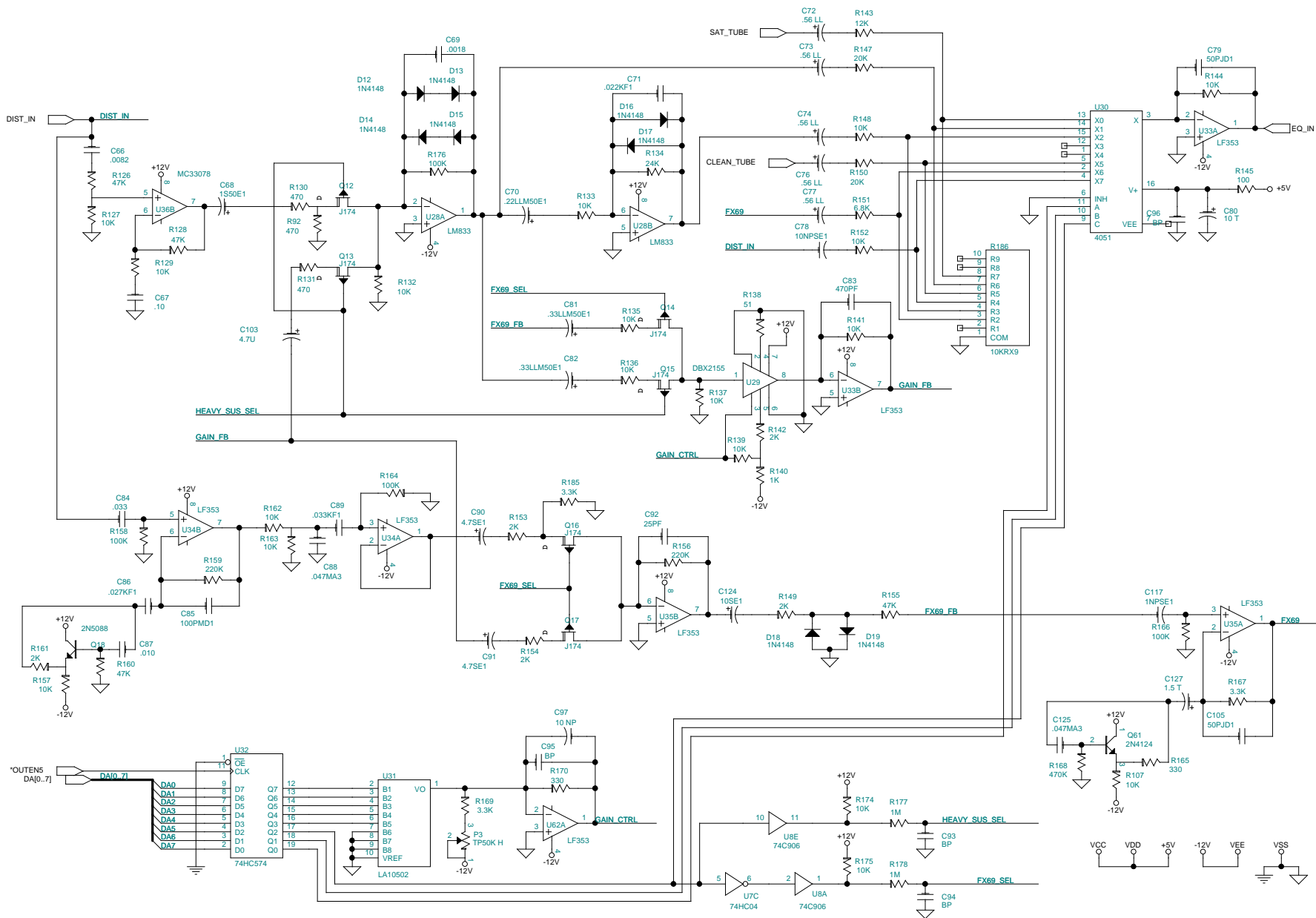


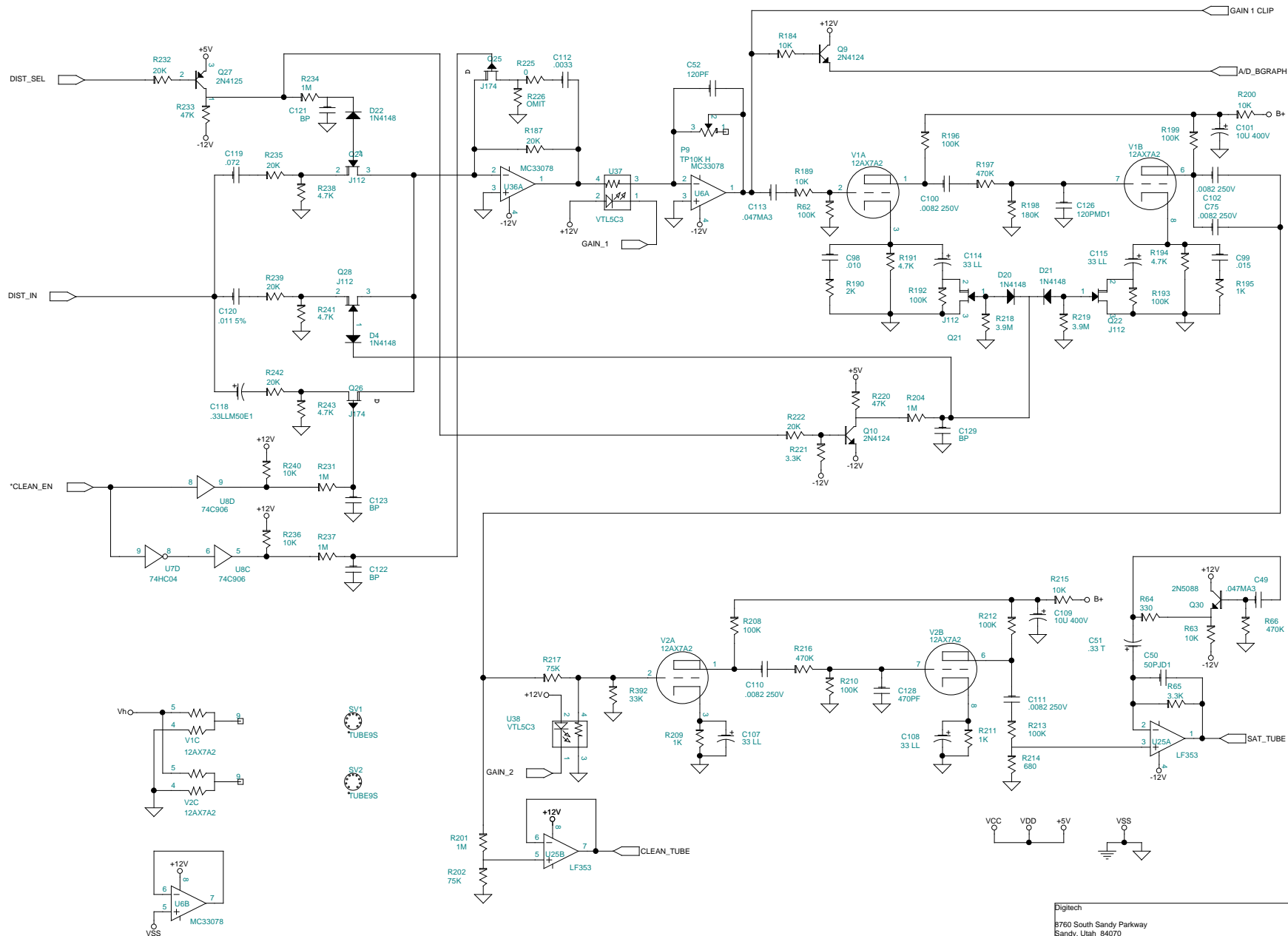
Digitech			
8760 South Sandy Parkway Sandy, Utah 84070			
Title			
GSP2101 ARTIST - A/D/A MAIN BOARD 80-5039			
Size	Document Number	Rev	
B	055039BD.002	BD	
Date:	Wednesday, April 05, 2000	Sheet	2 of 13



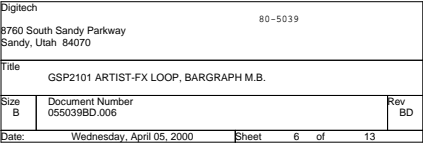
Digitel				
8760 South Sandy Parkway Sandy, Utah 84070				
Title GSP2101 ARTIST-COMPRESSOR MAIN BD 80-5039				
Size B	Document Number 0505039BD.003			Rev BD
Date:	Wednesday	April 05, 2000	Sheet	3 of 13

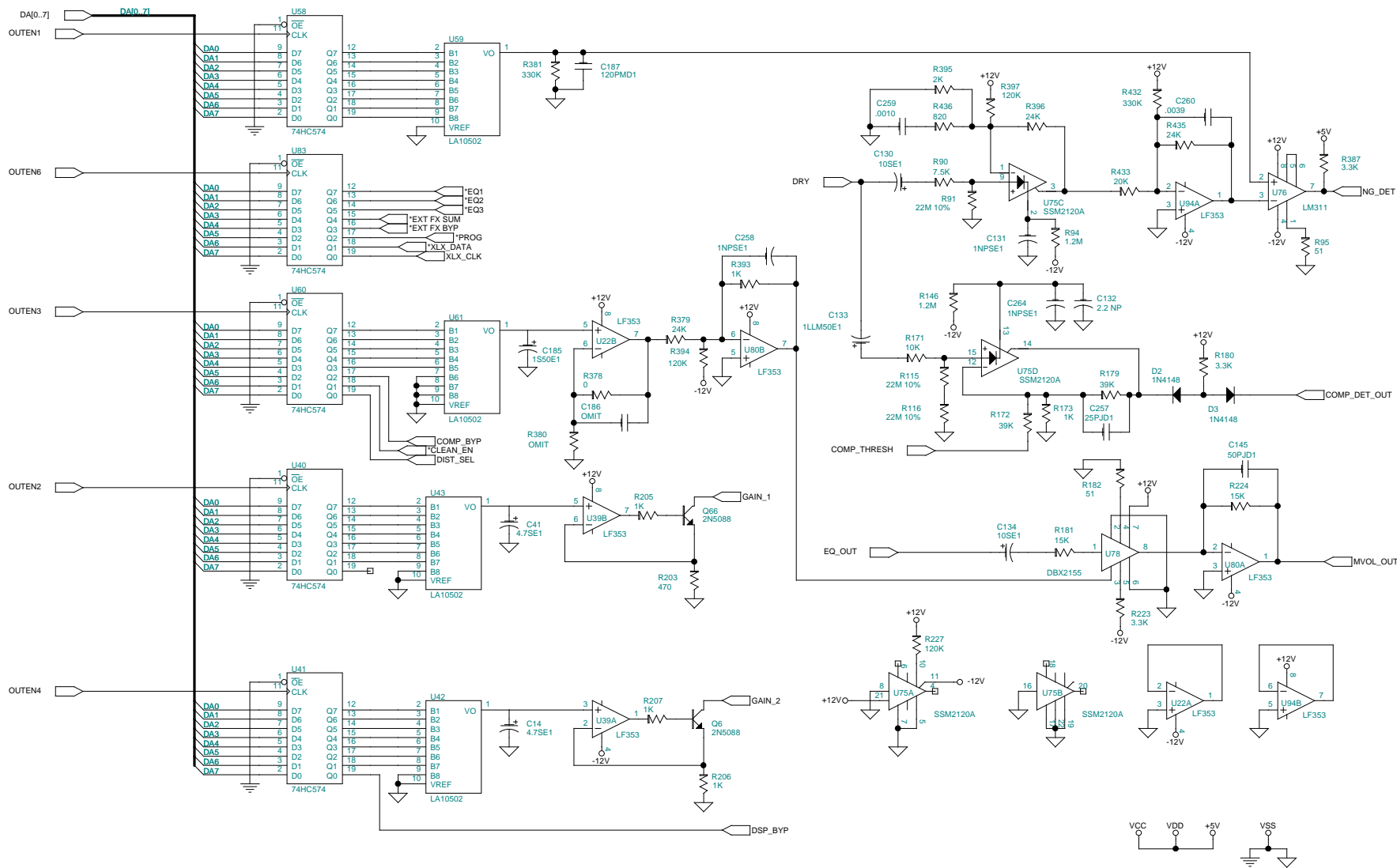


Digitech		
8760 South Sandy Parkway Sandy, Utah 84070		
Title		
GSP2101 ARTIST-DISTORTION MAIN BD 80-5039		
Size	Document Number	Rev
B	055039BD.004	BD
Date:	Wednesday, April 05, 2000	Sheet 4 of 13

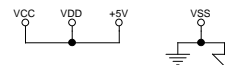
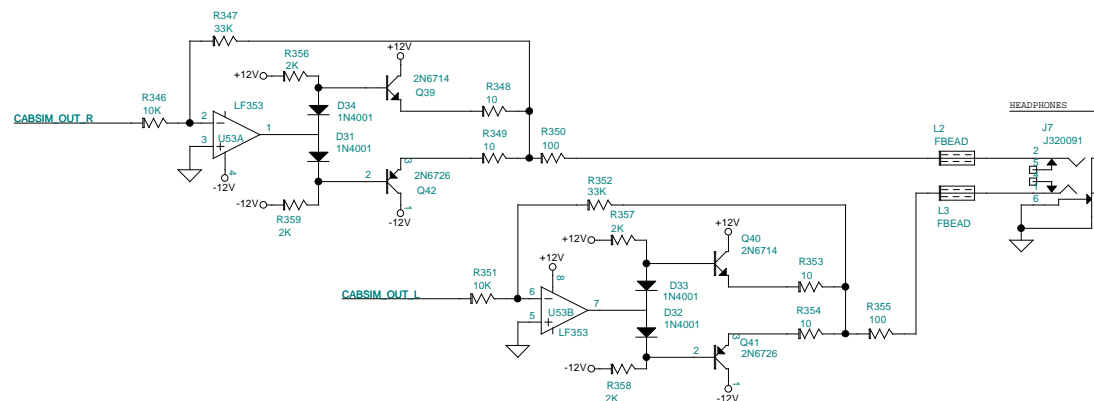


Digitech			
8760 South Sandy Parkway Sandy, Utah 84070			
Title			
GSP2101 ARTIST-TUBE DISTORTION M.B. 80-5039			
Size	Document Number	Rev	
B	055039BD.005	BD	
Date:	Wednesday, April 05, 2000	Sheet	5 of 13

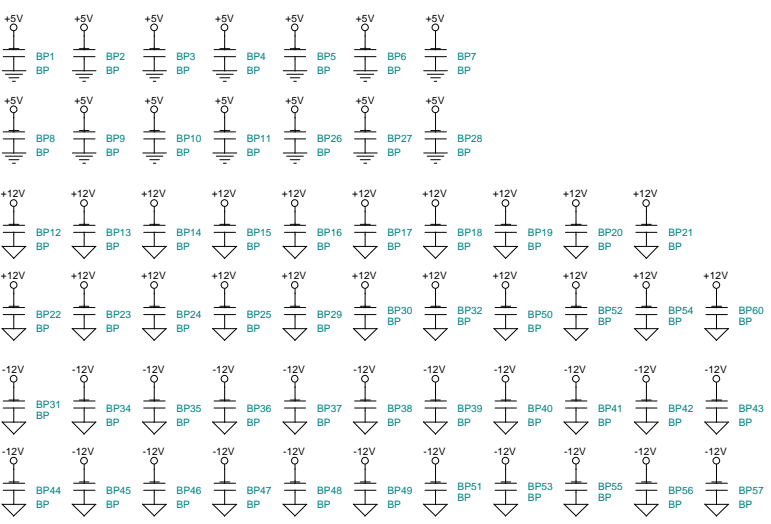
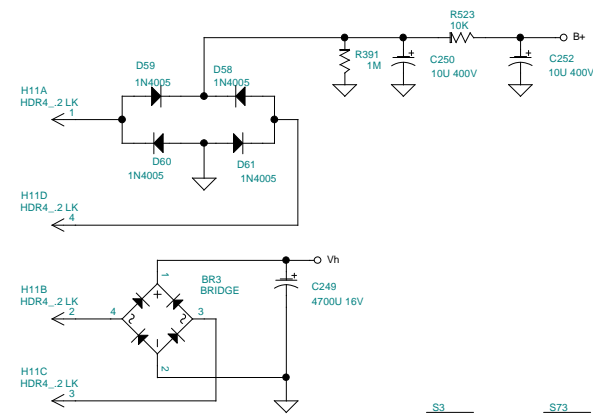
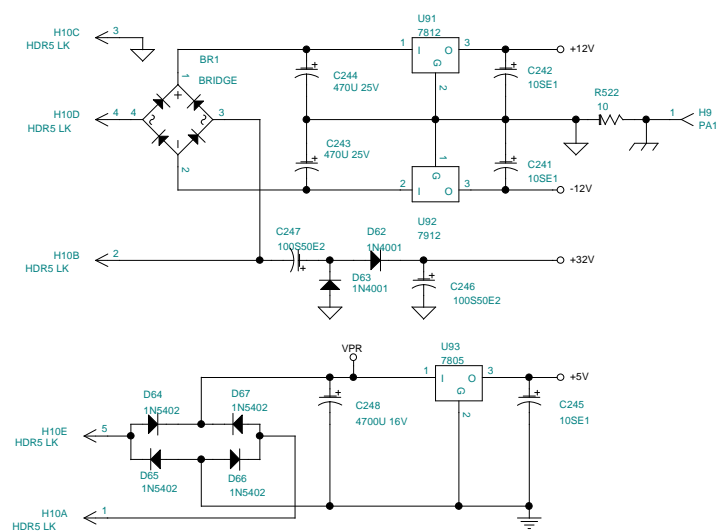




Digitech		
8760 South Sandy Parkway Sandy, Utah 84070		
Title		
GSP2101 ARTIST - DETECTORS, ANALOG CONTROL		
Size	Document Number	Rev
B	055039BD.007	BD
Date:	Wednesday, April 05, 2000	Sheet 7 of 13

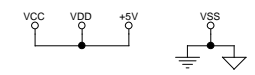


Digitelch				
8760 South Sandy Parkway Sandy, Utah 84070				
Title GSP2101 ARTIST - OUTPUTS MAIN BOARD 80-5039				
Size B	Document Number 055039BD.008			Rev B
Date:	Wednesday, April 05, 2000	Sheet	9 of	13



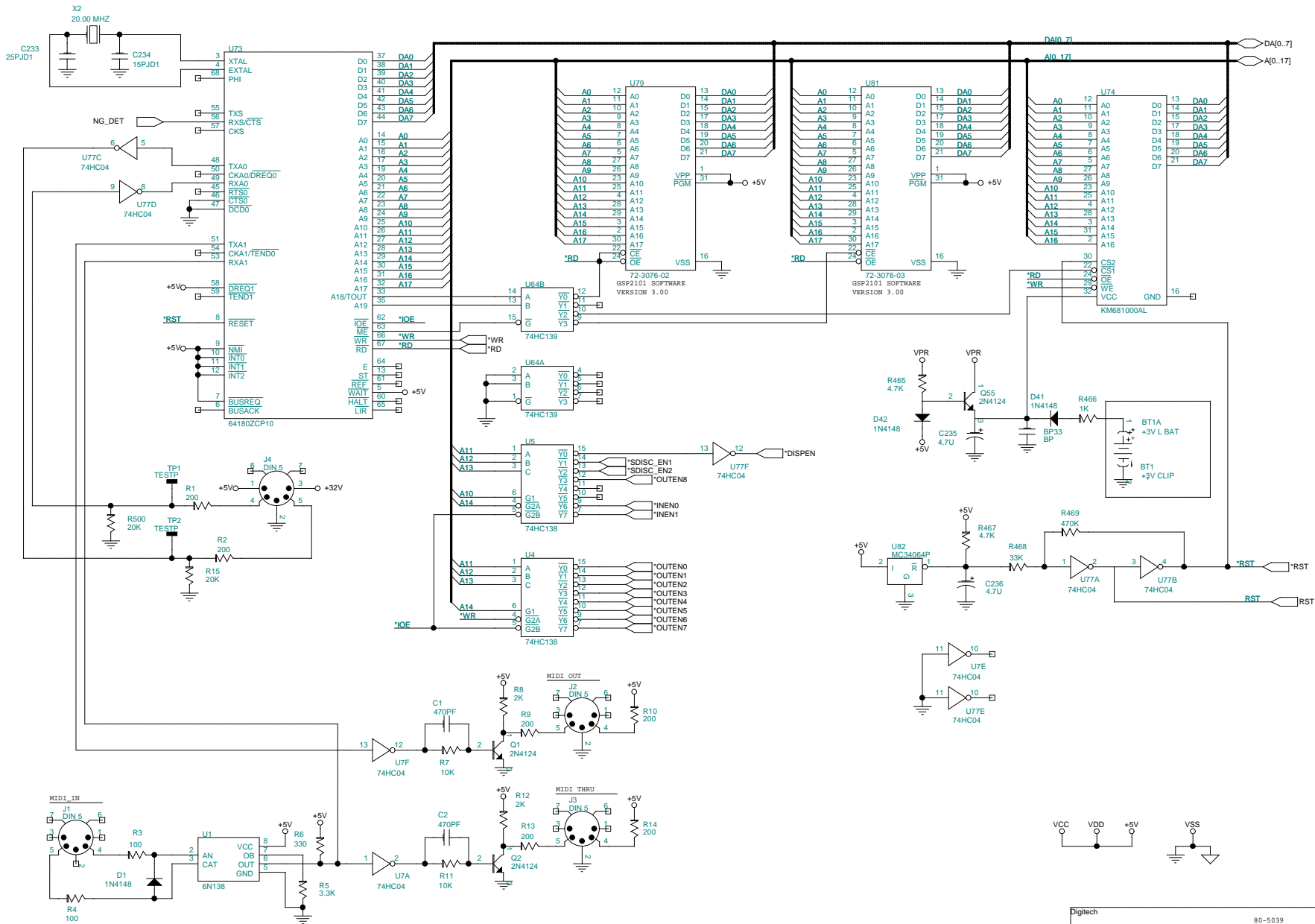
NOT USED
 BR2
 D5-11, 23-24
 D26-29, 37-38
 D55-57
 H13-88
 P5, 6
 Q38, 45-49
 Q51, 54
 R444-448, 455-458
 R463-464, 490-491
 R493-495
 R508-519

LAST REF.
 BP61
 BR3
 BT1
 C264
 D75
 H89
 J15
 P7
 Q66
 R523
 SW34
 T93
 U94
 V2
 X2

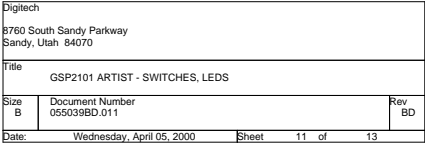


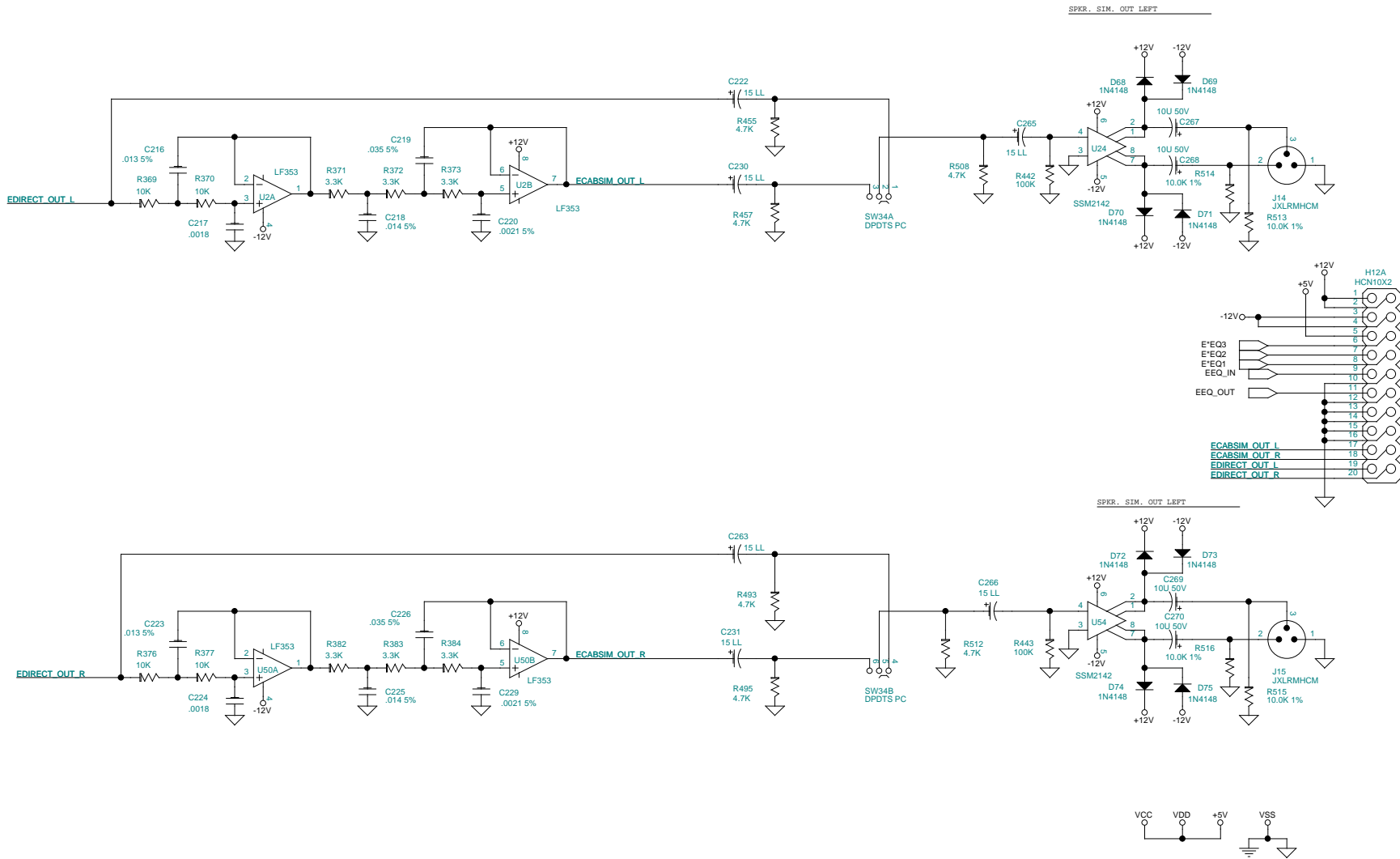
S3	S73	SS1	SS8
PLCC84S	PLCC68S	S250X250	S250X250
S10	S74	SS2	SS9
PLCC44S	DIP32S	S250X250	S250X250
S24	S75	SS3	SS10
DIP8S	DIP22S	S250X250	S250X250
S54	S79	SS4	SS11
DIP8S	DIP32S	S250X250	S187X687
S57	S81	SS5	SS12
DIP28AS	DIP32S	S250X250	S187X687
HS1	SR1	SS6	SS13
HS_1 TOP	SR6-32_2	S250X250	S187X687
HS2	SR2	SS7	SS14
HS_L BASE	SR6-32_2	S250X250	S187X687
I1	SR3	SS8	
INS_3TO220	SR6-32_1		
PCB1	SR4		
80-5039-B	SR6-32_1		

Digitech		80-5039	
8760 South Sandy Parkway Sandy, Utah 84070			
Title GSP2101 ARTIST - POWER SUPPLY MAIN BOARD			
Size B	Document Number 055039BD.009	Rev BD	
Date:	Wednesday, April 05, 2000	Sheet	9 of 13



Digitech		80-5039	
8760 South Sandy Parkway Sandy, Utah 84070			
Title GSP2101 ARTIST - MICROPROCESSOR, MEMORY			
Size B	Document Number 055039BD.010		Rev BD
Date:	Wednesday, April 05, 2000	Sheet	10 of 13





Digittech		
8760 South Sandy Parkway Sandy, Utah 84070		
Title		
GSP2101 ARTIST - SPEAKER SIM.		
Size	Document Number	Rev
B	055039BD.013	BD
Date:	Wednesday, April 05, 2000	Sheet 13 of 13

&l0 (s0P (s15H (s8V (s0S &l6D &l66P &l3E &a7L &a120M &l61FDOD Software

Page 1

GSP2101 ARTIST MAIN BOARD 80-5039 Revised: April 29, 1996
 055039BD.000 Revision: BD
 Bill Of Materials May 8, 1996 10:57:11
 Quan Reference Part SYMAN Description

74	BP1,BP2,BP3,BP4,BP5,BP6, BP7,BP8,BP9,BP10,BP11, BP12,BP13,BP14,BP15,BP16, BP17,BP18,BP19,BP20,BP21, BP22,BP23,BP24,BP25,BP26, BP27,BP28,BP29,BP30,BP31, BP32,BP33,BP34,BP35,BP36, BP37,BP38,BP39,BP40,BP41, BP42,C42,BP43,C43,BP44, BP45,C45,BP46,C46,BP47, BP48,BP49,BP50,BP51,BP52, BP53,BP54,BP55,BP56,BP57, BP60,C61,C62,C93,C94,C95, C96,C121,C122,C123,C129, C170,C171	BP	62-0067	0.047 uF Cap	50V	20%	Axial Monolithic
2	BR1,BR3	BRIDGE	70-0129	Bridge Rectifer			
1	BT1	+3V CLIP	24-1014	Holder For 3V Battery			
1	BT1A	+3V L BAT	24-1016	3V Battery, Lithium, Eveready Part #CR2032			
4	C1,C2,C83,C128	470PF	62-0003	470 pF Cap	50V	20%	Ceramic Disc
12	C3,C4,C5,C16,C29,C65, C174,C176,C210,C213,C233, C257	25PJD1	62-0001	25 pF Cap	50V	5%	Ceramic Disc T&R
13	C6,C8,C15,C18,C20,C44, C47,C48,C135,C137,C139, C140,C142	47SE	60-0054-01	47 uF Cap	16V	-20/+20%	Elect., C&F
13	C7,C9,C17,C19,C21,C24, C40,C49,C54,C88,C113, C125,C207	.047MA3	62-0067	0.047 uF Cap	50V	20%	Axial Monolithic
7	C10,C11,C12,C13,C30,C31, C80	10 T	62-0163	10 uF Cap	16V	10%	Tantalum T&R
7	C14,C25,C26,C41,C90,C91, C238	4.7SE1	60-0048-01	4.7 uF Cap	16V	-20/+20%	Elect., T&R
2	C22,C23	240PMD1	62-0010	240 pF Cap	50V	20%	Ceramic Disc T&R
2	C27,C39	.0013 5%	56-1148	.0013 uF Cap	100V	5%	Poly Film
2	C28,C33	68PJD1	62-0018	68 pF Cap	50V	5%	Ceramic Disc T&R
2	C32,C38	680PF	62-0004	680 pF Cap	50V	20%	Ceramic Disc
4	C34,C35,C36,C37	.0045 5%	56-1115	.0045 uF Cap	100V	5%	Poly Film
8	C50,C56,C58,C79,C105, C145,C251,C256	50PJD1	62-0008	50 pF Cap	50V	5%	Ceramic Disc T&R
1	C51	.33 T	62-0160	.33 uF Cap	35V	10%	Tantalum
2	C52,C169	120PF	62-0002	120 pF Cap	50V	10%	Ceramic Disc
7	C53,C126,C136,C138,C141, C180,C187	120PMD1	62-0002	120 pF Cap	50V	10%	Ceramic Disc
11	C55,C60,C78,C104,C167, C168,C206,C208,C211,C214, C237	10NPSE1	60-0051-01	10 uF Cap	16V	-20/+20%	Elect., NP T&R
4	C57,C64,C97,C201	10 NP	60-0051-01	10 uF Cap	16V	-20/+20%	Elect., NP
6	C59,C63,C158,C188,C204, C205	.0017 5%	56-1211	.0017 uF Cap	100V	5%	Poly Film
1	C66	.0082	56-2019	.0082 uF Cap	100V	10%	Poly Film
1	C67	.10	56-2035	.10 uF Cap	100V	10%	Poly Film
2	C68,C185	1S50E1	60-0044-01	1.0 uF Cap	50V	-20/+20%	Elect., T&R C&F

DOD Software

GSP2101 ARTIST MAIN BOARD 80-5039 Revised: April 29, 1996
 055039BD.000 Revision: BD
 Bill Of Materials May 8, 1996 10:57:11

Page

Quan Reference		Part	SYMAN	Description		055039bd.pls	
3	C69,C217,C224	.0018	56-2011	.0018	uF Cap 100V	10%	Poly Film
1	C70	.22LLM50E1	60-0039-01	.22	uF Cap 16V	-20/+20%	Elect, LL-D T&R
1	C71	.022KF1	56-2025	.022	uF Cap 100V	10%	Poly Film T&R
5	C72,C73,C74,C76,C77	.56 LL	60-0041-01	.56	uF Cap 50V	-20/+20%	Elect, LL T&R
5	C75,C100,C102,C110,C111	.0082 250V	56-2219	.0082	uF Cap 250V	10%	Poly Film
3	C81,C82,C118	.33LLM50E1	60-0061-01	.33	uF Cap 50V	20%	Elect, LL T&R
1	C84	.033	56-2027	.033	uF Cap 100V	10%	Poly Film
1	C85	100PMD1	62-0020	100	pF Cap 50V	20%	Ceramic Disc T&R
1	C86	.027KF1	56-2026	.027	uF Cap 100V	10%	Poly Film T&R
2	C87,C98	.010	56-2022	.010	uF Cap 100V	10%	Poly Film
1	C89	.033KF1	56-2027	.033	uF Cap 100V	10%	Poly Film T&R
1	C92	25PF	62-0001	25	pF Cap 50V	5%	Ceramic Disc
3	C99,C152,C175	.015	56-2023	.015	uF Cap 100V	10%	Poly Film
4	C101,C109,C250,C252	10U 400V	60-0310	10	uF Cap 400V	-20/+80%	Elect
3	C103,C235,C236	4.7U	60-0048-01	4.7	uF Cap 16V	-20/+20%	Elect.
1	C106	820PMD1	62-0005	820	pF Cap 50V	20%	Ceramic Disc T&R
4	C107,C108,C114,C115	33 LL	60-0059-01	33	uF Cap 16V	20%	Elect., LL
1	C112	.0033	56-2014	.0033	uF Cap 100V	10%	Poly Film
7	C117,C131,C197,C209,C212,C258,C264	1NPSE1	60-0046-01	1.0	uF Cap 16V	-20/+20%	Elect., N.P. T&R
1	C119	.072	56-2031	.072	uF Cap 100V	10%	Poly Film
1	C120	.011 5%	56-1119	.011	uF Cap 100V	5%	Poly Film
9	C124,C130,C134,C177,C178,C215,C241,C242,C245	10SE1	60-0049-01	10	uF Cap 16V	-20/+20%	Elect.,-D T&R
1	C127	1.5 T	62-0164	1.5	uF Cap 25V	20%	Tantalum T&R
1	C132	2.2 NP	60-0043	2.2	uF Cap 25V	-20/+80%	Elect., NP
5	C133,C143,C164,C165,C172	1LLM50E1	60-0045-01	1.0	uF Cap 50V	20%	Elect., LL T&R
2	C149,C163	.15 5%	56-1223	.15	uF Cap 100V	5%	Poly Film
2	C150,C166	.027 5%	56-1219	.027	uF Cap 100V	5%	Poly Film
2	C151,C173	.22 5%	56-1132	.22	uF Cap 100V	5%	Poly Film
2	C153,C179	.16 3%	56-0093	.16	uF Cap 100V	3%	Poly Film
2	C154,C181	.0072 5%	56-1117	.0072	uF Cap 100V	5%	Poly Film
2	C155,C182	.022 5%	56-1122	.022	uF Cap 100V	5%	Poly Film
2	C156,C183	.0035 5%	56-1114	.0035	uF Cap 100V	5%	Poly Film
2	C157,C184	.039 3%	56-0107	.039	uF Cap 100V	3%	Poly Film
2	C159,C189	.020 3%	56-0084	.020	uF Cap 100V	3%	Poly Film
2	C160,C190	.0008 3%	56-0070	.0008	uF Cap 100V	3%	Poly Film
4	C161,C191,C216,C223	.013 5%	56-1143	.013	uF Cap 100V	5%	Poly Film
2	C192,C199	.0016 3%	56-0073	.0016	uF Cap 100V	3%	PET Film
2	C193,C200	.0029 3%	56-0104	.0029	uF Cap 100V	3%	Poly Film
2	C195,C202	.0064 3%	56-0079	.0064	uF Cap 100V	3%	Poly Film
2	C196,C203	150PMD1	62-0031	150	pF Cap 50V	20%	Ceramic Disc T&R
1	C198	1 NP	60-0046-01	1.0	uF Cap 16V	-20/+20%	Elect., N.P.
2	C218,C225	.014 5%	56-1120	.014	uF Cap 100V	5%	Poly Film
2	C219,C226	.035 5%	56-1124	.035	uF Cap 100V	5%	Poly Film
2	C220,C229	.0021 5%	56-1147	.0021	uF Cap 100V	5%	Poly Film
6	C222,C230,C231,C263,C265,C266	15 LL	60-0052-01	15	uF Cap 16V	20%	Elect., LL
2	C227,C228	240PF	62-0010	240	pF Cap 50V	20%	Ceramic Disc
2	C232,C253	.47 5%	56-1227	.47	uF Cap 100V	5%	Poly Film
1	C234	15PJD1	62-0007	15	pF Cap 50V	5%	Ceramic Disc T&R
2	C239,C254	.10 3%	56-0091	.10	uF Cap 100V	3%	Poly Film
DOD Software							
GSP2101 ARTIST MAIN BOARD		80-5039	Revised:		April 29, 1996		
055039BD.000			Revision:		BD		
Bill Of Materials		May 8, 1996	10:57:11				
Quan	Reference	Part	SYMAN	Description			
2	C240,C255	.056 5%	56-1126	.056	uF Cap 100V	5%	Poly Film
2	C243,C244	470U 25V	60-0058	470	uF Cap 25V	-20/+20%	Elect

Page

2	C246,C247	100S50E2	60-1013	100	uF Cap	50V -20/+80%	Elect-AMMO
2	C248,C249	4700U 16V	60-0062	4700	uF Cap	16V -20/+20%	Elect
1	C259	.0010	56-2008	.0010	uF Cap	100V 10%	Poly Film PET
1	C260	.0039	56-2015	.0039	uF Cap	100V 10%	Poly Film
1	C261	180PF	62-0021	180	pF Cap	50V 20%	Ceramic Disc
1	C262	180PMD1	62-0021	180	pF Cap	50V 20%	Ceramic Disc T&R
4	C267,C268,C269,C270	10U 50V	60-0090	10	uF Cap	50V -20/+80%	Elect
31	D1,D2,D3,D4,D12,D13,D14, D15,D16,D17,D18,D19,D20, D21,D22,D25,D30,D35,D36, D39,D40,D41,D42,D68,D69, D70,D71,D72,D73,D74,D75	1N4148	70-0002	1N4148	Diode Silicon Switching,	75 Volts PIV	
6	D31,D32,D33,D34,D62,D63	1N4001	70-0001	1N4001	Silicon Rectifier, 1 Amp, 50 Volts PIV		
5	D43,D44,D52,D53,D54	LEDG702114	70-2114	Green	Light Emitting Diode, T1 Ammo		
7	D45,D46,D47,D48,D49,D50, D51	LEDR702113	70-2113	Red	Light Emitting Diode, T1 Ammo		
4	D58,D59,D60,D61	1N4005	70-0008	1N4005	Silicon Rectifier		
4	D64,D65,D66,D67	1N5402	70-0100	1N5402	Silicon Rectifier, 3Amp, 200 PIV		
2	H1,H11	HDR4_.2 LK	32-1047	4	Pin Header, 0.2" spacing, Locking		
3	H2,H5,H7	HDR321074	32-1074	5	Pin Header, 0.1" spacing, 0.025" sq pins, .457" tall		
5	H2A,H5A,H6,H6A,H7A	PA5	00-0000	5	Pin Pad Pattern, Not a part		
2	H3,H3A	HDR10X2	32-1055	20	Pin Hdr, 10X2, 0.1" spacing, 0.025 pins		
1	H4	HDR15X2	32-1058	30	Pin Hdr, 15x2, 0.1" spacing, 0.025 pins		
1	H6B	RCSF5_2	32-1185	5	Pin Ribbon Cable Flex, 0.1" spacing, 2.00" Length, Open end		
1	H8	WTCN 5	32-1163	5	Circuit Wire Trap Connector, 2mm Pitch		
1	H8A	RC2_5_5	32-1201	5	Pin Ribbon Cable, 2mm spacing, 5.00" Length		
1	H10	HDR5 LK	32-1071	5	Pin Header, 0.1" spacing, 0.025" sq pins Lockin		
1	H12	HDR10X2L3	32-1082	20	Pin Hdr, 10x2, 0.1" spacing, 0.500 pins		
1	H12A	HCN10X2	32-1169	20	Pin Header Conn, 10x2		
1	H89	HDR14+	32-1068	14	Pin Header, 0.1" spacing, 0.025" sq pins, Right Angle		
1	HS1	HS_1 TOP	70-4204	Heatsink, 3 Regulator, Top			
1	HS2	HS_L BASE	70-4205	Heatsink, L-Shape Base			
1	I1	INS_3TO220	70-4209	Insulator, 3 Regulator Heatsink			
4	J1,J2,J3,J4	DIN 5	32-0092	5	Pin DIN Jack		
8	J5,J6,J7,J8,J9,J10,J11, J12	J320091	32-0091	1/4	Phone Jack, PCB Mount		
1	J13	COAX 8.5	36-0035	8.5"	Coax Cable		
2	J14,J15	JXLRMHCM	32-0198	XLR Male, Jack Hor, Chas/PCB Mount			
9	L1,L2,L3,L4,L5,L6,L7,L8, L9	FBEAD	26-0221	Ferrite Bead w/axial lead			
1	P1	TP100K HC	42-0235	100	K Trim Pot, Horizontal Cermet		
2	P2,P9	TP10K H	42-0211	10	K Trim Pot, Horizontal Mount, 3/4 turn		
1	P3	TP50K H	42-0222	50	K Trim Pot, Vertical Mount, 3/4 turn		
1	P4	TP5K H	42-0219	5	K Trim Pot, Horizontal Mount, 10mm		
1	P7	P100K W X2	40-2011	100	K "W" 16mm, Rot Pot x2, Rack Leads		
6	PA1,PA2,PA4,PA5,PA6,H9	PA1	00-0000	1	Pin Pad Pattern, Not a part		
1	PCB1	80-5039-B	80-5039-B	GSP2101	MAIN PCB RAW W/BRKAWAYS		
25	Q1,Q2,Q3,Q4,Q5,Q9,Q10, Q11,Q19,Q20,Q23,Q31,Q36, Q37,Q55,Q56,Q57,Q58,Q59,	2N4124	70-1009	2N4124	NPN, Gen. Purp. Amplifier/Switching Xstr T&R		

DOD Software

GSP2101 ARTIST MAIN BOARD 80-5039

Revised: April 29, 1996

Page

055039BD.000

Revision: BD

Bill Of Materials

May 8, 1996 10:57:11

Quan Reference

Part

SYMAN

Description

4	Q60,Q61,Q62,Q63,Q64,Q65						
10	Q6,Q18,Q30,Q66	2N5088	70-1007	2N5088	NPN, Transistor, T&R		
10	Q7,Q8,Q12,Q13,Q14,Q15, Q16,Q17,Q25,Q26	J174	70-1013	J174	JFET, P-Channel		
10	Q21,Q22,Q24,Q28,Q32,Q34, Q43,Q44,Q50,Q52	J112	70-1012	J112A	JFET, National Only		
5	Q27,Q29,Q33,Q35,Q53	2N4125	70-1008	2N4125	PNP, Gen. Purp. Amplifier/Switching Xstr		

2	Q39,Q40	2N6714	70-1155	2N6714	NPN, Transistor				
2	Q41,Q42	2N6726	70-1156	2N6726	PNP, Transistor				
1	QT1	QTPC110	32-2088		Quick-tab, .110 x .032, PC Mount				
20	R1,R2,R9,R10,R13,R14,R22, R23,R32,R33,R57,R58,R476, R477,R478,R479,R480,R481, R482,R483	200	50-0004	200	Ohm Resistor	5%	1/4	Watt	Carbon Film
7	R3,R4,R16,R60,R145,R350, R355	100	50-0003	100	Ohm Resistor	5%	1/4	Watt	Carbon Film
23	R5,R65,R80,R98,R102,R113, R167,R169,R180,R185,R221, R223,R371,R372,R373,R382, R383,R384,R387,R497,R498, R499,R501	3.3K	50-0014	3.3	KOhm Resistor	5%	1/4	Watt	Carbon Film
5	R6,R64,R117,R165,R170	330	50-0005	330	Ohm Resistor	5%	1/4	Watt	Carbon Film
94	R7,R11,R29,R35,R36,R37, R44,R45,R47,R48,R49,R52, R53,R63,R69,R70,R71,R72, R75,R77,R78,R81,R82,R83, R85,R87,R106,R107,R127, R129,R132,R133,R135,R136, R137,R139,R141,R144,R148, R152,R157,R162,R163,R171, R174,R175,R184,R189,R200, R215,R236,R240,R247,R249, R252,R253,R304,R308,R327, R329,R332,R333,R346,R351, R369,R370,R376,R377,R398, R399,R400,R409,R410,R411, R419,R422,R426,R429,R430, R459,R460,R470,R471,R472, R473,R474,R475,R485,R486, R487,R488,R492,R521,R523	10K	50-0020	10	KOhm Resistor	5%	1/4	Watt	Carbon Film
17	R8,R12,R40,R42,R114,R118, R142,R149,R153,R154,R161, R190,R356,R357,R358,R359, R395	2K	50-0013	2	KOhm Resistor	5%	1/4	Watt	Carbon Film
26	R15,R17,R18,R19,R73,R74, R76,R84,R86,R93,R147, R150,R187,R222,R232,R235, R239,R242,R303,R305,R312, R315,R326,R345,R433,R500	20K	50-0023	20	KOhm Resistor	5%	1/4	Watt	Carbon Film
24	R20,R38,R39,R55,R56,R191, R194,R238,R241,R243,R251, R328,R334,R362,R366,R455,	4.7K	50-0015	4.7	KOhm Resistor	5%	1/4	Watt	Carbon Film

DOD Software

GSP2101 ARTIST MAIN BOARD 80-5039

055039BD.000

Bill Of Materials

Quan Reference

May 8, 1996

Part

Revised: April 29, 1996

Revision: BD

10:57:11

SYMAN

Description

Page

17	R457,R465,R467,R489,R493, R495,R508,R512 R21,R88,R89,R105,R120, R123,R177,R178,R201,R204, R231,R234,R237,R300,R339, R360,R391	1M	50-0045	1	MOhm Resistor	5%	1/4	Watt	Carbon Film
15	R24,R30,R31,R34,R46,R54, R59,R348,R349,R353,R354, R390,R484,R520,R522	10	50-0001	10	Ohm Resistor	5%	1/4	Watt	Carbon Film
20	R25,R26,R27,R28,R50,R51, R96,R140,R173,R195,R205, R206,R207,R209,R211,R338,	1K	50-0012	1	KOhm Resistor	5%	1/4	Watt	Carbon Film

9	R342,R393,R466,R503 R41,R43,R151,R255,R258, R402,R403,R413,R414	6.8K	50-0016	6.8	KOhm Resistor	5%	1/4	Watt Carbon Film
12	R61,R100,R101,R111,R181, R224,R297,R301,R322,R335, R361,R365	15K	50-0019	15	KOhm Resistor	5%	1/4	Watt Carbon Film
32	R62,R122,R125,R158,R164, R166,R176,R192,R193,R196, R199,R208,R210,R212,R213, R261,R264,R267,R270,R273, R276,R279,R282,R285,R288, R291,R294,R318,R337,R343, R442,R443	100K	50-0036	100	KOhm Resistor	5%	1/4	Watt Carbon Film
16	R66,R79,R168,R197,R216, R254,R317,R321,R323,R324, R388,R424,R428,R452,R454, R469	470K	50-0042	470	KOhm Resistor	5%	1/4	Watt Carbon Film
10	R67,R68,R406,R408,R415, R416,R417,R420,R421,R425	27K	50-0027	27	KOhm Resistor	5%	1/4	Watt Carbon Film
9	R90,R103,R104,R245,R246, R248,R257,R260,R368	7.5K	50-0017	7.5	KOhm Resistor	5%	1/4	Watt Carbon Film
3	R91,R115,R116	22M 10%	50-0308	22M	MOhm Resistor	10%	1/4	Watt Carbon Film
5	R92,R130,R131,R203,R496	470	50-0006	470	Ohm Resistor	5%	1/4	Watt Carbon Film
2	R94,R146	1.2M	50-0277	1.2	MOhm Resistor	5%	1/4	Watt Carbon Film
10	R95,R112,R138,R182,R336, R340,R449,R450,R451,R453	51	50-0002	51	Ohm Resistor	5%	1/4	Watt Carbon Film
1	R97	22K	50-0025	22	KOhm Resistor	5%	1/4	Watt Carbon Film
17	R99,C144,C146,C147,C148, C162,C186,C194,R226,R228, R229,R244,R250,R310,R380, R407,R412	OMIT	00-0000	This part has been omitted				
5	R108,R227,R330,R394,R397	120K	50-0037	120	KOhm Resistor	5%	1/4	Watt Carbon Film
3	R109,R437,R438	62K	50-0032	62	KOhm Resistor	5%	1/4	Watt Carbon Film
7	R110,R347,R352,R392,R423, R427,R468	33K	50-0028	33	KOhm Resistor	5%	1/4	Watt Carbon Film
18	R119,R126,R128,R155,R160, R220,R233,R298,R299,R307, R313,R316,R325,R431,R504, R505,R506,R507	47K	50-0030	47	KOhm Resistor	5%	1/4	Watt Carbon Film
7	R121,R202,R217,R306,R309,	75K	50-0033	75	KOhm Resistor	5%	1/4	Watt Carbon Film
DOD Software								
GSP2101 ARTIST MAIN BOARD 80-5039			Revised: April 29, 1996					
055039BD.000			Revision: BD					
Bill Of Materials			May 8, 1996 10:57:11					
Quan	Reference	Part	SYMAN	Description				

4	R311,R314 R124,R143,R256,R259	12K	50-0021	12	KOhm Resistor	5%	1/4	Watt Carbon Film
4	R134,R379,R396,R435	24K	50-0026	24	KOhm Resistor	5%	1/4	Watt Carbon Film
7	R156,R159,R331,R389,R434, R439,R440	220K	50-0040	220	KOhm Resistor	5%	1/4	Watt Carbon Film
2	R172,R179	39K	50-0029	39	KOhm Resistor	5%	1/4	Watt Carbon Film
1	R186	10KRX9	54-0355	10	KOhm 10-Pin SIP BX-103			
1	R198	180K	50-0039	180	KOhm Resistor	5%	1/4	Watt Carbon Film
1	R214	680	50-0007	680	Ohm Resistor	5%	1/4	Watt Carbon Film
8	R218,R219,R302,R344,R363, R364,R461,R462	3.9M	50-0048	3.9	MOhm Resistor	5%	1/4	Watt Carbon Film
9	R225,R230,R281,R367,R378, R401,R404,R405,R418	0	50-0050	0	Ohm Resistor	5%	1/4	Watt Carbon Film
14	R262,R265,R268,R271,R274, R277,R280,R283,R286,R289, R292,R295,R319,R341	681 1%	52-0325	681	Ohm Resistor	1%	1/4	Watt Metal Film
12	R263,R266,R269,R272,R275,	340K 1%	52-0254	340	KOhm Resistor	1%	1/4	Watt Metal Film

R278,R284,R287,R290,R293, R296,R320			
2	R381,R432	330K	50-0041
1	R436	820	50-0009
1	R502	1.62K 1%	52-0131
4	R513,R514,R515,R516	10.0K 1%	52-0107
1	S3	PLCC84S	70-3163
1	S10	PLCC44S	70-3024
2	S24,S54	DIP8S	70-3020
1	S57	DIP28AS	70-3165
1	S73	PLCC68S	70-3164
3	S74,S79,S81	DIP32S	70-3017
1	S75	DIP22S	70-3025
2	SR1,SR2	SR6-32_2	28-0059
2	SR3,SR4	SR6-32_1	28-0058
10	SS1,SS2,SS3,SS4,SS5,SS6, SS7,SS8,SS9,SS10	S250X250	28-1092
4	SS11,SS12,SS13,SS14	S187X687	28-0900
2	SV1,SV2	TUBE9S	32-0250
31	SW1,SW2,SW3,SW4,SW5,SW6, SW7,SW8,SW9,SW10,SW11, SW12,SW13,SW14,SW15,SW16, SW17,SW18,SW19,SW20,SW21, SW22,SW23,SW24,SW25,SW26, SW27,SW28,SW29,SW30,SW31	SW440083	44-0083
1	SW32	BINSW	44-0092
1	SW33	2PST P H1	44-0120
1	SW34	DPDTS PC	44-0027
3	TP1,TP2,TP3	TESTP	00-0000
1	U1	6N138	70-2139
23	U2,U9,U15,U16,U18,U22, U25,U33,U34,U35,U39,U50, U53,U55,U56,U62,U63,U65, U67,U68,U69,U80,U94	LF353	72-4030
1	U3	SDISCI_84	72-3177

DOD Software
 GSP2101 ARTIST MAIN BOARD 80-5039
 055039BD.000
 Bill Of Materials
 Quan Reference

May 8, 1996
 Part SYMAN

Revised: April 29, 1996
 Revision: BD
 10:57:11

Description

Page

2	U4,U5	74HC138	72-1108	3 Line to 8 Line Decoder/Demultiplexer
4	U6,U20,U21,U36	MC33078	72-4248	Dual OP-AMP
2	U7,U77	74HC04	72-1098	Hex Inverter 74HC04
1	U8	74C906	72-1087	MM74C906 HEX OD N-CHAN BUFF
1	U10	S DOS18	72-3175	Ami A/D/A interface chip
1	U11	4053A	72-0086	Triple 2 Pole Analog Mux
1	U12	SAA7360	72-3086	A/D Sigma, Delta, 18 bit
1	U13	79L05	70-4127	79L05 -5 Volt 100 mA Voltage Regulator
1	U14	78L05	70-4012	78L05 +5 Volt 100 mA Voltage Regulator
2	U17,U93	7805	70-4014	7805 +5 Volt 1 Amp Voltage Regulator
1	U19	AD1861J	72-3088	18 Bit DAC, 1 Channel high grade
9	U23,U32,U40,U41,U58,U60, U83,U85,U90	74HC574	72-1112	Octal D-Type Pos. Edge Triggered Flip-Flops
2	U24,U54	SSM2142	72-4252	Balanced Line Driver
2	U26,U52	74HC244A	72-1107	Octal Buffer-Line Driver W/3-State Outputs
3	U27,U29,U78	DBX2155	72-4055	dbx 2155 Voltage Controlled Amplifier
1	U28	LM833	72-4246	Low Noise Dual Audio Operational Amp
1	U30	4051	72-0081	8 CH Analog Multiplex
5	U31,U42,U43,U59,U61	LA10502	54-0351	8 Bit R-2R Ladder, 5.00 kOhm 1% Thick Film
2	U37,U38	VTL5C3	70-2142	VTL5C3 Vactrol Led axial
6	U44,U45,U46,U47,U48,U49	TMS44C256	72-3053	256x4 DRAM, 80NS
2	U51,U84	LM324	72-4028	Low Power Quad Operational Amplifier

1 U57	NJU7305	72-4244	Stereo 7 Band
1 U64	74HC139	72-1100	Dual 2 Line to 4 Line Decoder/Demultiplexer
4 U66,U70,U71,U72	LF347	72-4040	LF347 Wide Bandwidth Quad JFET Input Op-Amp
1 U73	64180ZCP10	72-3154	CPU Z180 Microprocessor
1 U74	KM681000AL	72-3059	128K X 8 RAM Static
1 U75	SSM2120A	72-4250	Dual VCA/ Dual Detector
1 U76	LM311	72-4027	LM311 Analog Voltage Comparator
1 U79	72-3076-02	72-3076-02	27C020-120 EPROM w/window V3.00 (GSP2101)
1 U81	72-3076-03	72-3076-03	27C020-120 EPROM w/window V3.00 (GSP2101)
1 U82	MC34064P	70-5004	MC34064 Undervoltage Sensing Circuit
3 U86,U87,U88	MAN 4740	70-2168	1-DIG 7-SEG Light Emitting Diode
1 U89	G2040AL	70-2171	4 X 20 Character Display, Stanley
1 U91	7812	70-4013	7812 +12 Volt 1 Amp Voltage Regulator TO-220
1 U92	7912	70-4017	7912 -12 Volt 1 Amp Voltage Regulator TO-220
2 V1,V2	12AX7A2	76-0002	12AX7A Tube
1 X1	24.576 MHZ	76-0039	24.576 MHZ Crystal
1 X2	20.00 MHZ	76-0321	20.00 MHZ Crystal