

1974 STYLE CABINET PLANS

-REV 1.2-



MODULUS

Instructions:

Thanks to the guys at 18Watt.com .. the best resource for Marshall 18Watt amps ever!

These Drawings are inspired by the drawing created by Graydon Stuckey (GDS Amplification) and information posted by Erik.

For wood you need to use "void free" wood, this is normally high grade birch or mahogany ply or due to the recession MDF can be used... but it leaves the tone sounding cheap.

Solid wood can be used too, but again must be of suitable void free quality.. no knotted pine cabs allowed!

If you choose to ignore this and use industrial/building grade ply you will experience a buzzy sound that would get you kicked out of most heavy metal bands... or at least drive you up the wall. .. Trust me I have been up and down the wall several times.

Dimensions have been (mostly) shown in millimetres and inches, I find cabs built with the millimetres dimensions are clearer and less confusing. But I think that has to do with my metric approach to tonality. Experiment.

There are no screws/dowels/finger joints/dovetail joints shown. If you want a fancy joint you should have enough knowledge to modify the side panel length to suit.

Wood dowels can easily be drilled and inserted , screws could be used.. some manufactures have been found to use finishing nails... either way make sure you have good clamps for holding the cab while gluing.

Check the dimensions of your chassis to ensure it will fit within the area allowed, if it does not fit you will need to adjust the mounting block positions.

REMEMBER: Think before you cut, and don't drink before you cut as you may loose a finger or two.

I will not be held responsibly for loss of limbs cause by cheap/faulty equipment or the wrong use of cheap/faulty equipment. ...and don't kill yourself.

This Document is the copyright of MODULUS Amplification. Please don't copy it wrong without my expressed permission.

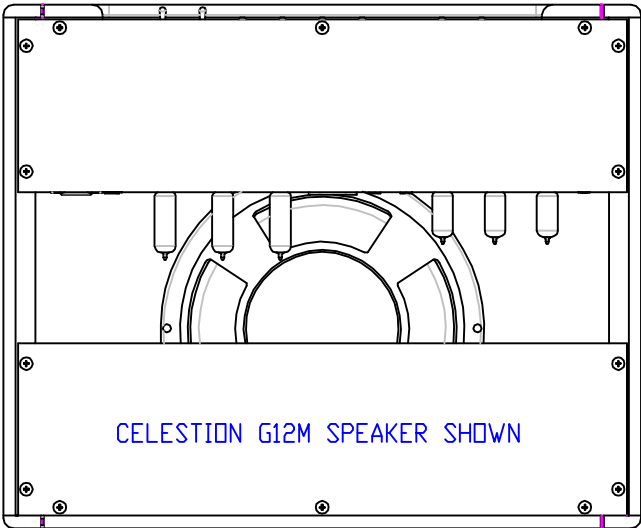
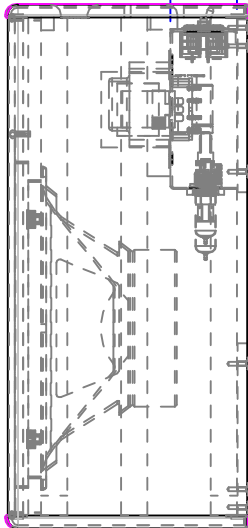
Any Questions or queries or corrections can be mailed to me at modulus-amp@uwclub.net.

Cheers


Mike

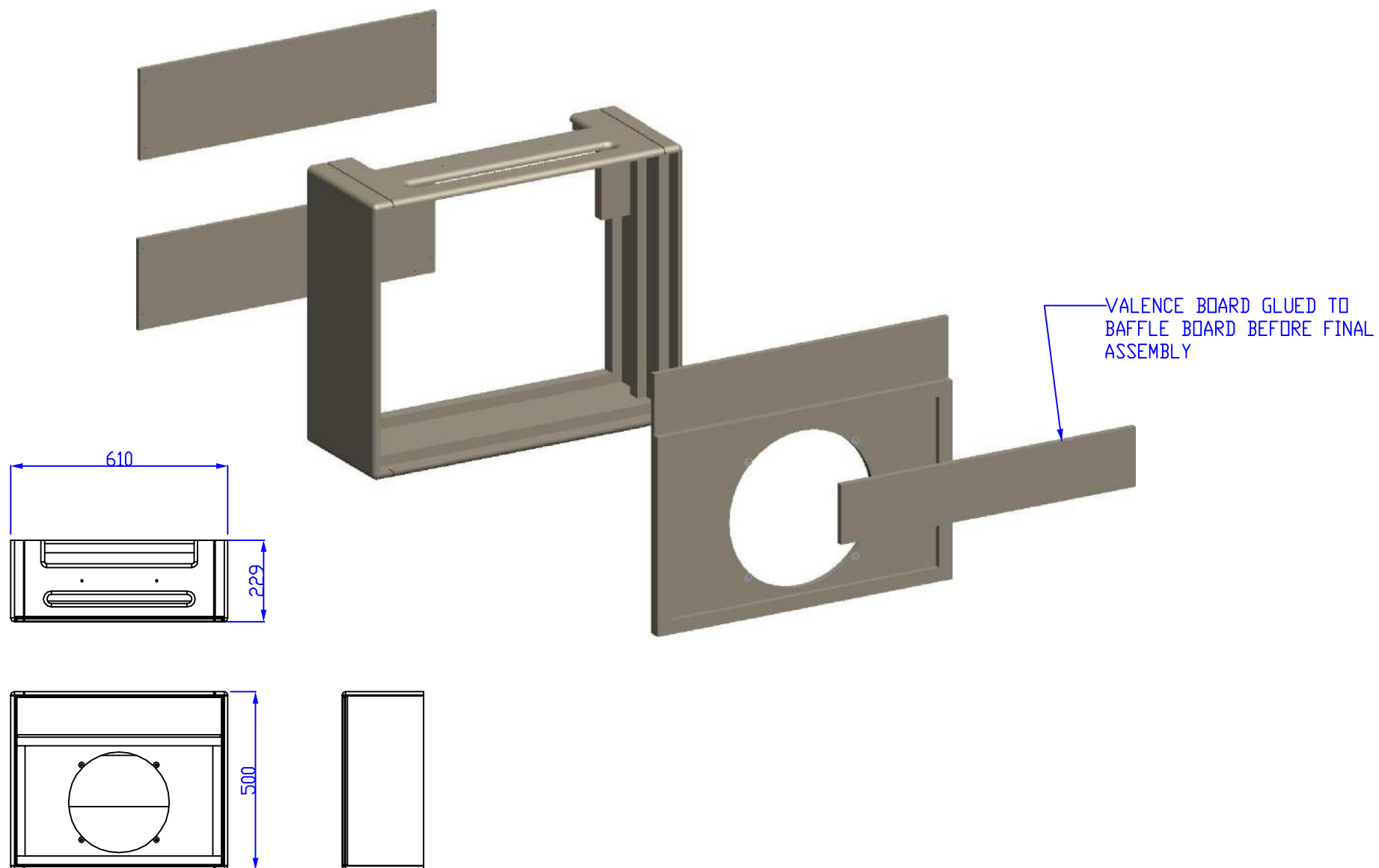


63.5 CHASSIS DEPTH -
ADJUST MOUNTING BLOCK
POSITION IF DIFFERENT

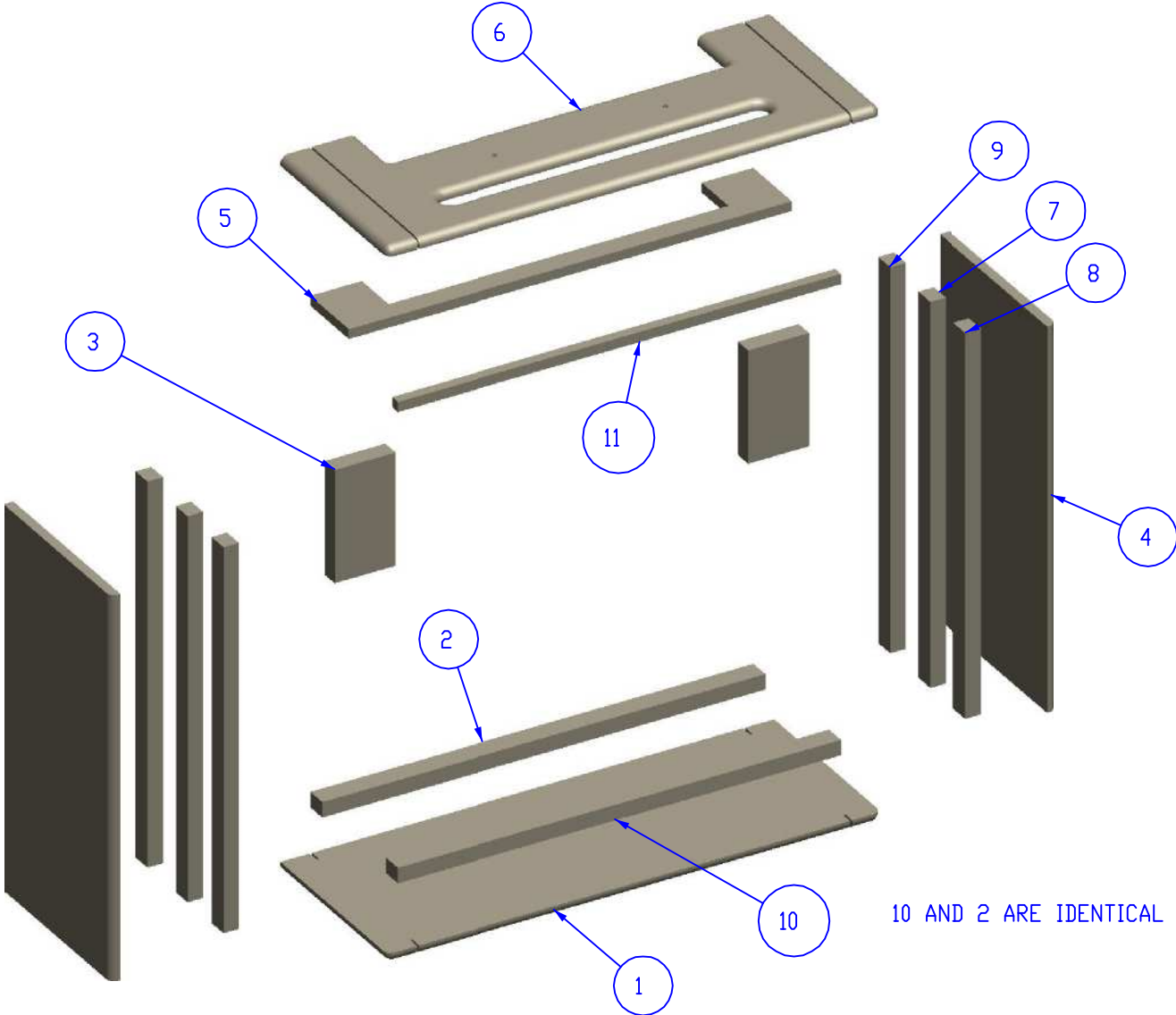


CELESTION G12M SPEAKER SHOWN

		3rd ANGLE PROJ 		THIS DRAWING IS THE PROPERTY OF MODULUS AMPLIFICATION AND MUST NOT BE REPRODUCED OR LOANED WITHOUT WRITTEN PERMISSION	
TITLE		FINAL ASSEMBLY 1974 STYLE CABINET		DRAWN BY	- M.MORTIMER
				DATE	- 20/11/08
MATERIAL		SEE DETAILS		DRAWING No.	1974
				ISSUE	01X



		3rd ANGLE PROJ 	THIS DRAWING IS THE PROPERTY OF MODULUS AMPLIFICATION AND MUST NOT BE REPRODUCED OR LOANED WITHOUT WRITTEN PERMISSION	
TITLE		BOX ASSEMBLY 1974 STYLE COMBO CABINET		DRAWN BY - M.MORTIMER DATE - 20/11/08
MATERIAL	SEE DETAILS	DRAWING No. 1974-1		ISSUE: 01X



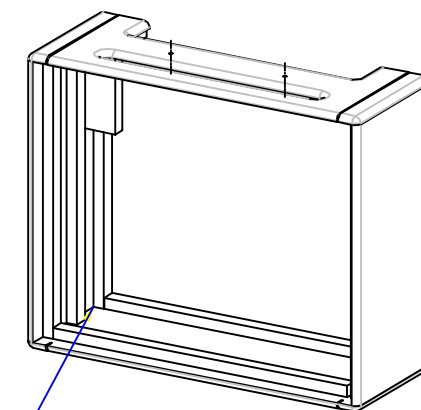
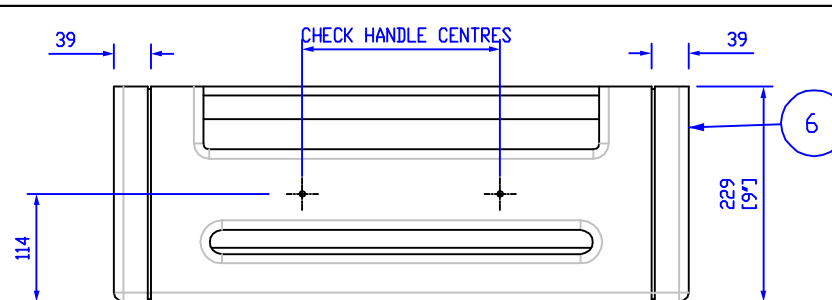
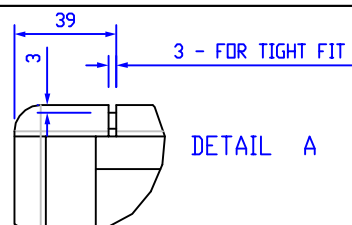
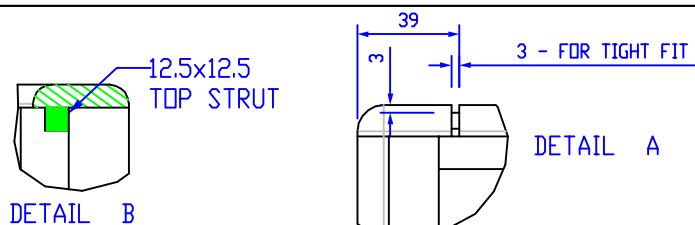
7, 8, AND 9 ARE IDENTICAL

10 AND 2 ARE IDENTICAL

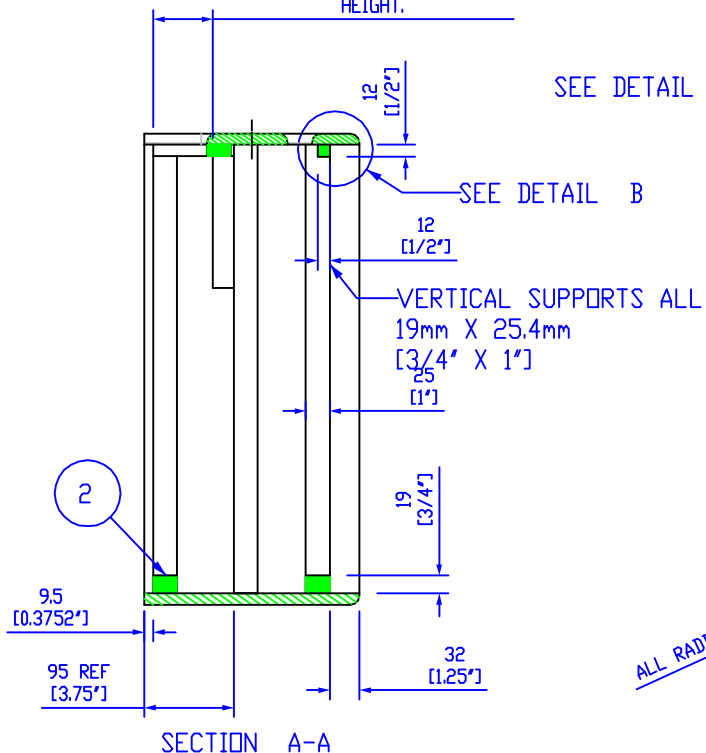
ITEM	PART	QTY
1	BOTTOM-PANEL	1
2	HOR - BATON	1
3	CHASSIS BLOCK	2
4	SIDE_PANEL	2
5	SPACER-PANEL	1
6	TOP-PANEL	1
7	VERT - BATON	2
8	VERT - BATON	2
9	VERT - BATON	2
10	HOR-BATON	1
11	HOR-BATON - SMALL	1

		3rd ANGLE PROJ	THIS DRAWING IS THE PROPERTY OF MODULUS AMPLIFICATION AND MUST NOT BE REPRODUCED OR LOANED WITHOUT WRITTEN PERMISSION	
TITLE		BOX EXPLODED VIEW		DRAWN BY - M.MORTIMER
		1974 STYLE COMBO CAB		DATE - 20/11/08
MATERIAL	SEE DETAILS	DRAWING No. 1974-2		ISSUE: 01X

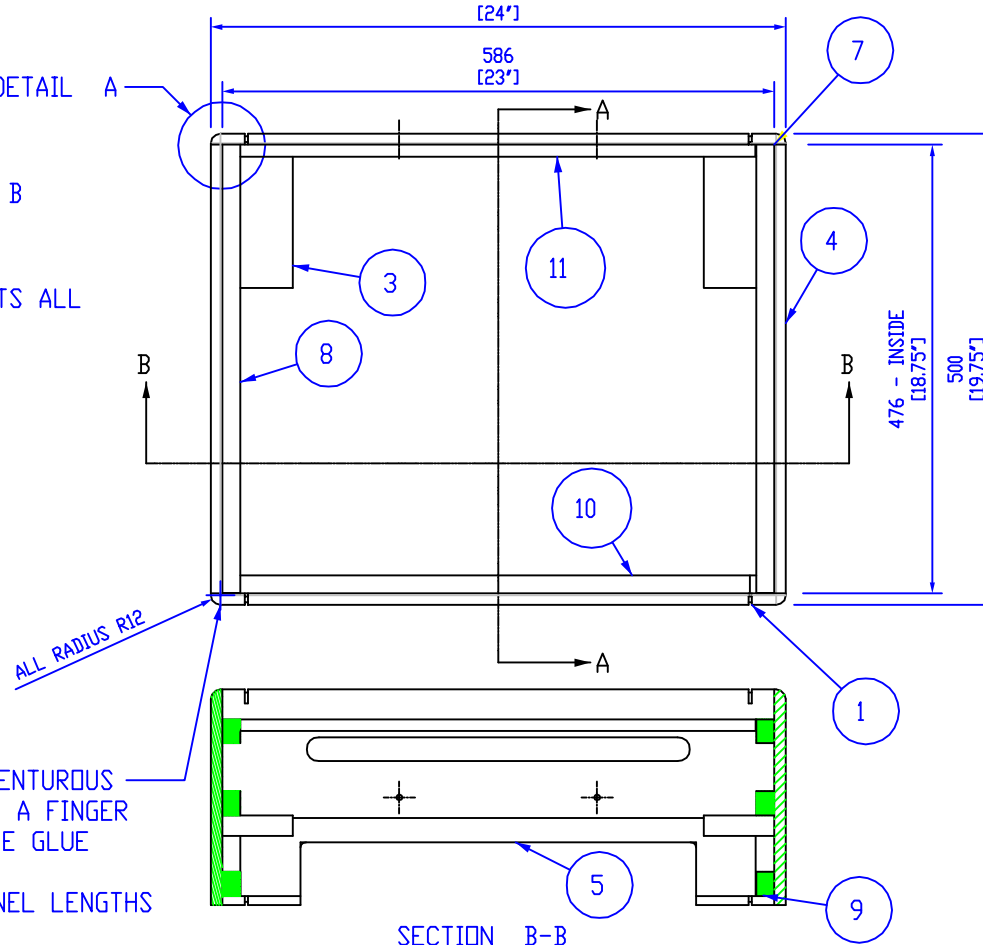
DO NOT SCALE



64 -
IMPORTANT, THIS MUST
BE THE SAME AS THE CHASSIS
HEIGHT.



SEE DETAIL A



FOR THOSE MORE ADVENTUROUS
YOU COULD MAKE THIS A FINGER
JOINTED BOX FOR MORE GLUE
CONTACT AREA.
ADJUST VERTICAL PANEL LENGTHS
TO SUIT

ITEM	PART	QTY
1	BOTTOM-PANEL	1
2	HOR-BATON	1
3	CHASSIS BLOCK	2
4	SIDE_PANEL	2
5	CH SPACER BOARD	1
6	TOP-PANEL	1
7	VERT- BATON	2
8	VERT-BATON	2
9	VERT-BATON	2
10	HOR-BATON	1
11	TOP HOR-BATON	1

3rd ANGLE PROJ



THIS DRAWING IS THE PROPERTY
OF MODULUS AMPLIFICATION AND
MUST NOT BE REPRODUCED OR
LOANED WITHOUT WRITTEN PERMISSION

TITLE
BOX ASSEMBLY
1974 STYLE COMBO CABINET

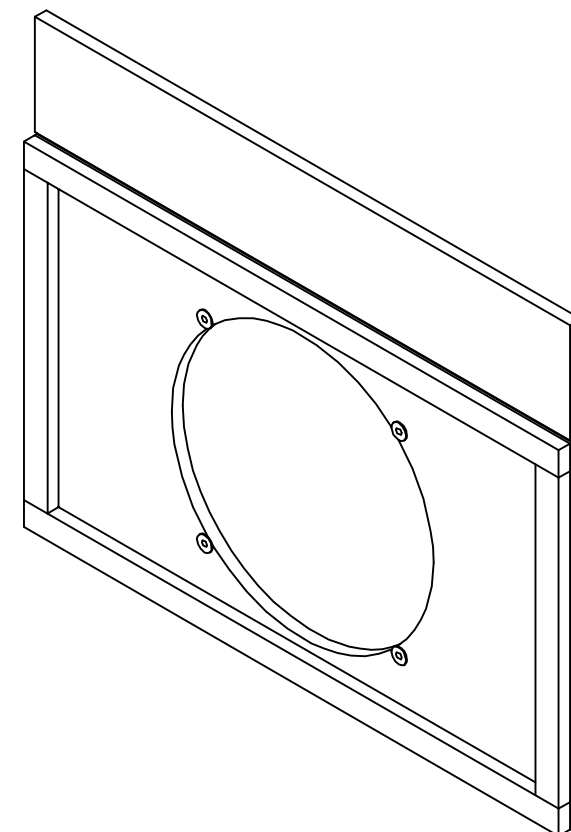
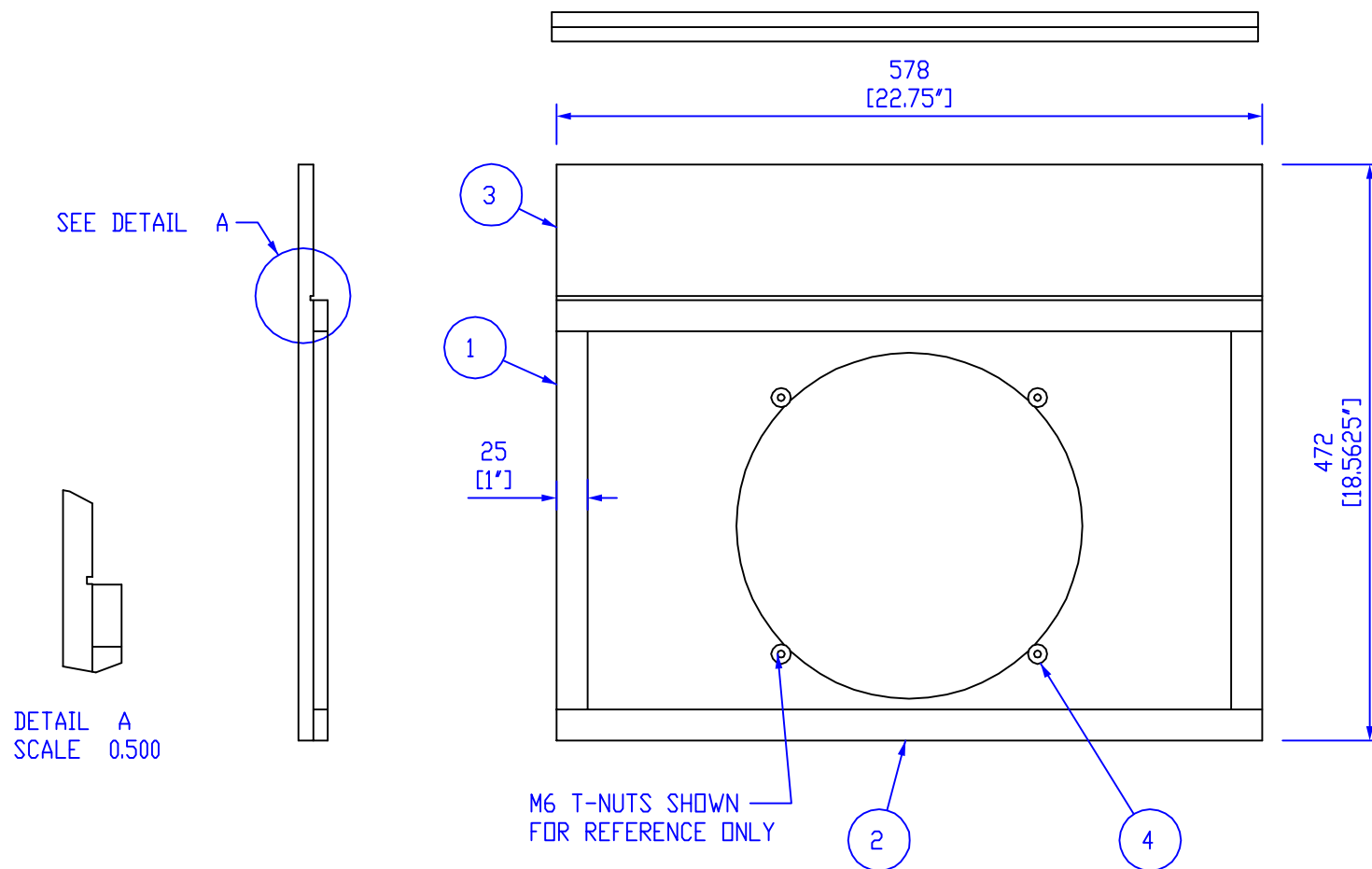
MATERIAL
SEE DETAILS

DRAWN BY - M.MORTIMER
DATE - 20/11/08

DRAWING No. 1974-3
ISSUE 01X

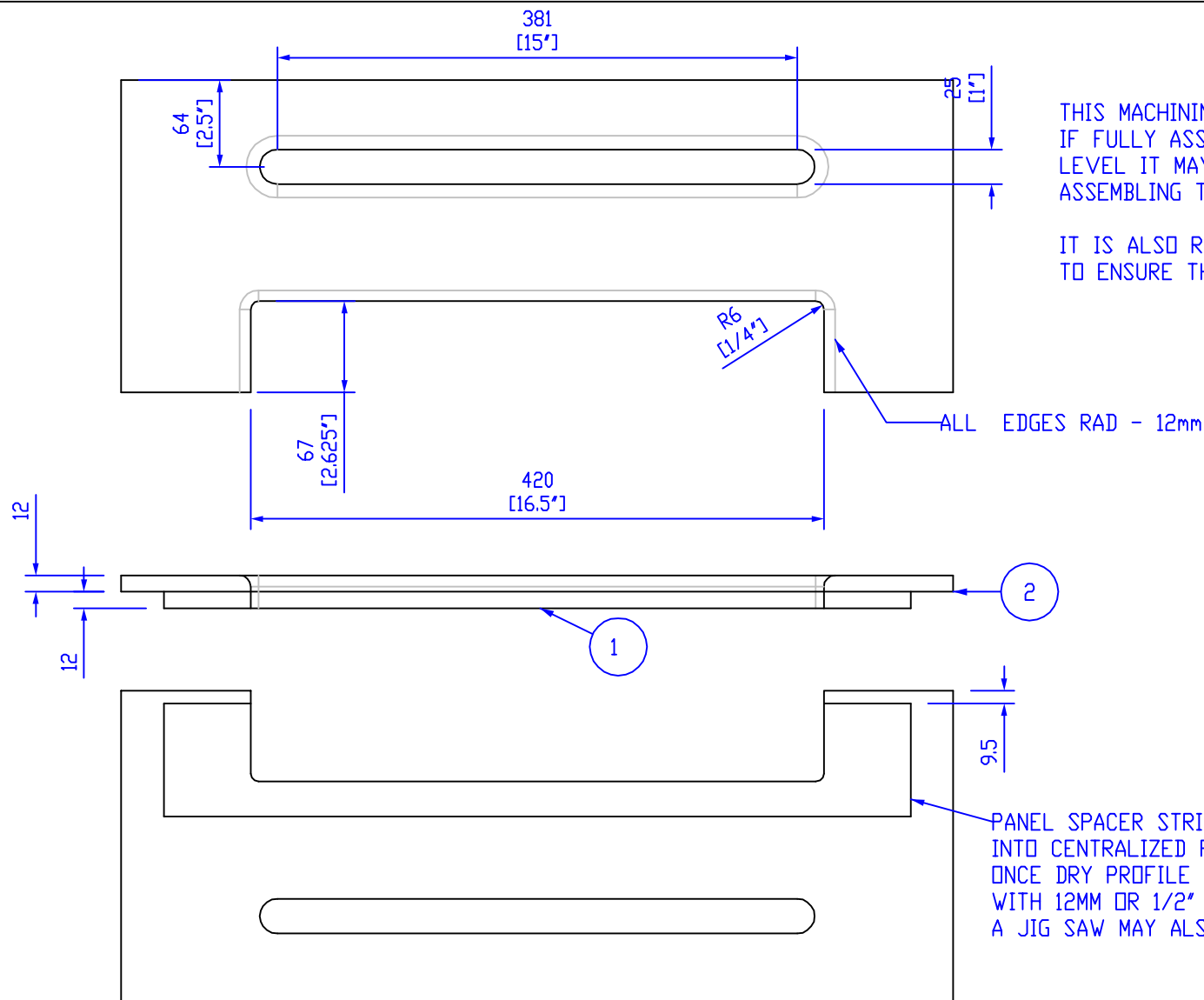
VALENCE BOARD SHOULD ONLY BE FITTED ONCE THE GRILL CLOTH HAS BEEN FITTED. DO NOT GLUE IT ON AS PART OF THIS ASSEMBLY

FOUR BAFFLE STRIPS GLUED TO BAFFLE BOARD TO SPACE GRILL CLOTH OFF MAIN BOARD AND ALIGN WITH VALENCE BOARD



ITEM	PART	QTY
1	BAFFLESTRIP	2
2	BAFFLESTRIP	2
3	BAFFLE BOARD	1
4	M6-TNUT	4

		3rd ANGLE PROJ	THIS DRAWING IS THE PROPERTY OF OF MODULUS AMPLIFICATION AND MUST NOT BE REPRODUCED OR LOANED WITHOUT WRITTEN PERMISSION	
TITLE		BAFFLE ASSEMBLY 1974 STYLE COMBO CAB	DRAWN BY	- M.MORTIMER
			DATE	- 20/11/08
MATERIAL		SEE DETAILS	DRAWING No.	ISSUE:
			1974-4	01X



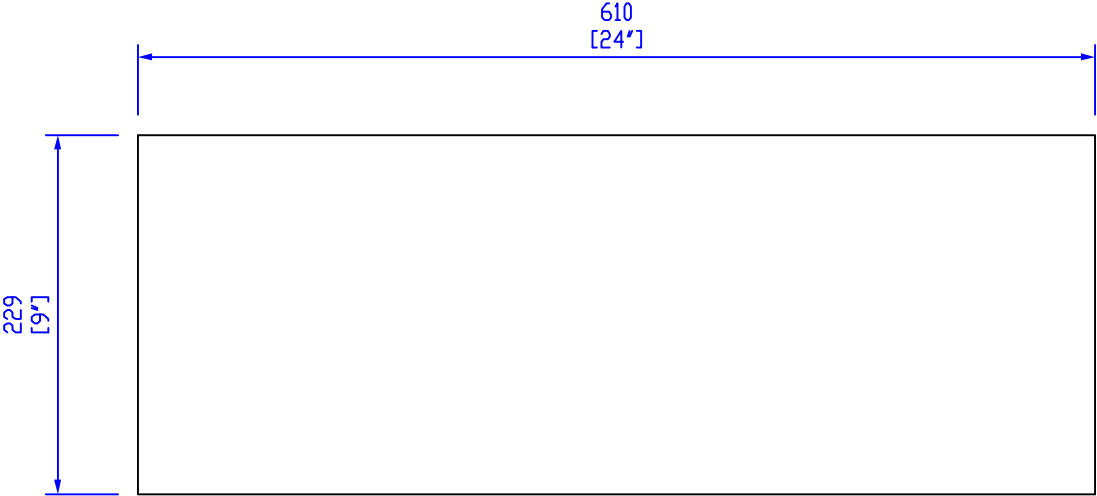
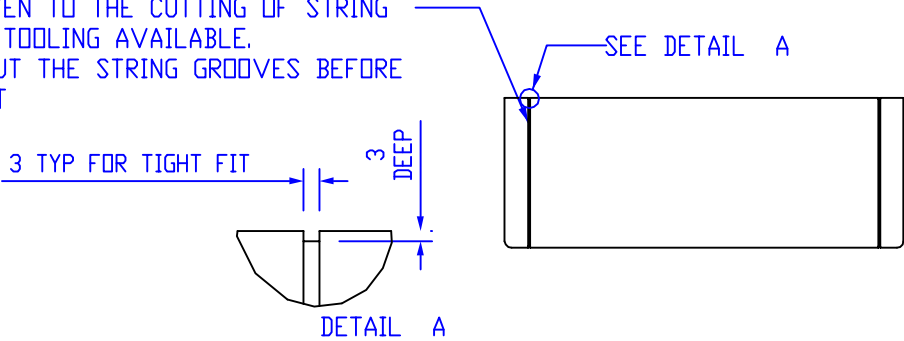
THIS MACHINING CAN BE DONE ONCE THE CABINET IS FULLY ASSEMBLED. HOWEVER DEPENDING ON SKILL LEVEL IT MAY BE BETTER TO COMPLETE THE CUT OUTS BEFORE ASSEMBLING THE CABINET IN CASE ANY BLUNDERS OCCUR.

IT IS ALSO RECOMMENDED TO USE SUITABLE GUIDES AND JIGS TO ENSURE THE ROUTER STAYS TRUE TO THE CUTLINE.

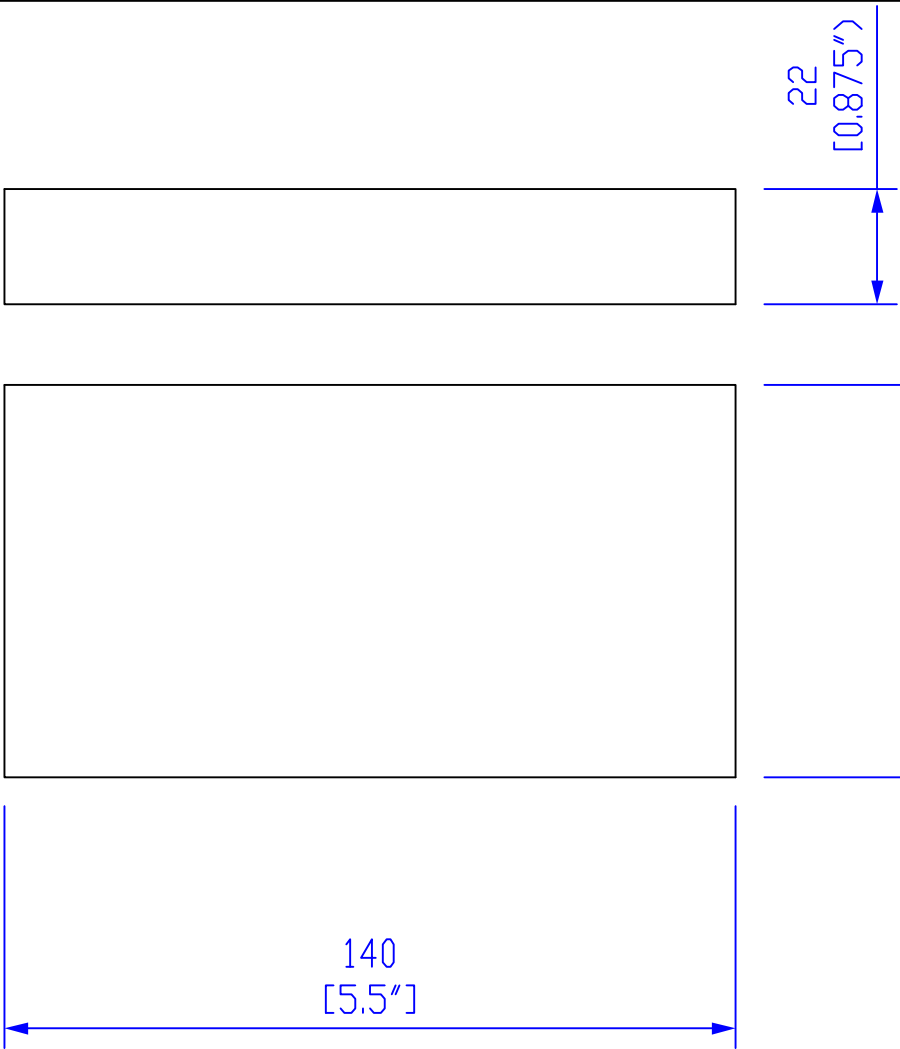
ITEM	PART	QTY
1	SPACER BOARD	1
2	TOP-PANEL	1

		3rd ANGLE PROJ	THIS DRAWING IS THE PROPERTY OF MODULUS AMPLIFICATION AND MUST NOT BE REPRODUCED OR LOANED WITHOUT WRITTEN PERMISSION	
TITLE		TOP MACHINING DETAILS 1974 STYLE COMBO CAB	DRAWN BY - M.MORTIMER DATE - 20/11/08	
MATERIAL	SEE DETAILS	1974-5	ISSUE	01X

THOUGHT SHOULD BE GIVEN TO THE CUTTING OF STRING
GROOVES DEPENDING ON TOOLING AVAILABLE.
IT MAY BE EASIER TO CUT THE STRING GROOVES BEFORE
ASSEMBLING THE CABINET




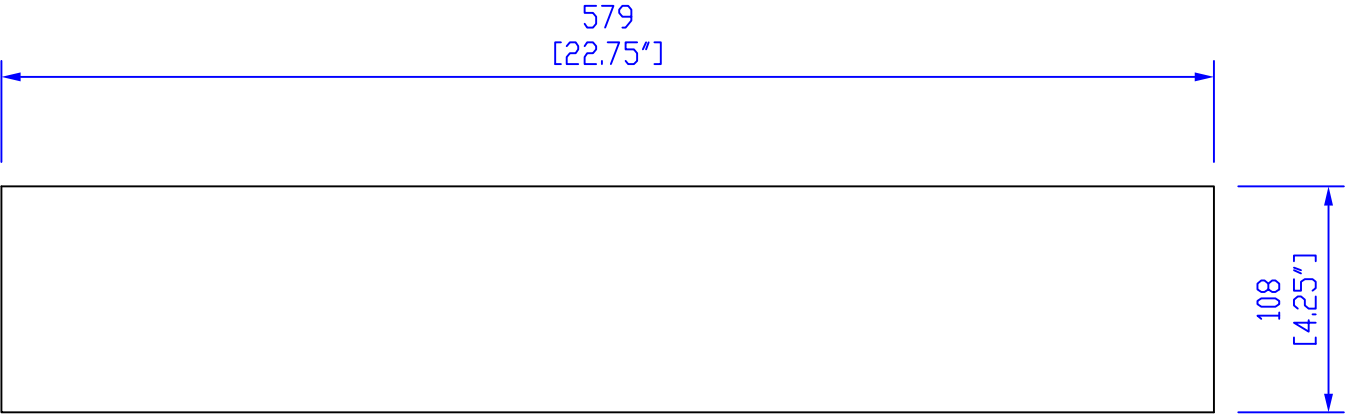
		3rd ANGLE PROJ 	THIS DRAWING IS THE PROPERTY OF MODULUS AMPLIFICATION AND MUST NOT BE REPRODUCED OR LOANED WITHOUT WRITTEN PERMISSION	
TITLE		BOTTOM PANEL 1974 STYLE CABINET		DRAWN BY - M.MORTIMER DATE - 20/11/08
MATERIAL	SEE DETAILS		1974-6	ISSUE: 01X




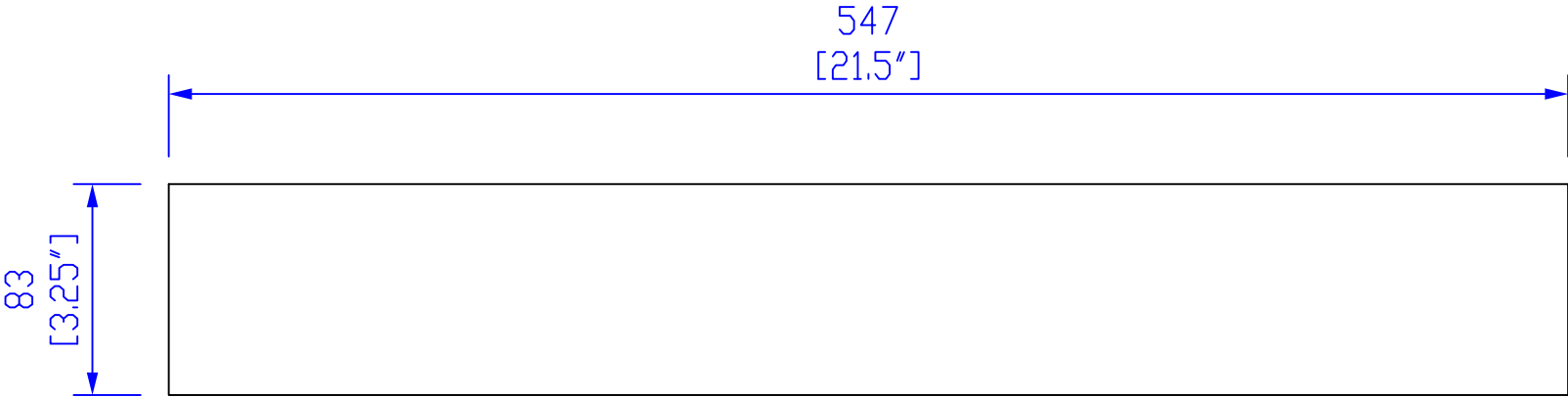
MATERIAL THICKNESS CAN BE REDUCED TO 19mm [3/4"]
HOWEVER THE POSITION OF THE VERTICAL STRUTS ON
THE COMBO ASSEMBLY MUST BE ADJUSTED TO SUIT THE
NEW BLOCK THICKNESS AND CHASSIS THICKNESS

2 REQUIRED

		3rd ANGLE PROJ 		THIS DRAWING IS THE PROPERTY OF MODULUS AMPLIFICATION AND MUST NOT BE REPRODUCED OR LOANED WITHOUT WRITTEN PERMISSION	
TITLE CHASSIS MOUNTING BLOCK 1974 STYLE COMBO CABINET				DRAWN BY - M.MORTIMER DATE - 20/11/08	
				DRAWING No. 1974-7	
MATERIAL		SEE DETAILS			

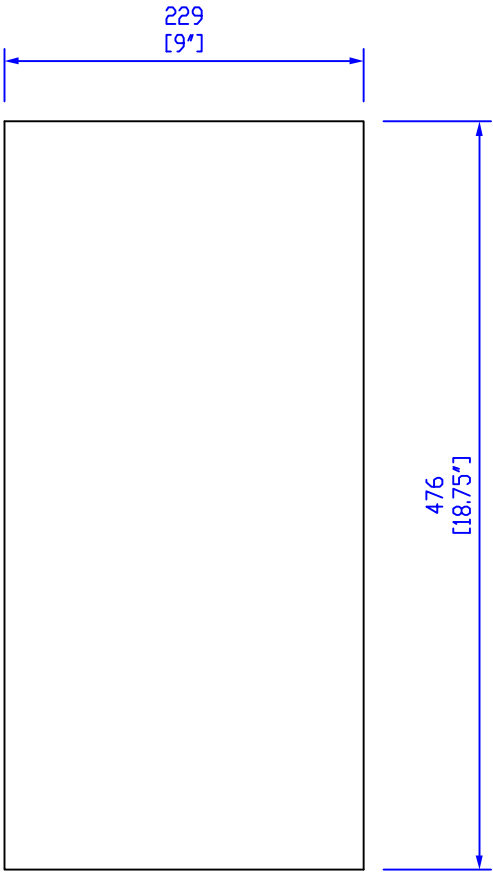


		3rd ANGLE PROJ 	THIS DRAWING IS THE PROPERTY OF MODULUS AMPLIFICATION AND MUST NOT BE REPRODUCED OR LOANED WITHOUT WRITTEN PERMISSION	
TITLE VALENCE PANEL 1974 STYLE COMBO CABINET			DRAWN BY - M.MORTIMER	
			DATE - 20/11/08	
MATERIAL		DRAWING No.		ISSUE:
		1974-8		01X
SEE DETAILS				



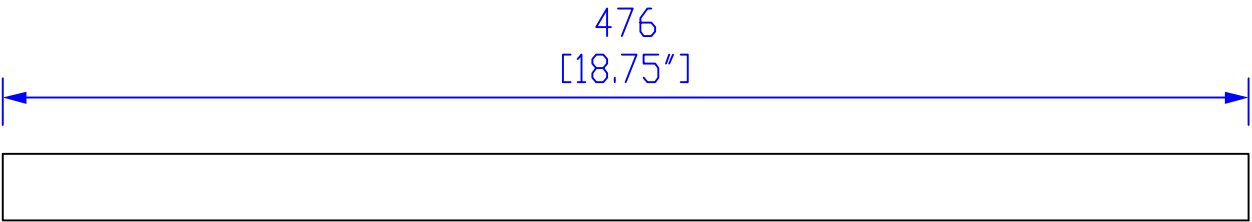
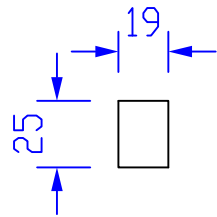
1 - REQUIRED
THIS PART IS MACHINED TO SHAPE AFTER GLUEING TO TOP PANEL

		3rd ANGLE PROJ	THIS DRAWING IS THE PROPERTY OF MODULUS AMPLIFICATION AND MUST NOT BE REPRODUCED OR LOANED WITHOUT WRITTEN PERMISSION	
TITLE		DRAWN BY - M.MORTIMER		
		DATE - 20/11/08		
MATERIAL	SEE DETAILS	DRAWING No.	1974-9	ISSUE: 01X

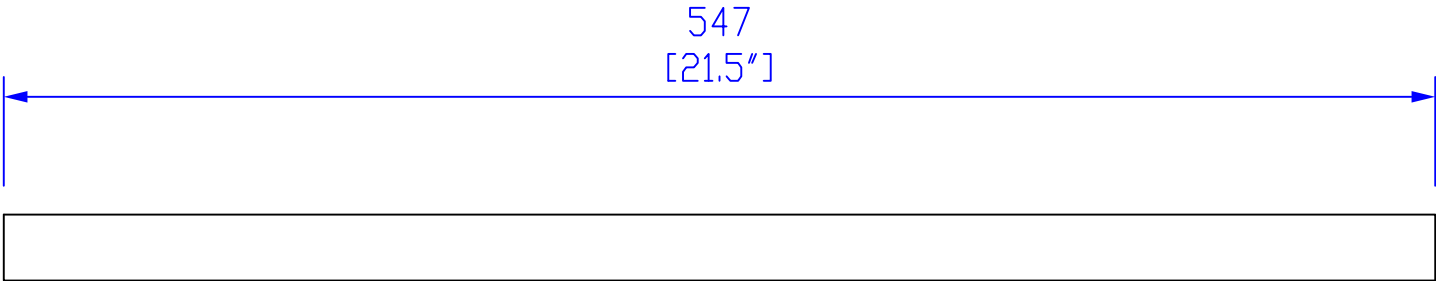
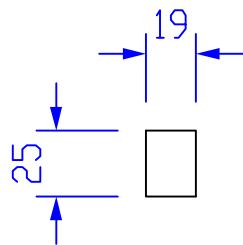


2 - REQUIRED

		3rd ANGLE PROJ	THIS DRAWING IS THE PROPERTY OF MODULUS AMPLIFICATION AND MUST NOT BE REPRODUCED OR LOANED WITHOUT WRITTEN PERMISSION	
TITLE			DRAWN BY - M.MORTIMER	
SIDE PANEL			DATE - 20/11/08	
1974 STYLE CABINET			DRAWING No.	ISSUE
MATERIAL	SEE DETAILS		1974-10	01X

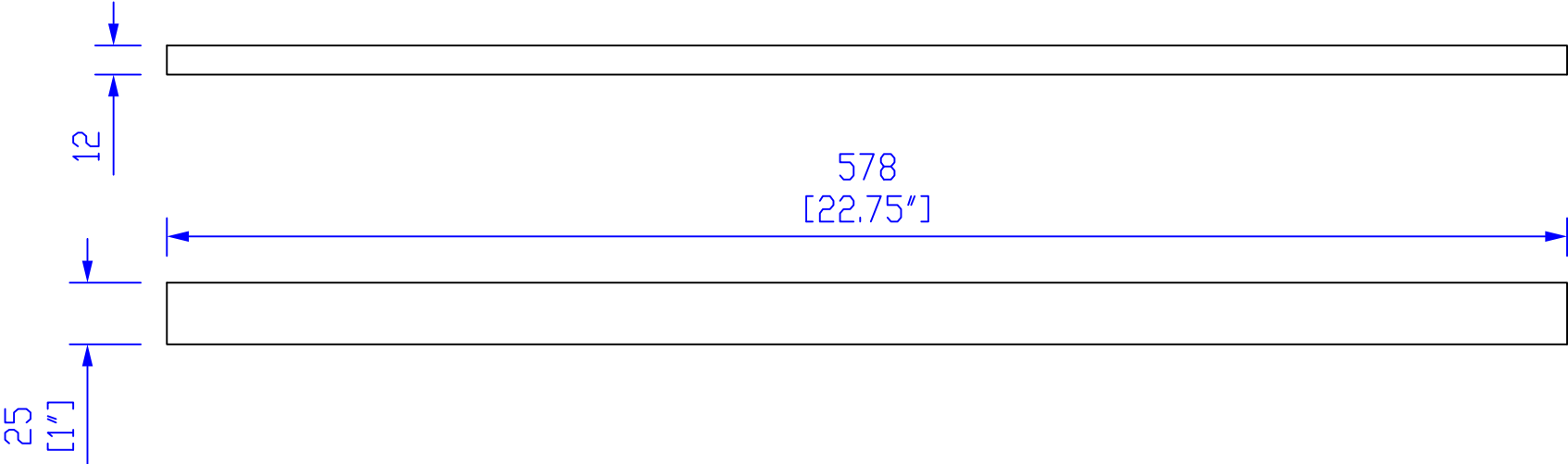


VERTICAL BATONS - 6 THIS LENGTH REQUIRED



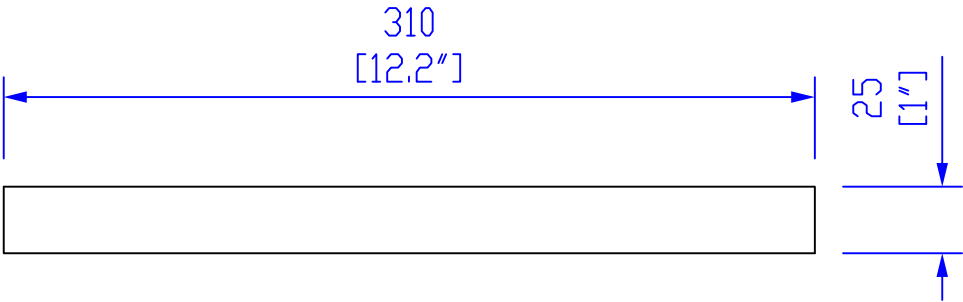
HORIZONTAL BATONS - 2 REQUIRED


		3rd ANGLE PROJ 	THIS DRAWING IS THE PROPERTY OF MODULUS AMPLIFICATION AND MUST NOT BE REPRODUCED OR LOANED WITHOUT WRITTEN PERMISSION	
TITLE BATONS 1974 STYLE COMBO CAB		DRAWN BY - M.MORTIMER DATE - 20/11/08		
MATERIAL	SEE DETAILS	DRAWING No. 1974-11		ISSUE 01X



2 REQUIRED

		3rd ANGLE PROJ	THIS DRAWING IS THE PROPERTY OF MODULUS AMPLIFICATION AND MUST NOT BE REPRODUCED OR LOANED WITHOUT WRITTEN PERMISSION	
TITLE		BAFFLE STRIP - LONG		DRAWN BY - M.MORTIMER
		1974 STYLE COMBO CAB		DATE - 20/11/08
MATERIAL	SEE DETAILS	DRAWING No. 1974-12		ISSUE: 01X

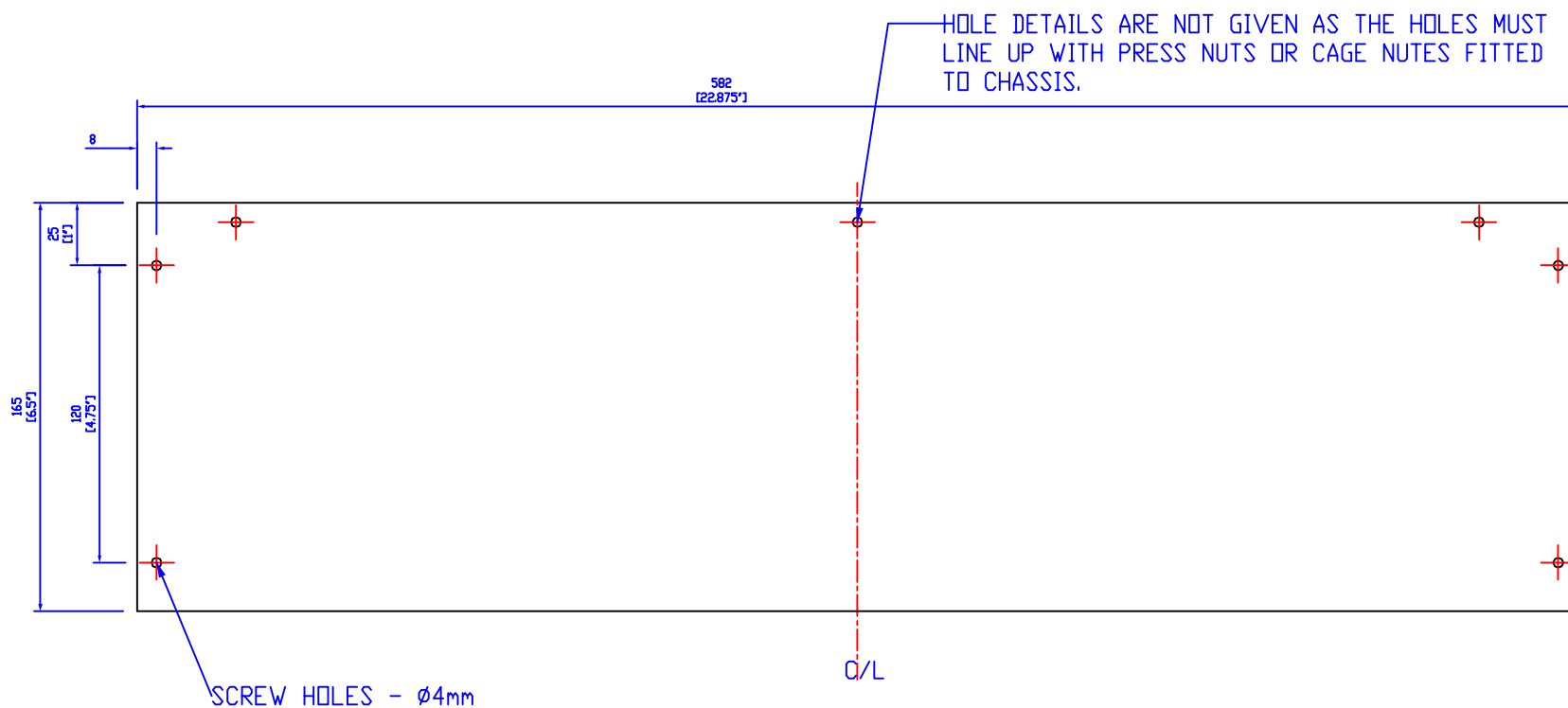


		3rd ANGLE PROJ 		THIS DRAWING IS THE PROPERTY OF MODULUS AMPLIFICATION AND MUST NOT BE REPRODUCED OR LOANED WITHOUT WRITTEN PERMISSION	
TITLE		BAFFLE STRIP - SHORT 1974 STYLE COMBO CAB		DRAWN BY - M.MORTIMER DATE - 20/11/08	
MATERIAL	SEE DETAILS		DRAWING No. 1974-13		ISSUE 01X


IMPORTANT:
CHECK YOUR OVERALL CHASSIS
DIMENSION TO ENSURE 152MM IS
SUFFICIENT TO FULLY CLOSE OFF
CHASSIS REAR.

IF NOT - THE 165mm SIZE MUST BE
INCREASED TO AT LEAST YOUR
CHASSIS WIDTH + 13mm [1/2"]

THIS ONLY APPLIES TO THE TOP
PANEL



2 - REQUIRED

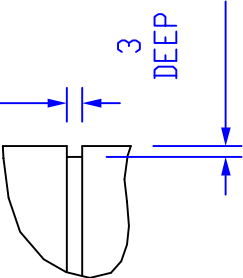
		3rd ANGLE PROJ 	THIS DRAWING IS THE PROPERTY OF MODULUS AMPLIFICATION AND MUST NOT BE REPRODUCED OR LOANED WITHOUT WRITTEN PERMISSION	
TITLE TOP AND BOTTOM REAR COVERS 1974 STYLE CABINET			DRAWN BY - M.MORTIMER	
			DATE - 20/11/08	
MATERIAL SEE DETAILS			DRAWING No.	ISSUE:
			1974-14	01X

THOUGHT SHOULD BE GIVEN TO THE CUTTING OF STRING
GROOVES DEPENDING ON TOOLING AVAILABLE.
IT MAY BE EASIER TO CUT THE STRING GROOVES BEFORE
ASSEMBLING THE CABINET

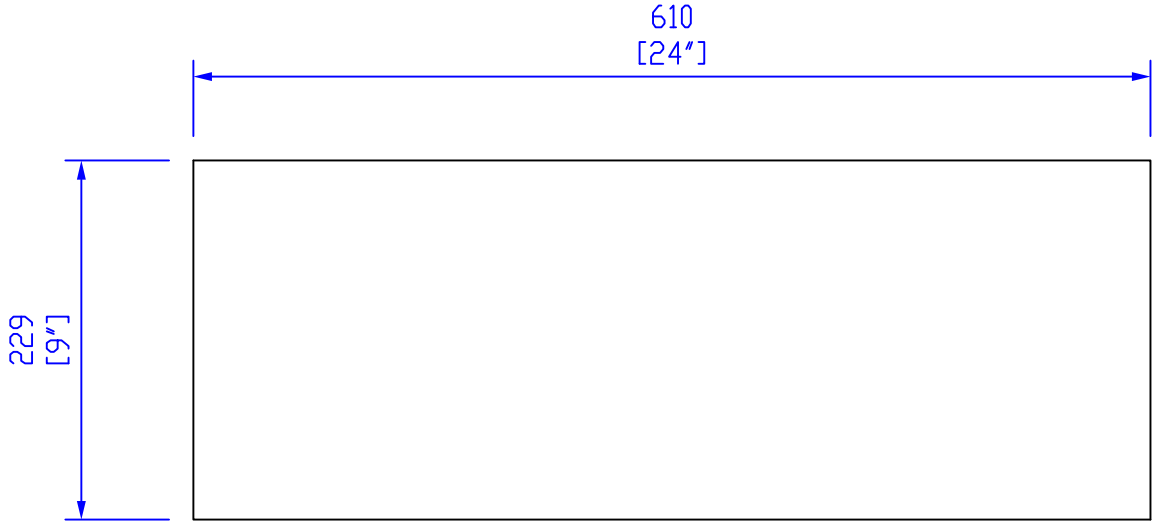
SEE DETAIL A



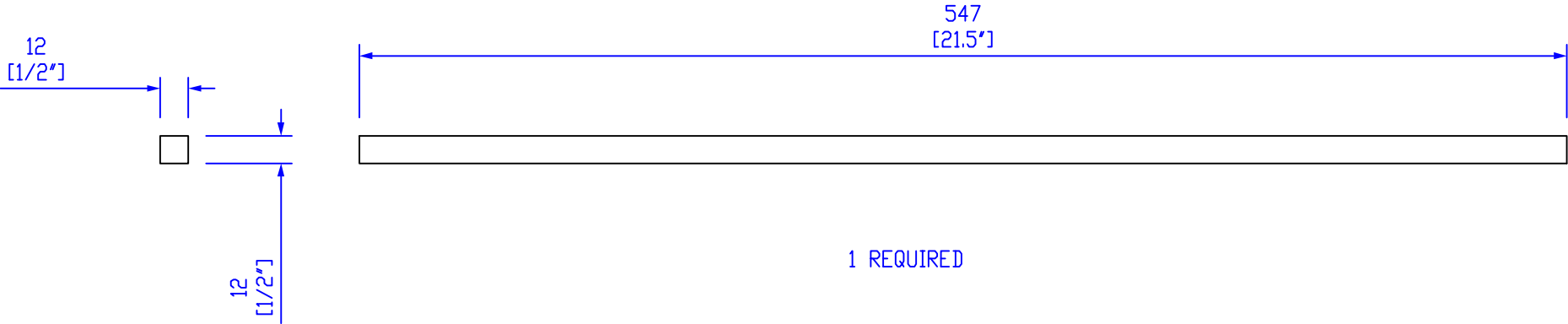
3 TYP FOR A TIGHT FIT
CHECK DIAMETER OF STRING
BEING USED AND THICKNESS
OF COVERING



DETAIL A

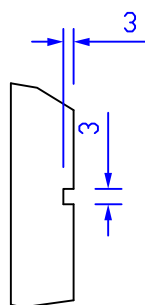


		3rd ANGLE PROJ 	THIS DRAWING IS THE PROPERTY OF MODULUS AMPLIFICATION AND MUST NOT BE REPRODUCED OR LOANED WITHOUT WRITTEN PERMISSION	
TITLE		TOP PANEL 1974 STYLE CABINET		DRAWN BY - M.MORTIMER DATE - 20/11/08
MATERIAL	SEE DETAILS		1974-15	ISSUE: 01X

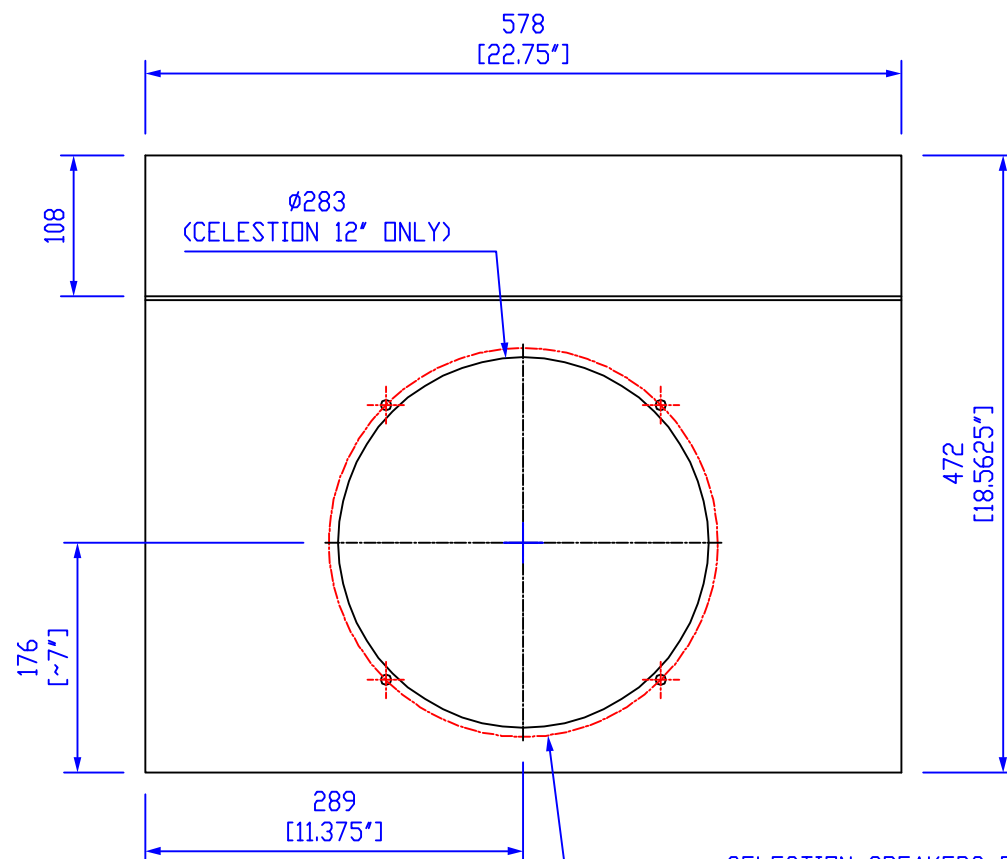
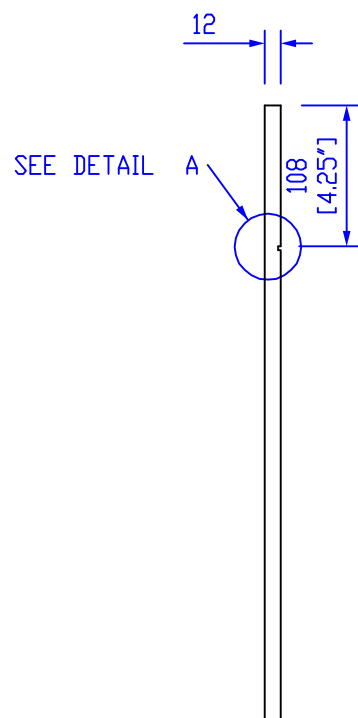


		3rd ANGLE PROJ	THIS DRAWING IS THE PROPERTY OF MODULUS AMPLIFICATION AND MUST NOT BE REPRODUCED OR LOANED WITHOUT WRITTEN PERMISSION	
TITLE		TOP BATON 1974 STYLE COMBO CAB		DRAWN BY - M.MORTIMER DATE - 20/11/08
MATERIAL	SEE DETAILS	DRAWING No. 1974-16		ISSUE: 01X

DETAIL A




SLOT CUT INTO BAFFLE TO ALLOW
FOR WINGED PIPING.
THIS MAY NOT BE NECESSARY, BUT
CAN HELP WHEN ALIGNING THE BAFFLE STRIPS.



CELESTION SPEAKERS ONLY:
ø297 4 MOUNTING HOLES EQUAL SPACED
ON PCD 297mm.

DEPENDENT ON METHOD OF MOUNTING THE
SPEAKER THE HOLE DIAMETER SHOULD BE
DRILLED TO SUIT T-NUTS OR MOUNTING SCREWS

		3rd ANGLE PROJ 	THIS DRAWING IS THE PROPERTY OF MODULUS AMPLIFICATION AND MUST NOT BE REPRODUCED OR LOANED WITHOUT WRITTEN PERMISSION	
TITLE BAFFLE BOARD 1974 STYLE COMBO CABINET			DRAWN BY DATE	- M.MORTIMER - 20/11/08
MATERIAL			DRAWING No.	ISSUE:
SEE DETAILS			1974-7	01X