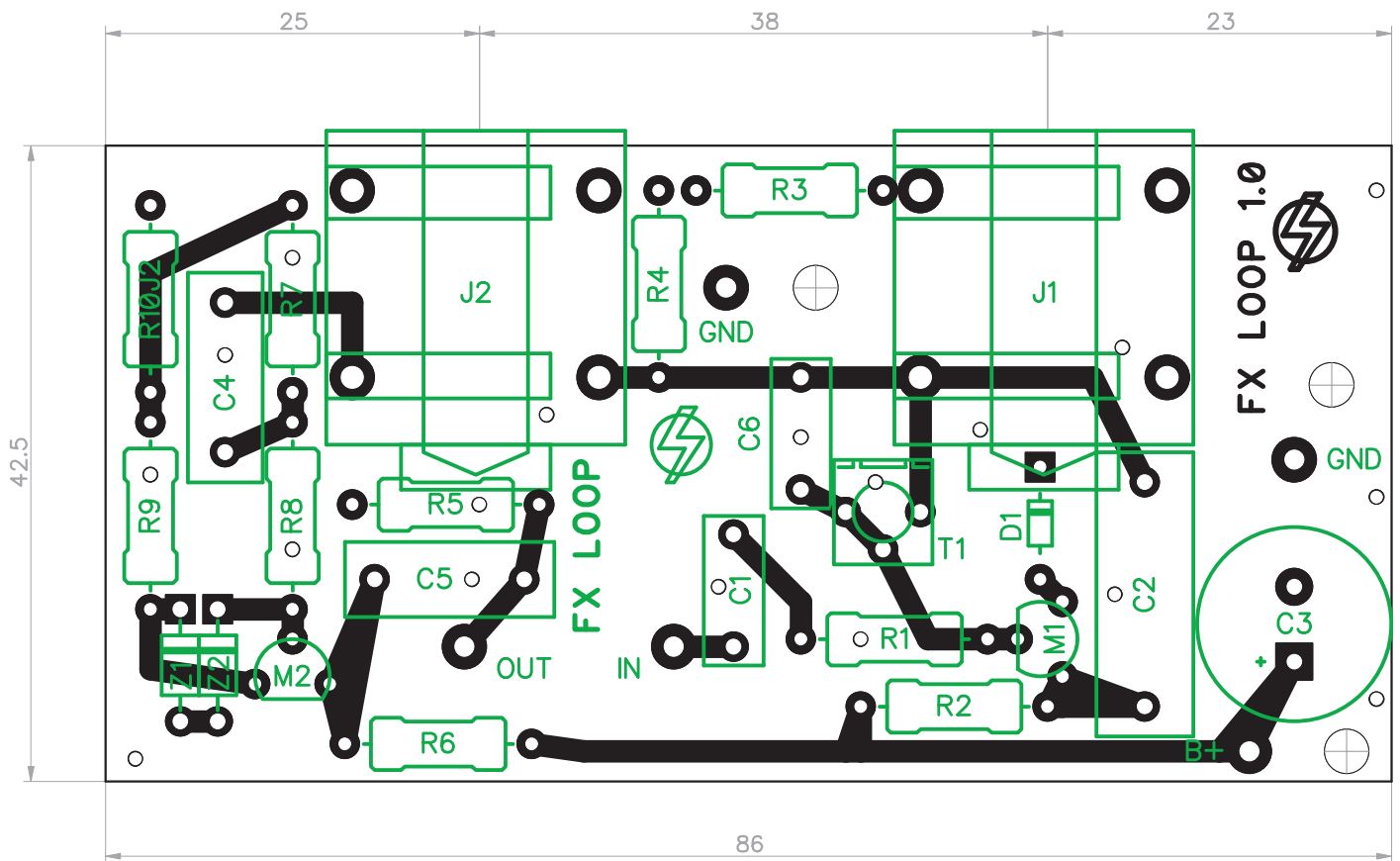
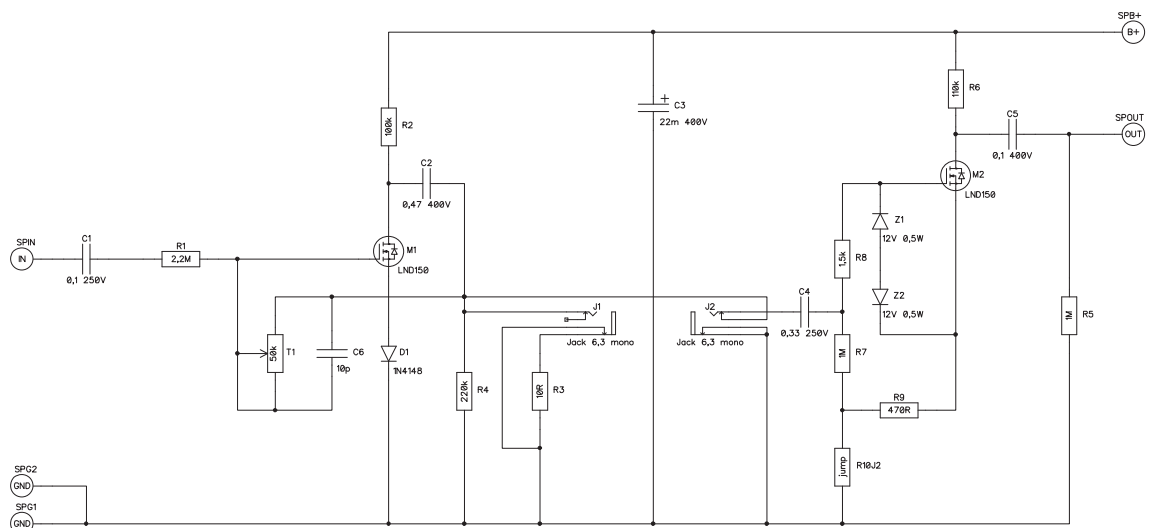


# MetroAmp FX Loop rev 3A

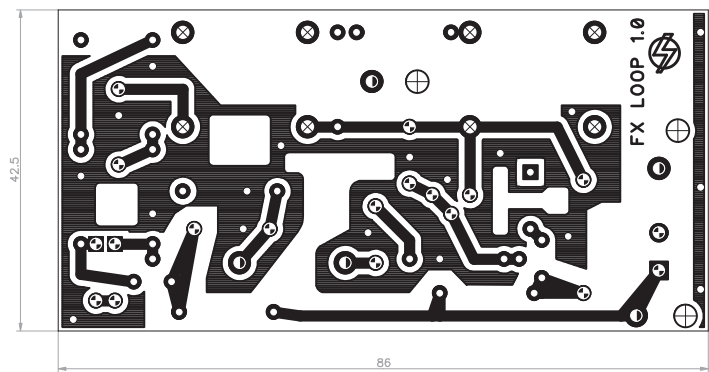


Mark	Value	Quantity
C1	0,1 250V	1
C2	0,47 400V	1
C3	22m 400V	1
C4	0,33 250V	1
C5	0,1 400V	1
C6	10p	1
D1	1N4148	1
J1, J2	Jack 6,3 mono	2
M1, M2	LND150	2

Mark	Value	Quantity
R1	2,2M	1
R2	100k	1
R3	10R	1
R4	220k	1
R5, R7	1M	2
R6	110k	1
R8	1,5k	1
R9	470R	1
R10J2	jump	1
T1	50k	1
Z1, Z2	12V 0,5W	2



# Hole drilling instructions



Mark	Diameter, mm	Quantity
	0,8	46
	1,0	19
	1,3	5
	1,5	8
	3,0	3

## For toner transfer

