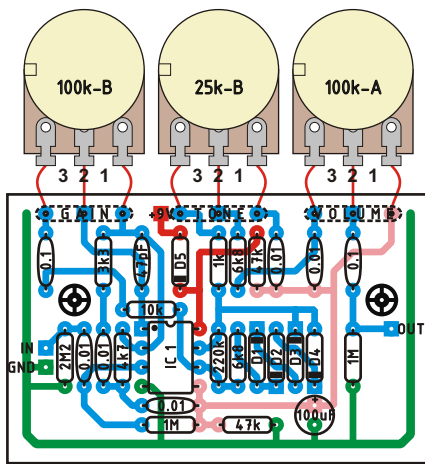
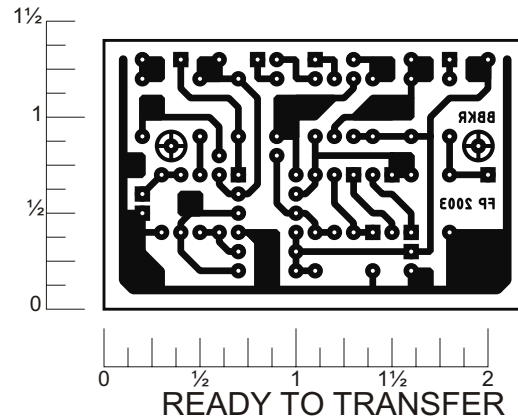


Build a Bluesbreaker work alike with true bypass on this layout. Off board components except for the potentiometers are not shown on the layout. Trademarks remain property of their owners.



LAYOUT



READY TO TRANSFER

Parts List

Resistors

- 1 - 1k
- 1 - 3.3k (3k3)
- 1 - 4.7k (4k7)
- 2 - 6.8k (6k8)
- 1 - 10k
- 2 - 47k
- 1 - 220k
- 2 - 1M
- 1 - 2.2M (2M2)

Pots

- 1 - 100k Lin
- 1 - 100k Log
- 1 - 25k Lin

Capacitors

- 1 - 100 μ F
- 5 - 0.01 μ F
- 2 - 0.1 μ F
- 1 - 47 pF

Diodes

- D1 - 1N914
- D2 - 1N914
- D3 - 1N914
- D4 - 1N914
- D5 - 1N4001

IC's

- IC1 - TL072

Schematic

