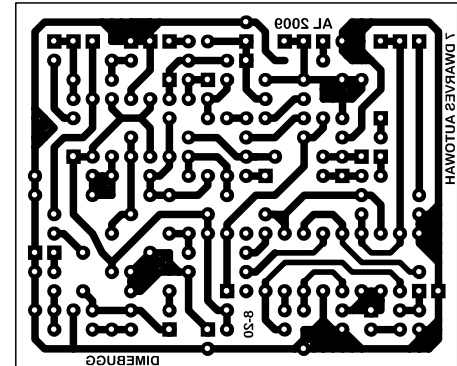


READY TO TRANSFER:



SQUARE pad of diodes indicates the banded side(cathode).

R1 5K1	R16 6K8	C1 22n	D1 1N4148
R2 330R	R17 10K	C2 68n	D2 1N4148
R3 330R	R18 20k	C3 220n	D3 5.1V zener
R4 1M	R19 4.7M	C4 8n2	D4 1N4002
R5 10k	R20 47R	C5 22n	D5 1N4002
R6 1M	R21 47K	C6 22n	D6 1N4148
R7 330R	R22 47K	C7 100uF	Q1 BC550C
R8 6K8	R23 10k	C8 2.2uF	Q2 BC550C
R9 4.7M	R24 20k	C9 1uF	Q4 N-channel JFET
R10 20K	R25 1K	C10 100n	
R11 20K	R26 7K9	C11 1uF	
R12 330R	R27 4K7		B50K Resonance
R13 330R	R28 100K	IC3 78L05	B100K Sensitivity
R14 4.7K	R29 1K		B50K Bias
R15 4.7K	R30 6K8		C1M Decay
	R31 6K8		