

Marshall

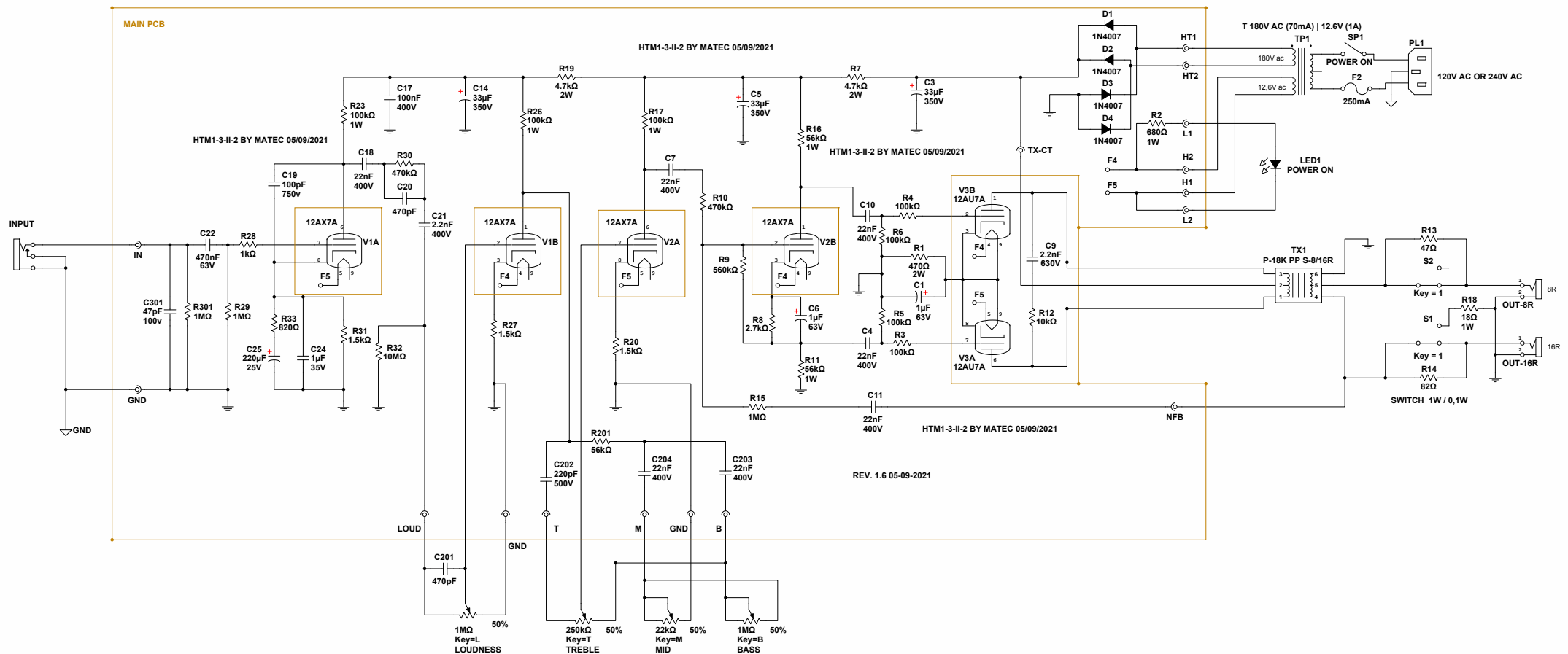
HANDWIRED

JTM-1 HANDMADES VERSION

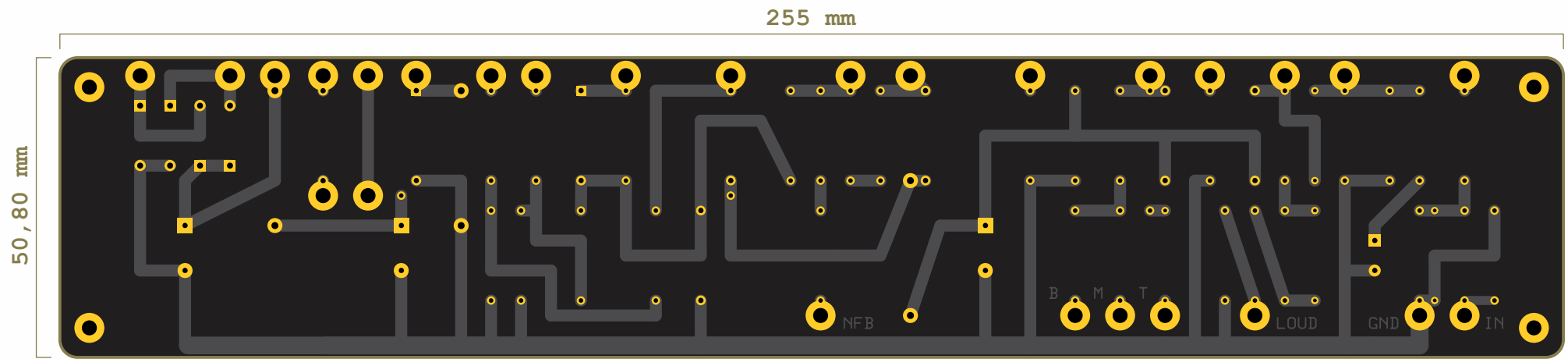


BY MATEC
HANDMADES.COM.BR/FORUM

BY MATEC
HANDMADES.COM.BR/FORUM

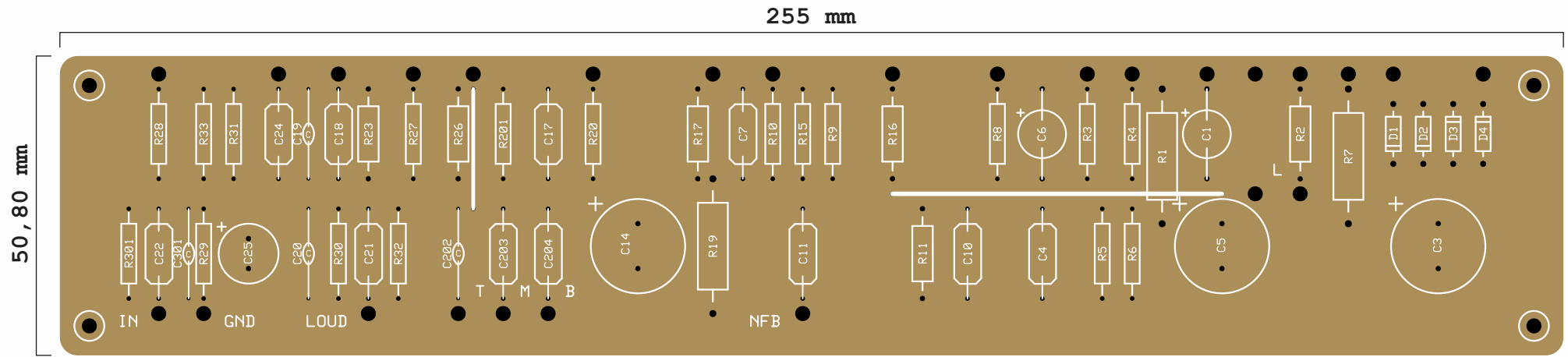


PCB - COPPER SIDE



BY MATEC
HANDMADES.COM.BR/FORUM

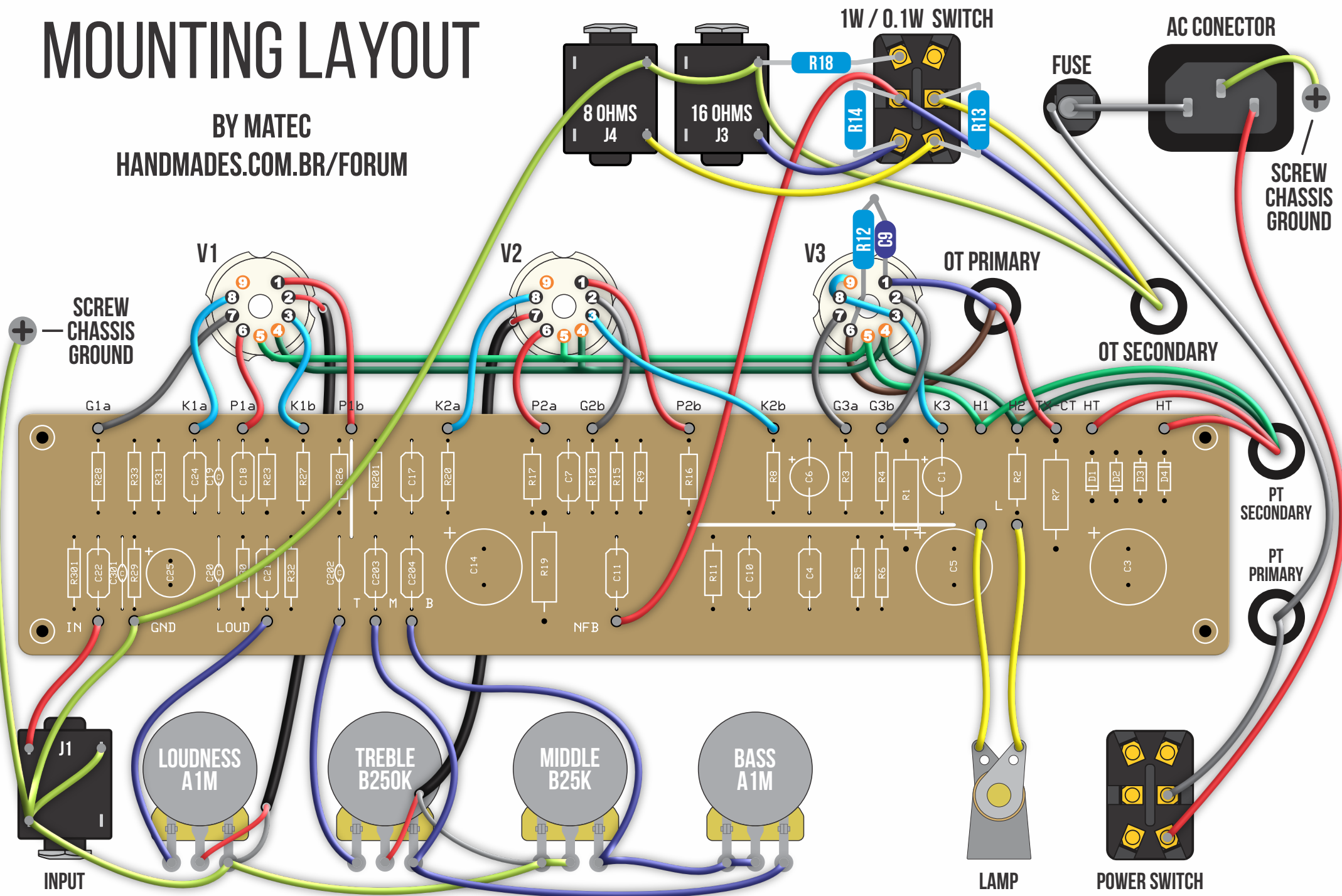
PCB - COMPONENT SIDE



BY MATEC
HANDMADES.COM.BR/FORUM

MOUNTING LAYOUT

BY MATEC
HANDMADES.COM.BR/FORUM



LIST OF COMPONENTS

RESISTORS

R1: 470R (2W)
R2: 680R (1W)
R3: 100K
R4: 100K
R5: 100K
R6: 100K
R7: 4.7K (2W)
R8: 2.7K
R9: 560K
R10: 470K
R11: 56K (1W)
R12: 10K (1W)
R13: 47R
R14: 82R
R15: 1M
R16: 56K (1W)
R17: 100K (1W)
R18: 18R (2W)
R19: 4.7K (2W)
R20: 1.5K
R23: 100K (1W)
R26: 100K (1W)
R27: 1.5K
R28: 1K
R29: 1M
R30: 470K
R31: 2.7K
R32: 10M
R33: 820R
R201: 56K
R301: 1M

CAPACITORS

C1: 1uF (63V)
C3: 33uF (350V)
C4: 22nF (400V)
C5: 33uF (350V)
C6: 1uF (63V)
C7: 22nF (400V)
C9: 2.2nF (630V)
C10: 22nF (400V)
C11: 22nF (100V)
C14: 33uF (350V)
C17: 100nF (400V)
C18: 22nF (400V)
C19: 100pF (1KV)
C20: 470pF (100V)
C21: 2.2nF (100v)
C22: 470nF (63V)
C24: 1uF (63V)
C25: 220uF (35V)
C201: 220pF (100v)
C202: 220pF (100v)
C203: 22nF (100v)
C204: 22nF (100v)
C301: 47pF (100v)



DIODES

D1 D2 D3 D4: 1N4007
Lamp: LED or Pilot Lamp 12v

POTENTIOMETERS

VR101: A1M (LOUDNESS)
VR104: B250K (TREBLE)
VR105: B25K (MIDDLE)
VR106: A1M (BASS)

TUBES

V1: 12AX7 (With 9 Pin Socket - Chassis Mount)
V2: 12AX7 (With 9 Pin Socket - Chassis Mount)
V3: 12AU7 (With 9 Pin Socket - Chassis Mount)

TRANSFORMERS

POWER

Primary: 120v AC | 240v AC
Secondary: 180v (70mA) | 12,6V (1A)

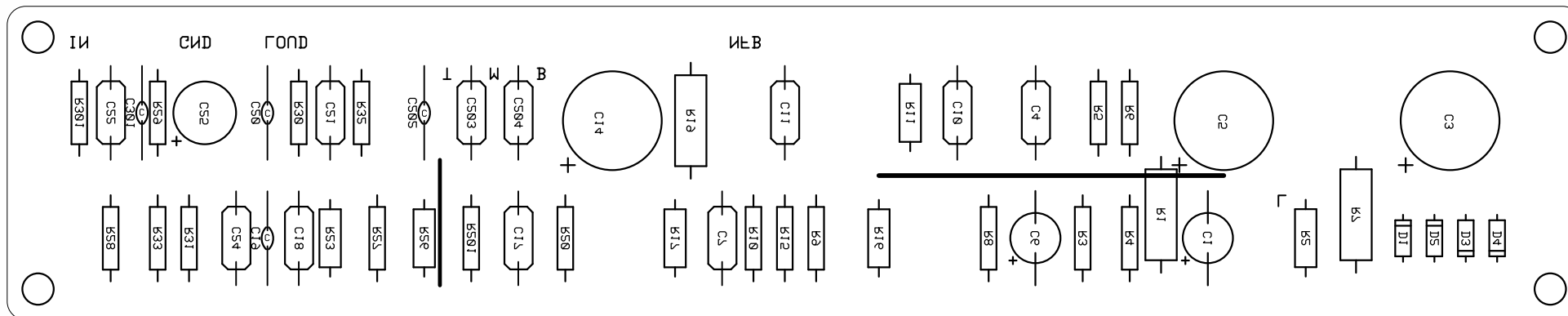
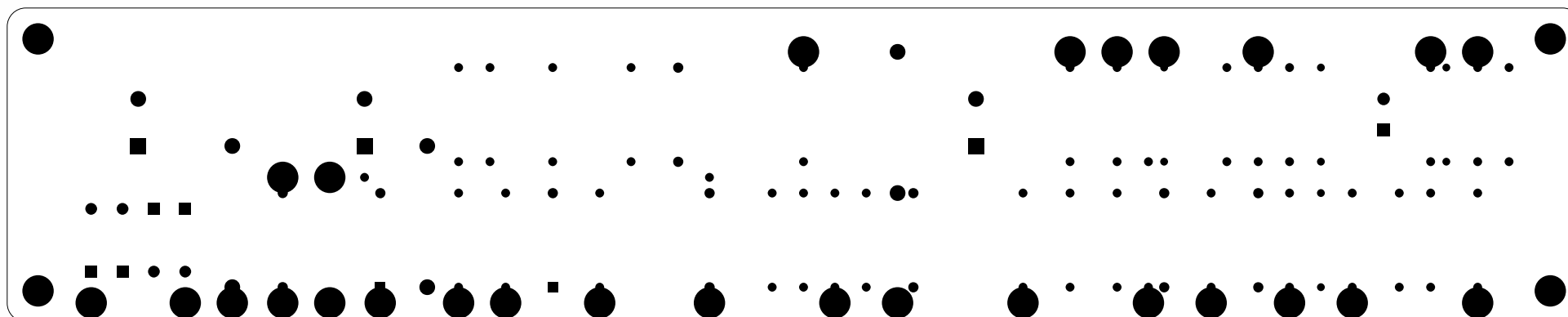
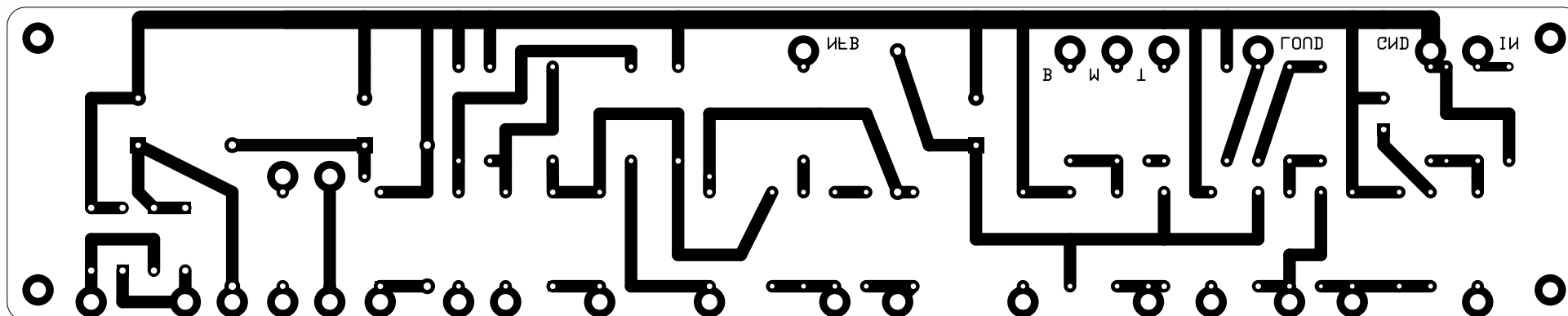
OUTPUT

Push-pull Transformer
Primary Impedance: 10K
Secondary Impedance: 8R - 16R

FUSE

F1: 500mA (127v) or 250mA (220v)

READY TO PRINT - TONER TRANSFER METHOD



READY TO PRINT - PHOTORESIST METHOD

