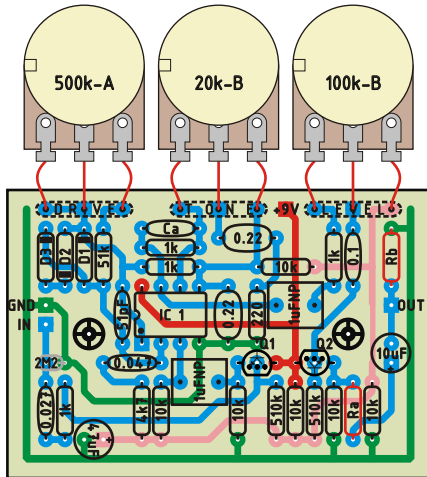
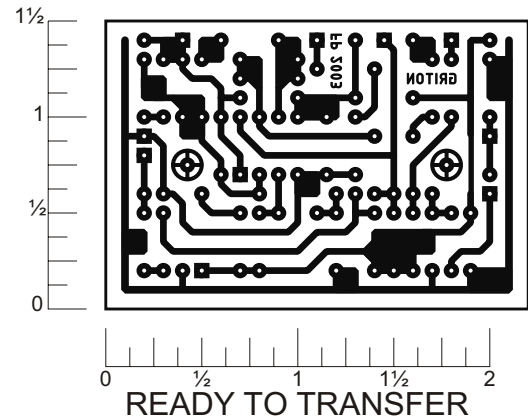


In this layout you can build either the Ibanez Tube screamer TS-9, TS-808 or the BOSS SD-1. These circuits are so similar that they can be constructed around the same printed circuit board. Most of the parts are common to both circuits, the ones that aren't are outlined red on the layout, use the parts list to substitute with the values for the circuit you choose to build. Off board components except for the potentiometers are not shown on the layout. Trademarks remain property of their owners.



LAYOUT



READY TO TRANSFER

Common parts

Resistors

6 - 10k
4 - 1k
2 - 510k
1 - 4k7
1 - 51k
1 - 220
1 - 2M2 (2.2M)

Pots

1 - 20k lin.
1 - 500k log.
1 - 100k lin.

Capacitors

2 - 1 μ F / NP
2 - 0.22 μ F Tant.
1 - 0.047 μ F
1 - 0.027 μ F
1 - 47 μ F
1 - 10 μ F
1 - 0.1 μ F
1 - 51pF

Transistors & ICs

2 - 2N3904
IC1 - 4558

TS-808 Parts

Ra - 100
Rb - 10k
Ca - Nothing*
*Leave empty

TS-9 Parts

Ra - 470
Rb - 100k
Ca - Nothing*
*Leave empty

Clipping Diodes

Symmetrical
D1 - 1N914*
D2 - 1N914*
D3 - Jumper

Asymmetrical

D1 - 1N914*
D2 - 1N914*
D3 - 1N914*

*Other diodes will work

Schematic

