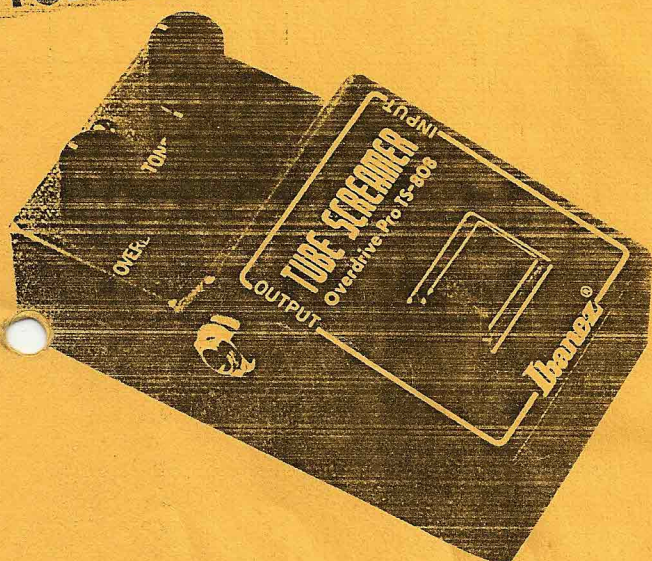
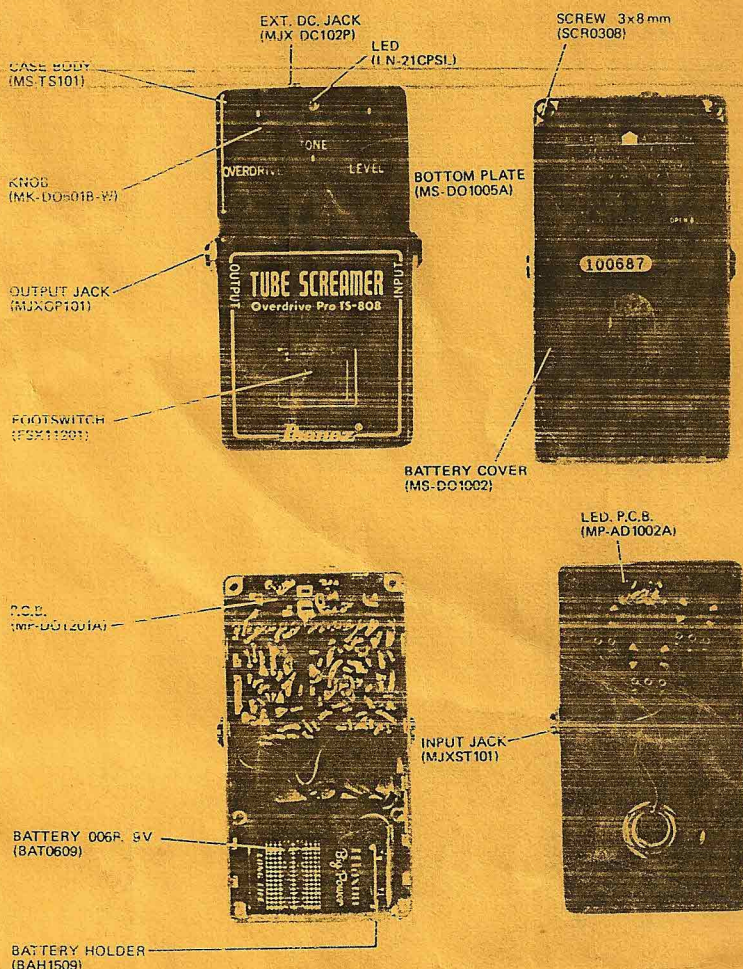


Ibanez SERVICE MANUAL

TS808 TUBE SCREAMER



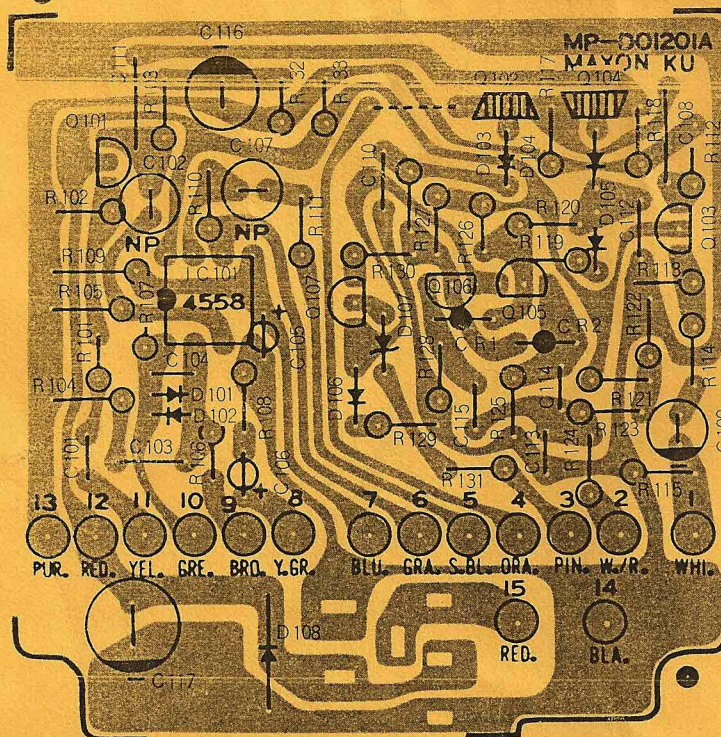
DISPOSITION OF PARTS



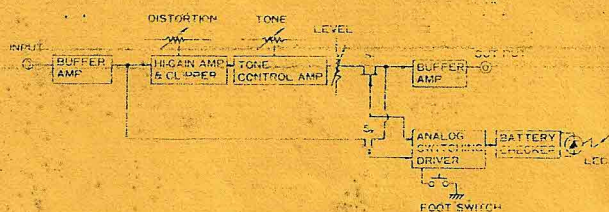
PARTS LIST

PARTS NAME	TYPE	PARTS NO.	REF. NO.
CASE BODY		MS TS101	
BOTTOM-PLATE		MS DO1005A	
BOTTOM-RUBBER		BR DO1003A	
BATTERY-COVER		MS DO1002	
BATTERY-RUBBER		BR DO1004A	
P.C.B.		MP DO1201A	
FOOTSWITCH	ELECTRIC	FSX11201	
INPUT JACK	MOLD STEREO	MJXST101	
OUTPUT JACK	MOLD OPEN	MJXOP101	
EXT. DC. JACK		MJXDC102P	
KNOB		MK-DO501B-W	
BATTERY	006P 9V	BAT0609	
BATTERY HOLDER	200mm	BAH2009	
SCREW	3x8mm	SCR0308	
LED	LN21CPSL	LN21CPSL	
LED P.C.B.		MP-AD1002A	
IC	RC4558	RC4558	IC101
Tr.	2SC1815BL	2SC1815BL	Q101, 103, 105, 106, 107
FET	2SK44SPC ₁	2SK44SPC ₁	Q102, 104
DIODE	RD4.7E8	RD4.7E8	D107
DIODE	WO3C	WO3C	D108
DIODE	MA150	MA150	D101 - 106
VARIABLE RESISTOR	16 ϕ 500KA	PMXB155R504ASC	
VARIABLE RESISTOR	16 ϕ 20KG	PMXB155R203GSC	
VARIABLE RESISTOR	16 ϕ 100KB	PMXB155R104BSC	

P.C.B.



BLOCK DIAGRAMS

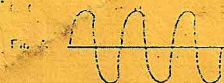


EFFECT	ON	OFF
NORMAL	OFF	ON

ADJUSTMENT PROCEDURES

WAVE FORM OF OUTPUT

- Put 30mV 1KHz sine wave into INPUT.
- Set OVERDRIVE controls, TONE controls and LEVEL controls fully CW.
- Make sure wave form as shown in Fig. A.



- Set OVERDRIVE controls fully CCW.
- Make sure wave form as shown in Fig. B.



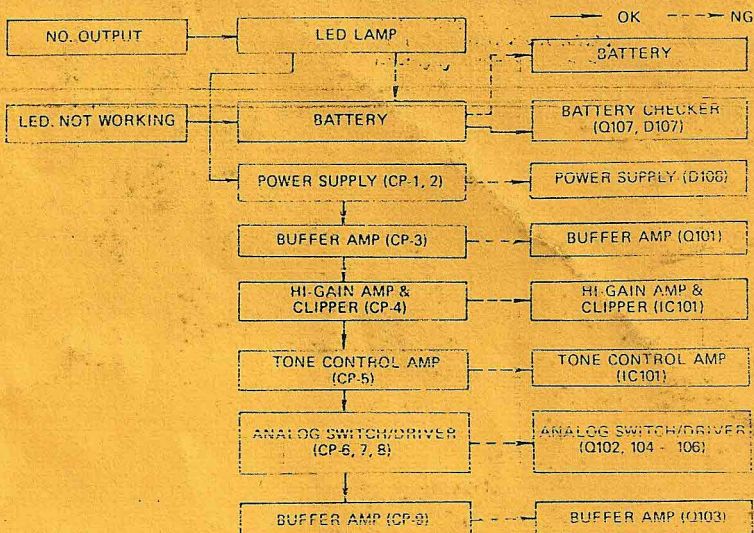
- Set OVERDRIVE controls fully CW and TONE controls fully CCW.
- Make sure wave form as shown in Fig. C.



- Set OVERDRIVE controls fully CCW.
- Make sure wave form as shown in Fig. D.



TROUBLE SHOOTING



REMARK: SIGNAL OF CP IS THE WAVE INPUTTING A SINE WAVE SIGNAL TO INPUT.

CP-1	CP-2	CP-3	CP-4	CP-5	CP-6	CP-7	CP-8	CP-9
V	V	V	V	V	V	V	V	V
5.5	0.5	0.5	0.5	0.5	0.5	0.5	0.5	0.5
5.5	0.5	0.5	0.5	0.5	0.5	0.5	0.5	0.5

SCHEMATIC DIAGRAMS

