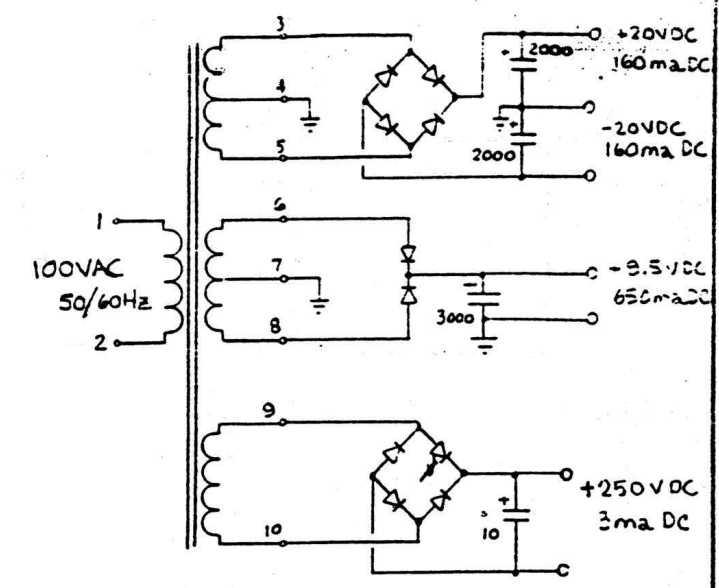
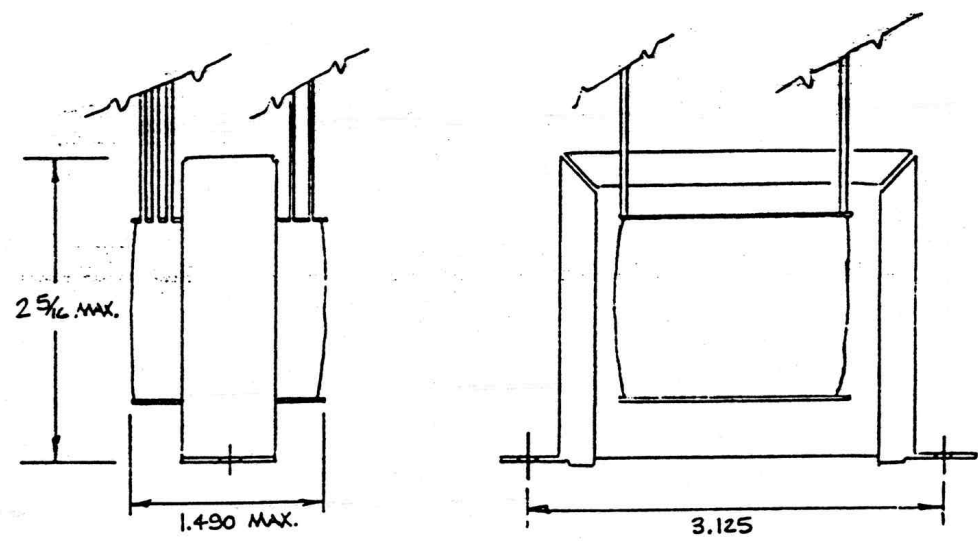


2. SPACE WIDTH 2/8 - 3/8



NOTES:

1. ALL DIMENSIONS IN INCHES.
2. 1500 V.R.M.S. HIPOT.
3. VACUUM IMPREGNATE.
4. EI-87 x 3/4"
5. VOLTAGE & CURRENTS IN R.M.S.
6. WIDTH DIMENSION 1.490 INCHES MUST NOT BE EXCEEDED.
7. UL LISTED COMPONENTS.
8. WIRE, UL-1007 OR SIMILAR
9. FRAME SPEC. MOD. WIDTH = 3/4"

| LEAD NO | COLOR  | LENGTH | TERMINATION     |
|---------|--------|--------|-----------------|
| 1       | WHITE  | 4.0    | STRIP/TIN .125" |
| 2       | BLACK  | 4.0    | "               |
| 3       | RED    | 6.5    | CUT ONLY        |
| 4       | YELLOW | 6.5    | "               |
| 5       | RED    | 6.5    | "               |
| 6       | GREEN  | 6.5    | "               |
| 7       | BLUE   | 6.5    | "               |
| 8       | GREEN  | 6.5    | "               |
| 9       | ORANGE | 15.75  | "               |
| 10      | GREY   | 15.75  | "               |



<http://www.adadepot.com>

|  |              |                       |
|--|--------------|-----------------------|
| XFMR MP-1 & MB-1 JAPAN 100VAC 50/60HZ<br>EI-87 x 3/4 (240074)          |              |                       |
| SCALE: 1:1   | APPROVED BY: | DRAWN BY DJI          |
| DATE:  |              | REVISED 11-30-90      |
| ADA SIGNAL PROCESSORS, INC.<br>7303 D EDGEWATER DR., OAKLAND, CA 94621 |              |                       |
|  |              | DRAWING NUMBER 8637 A |