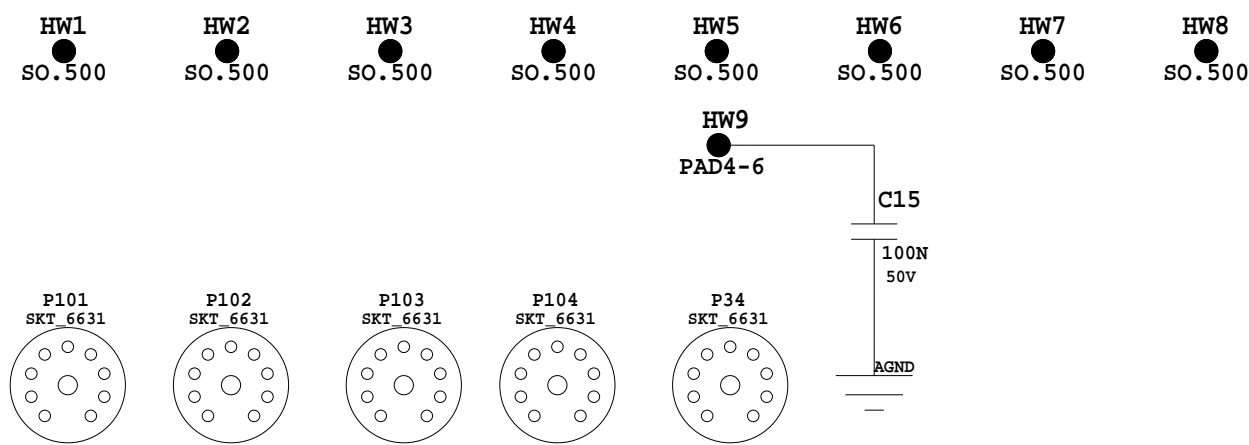
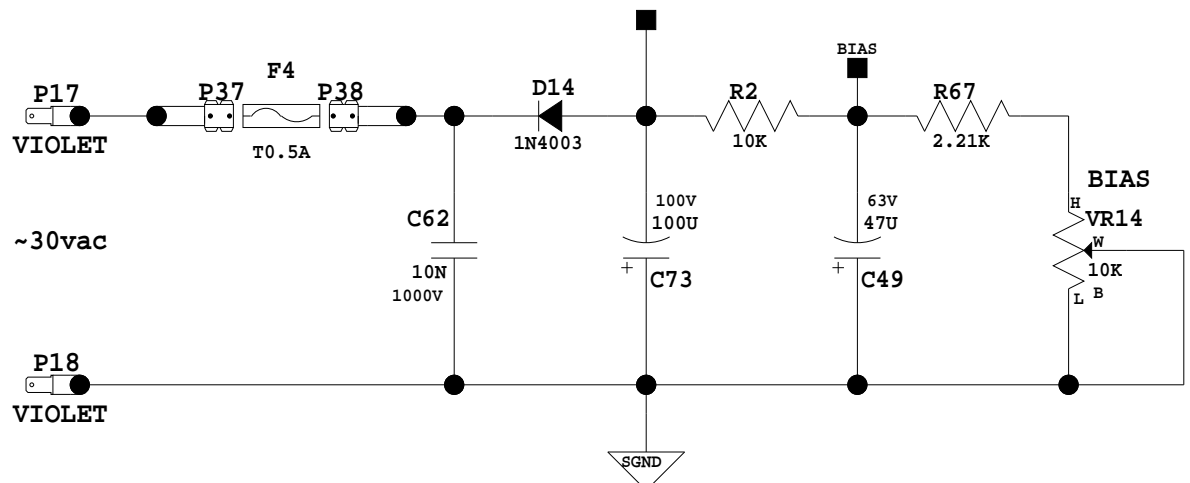
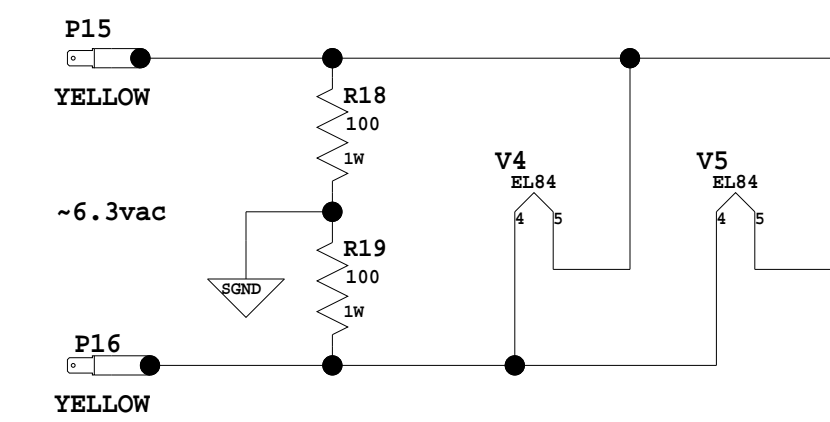
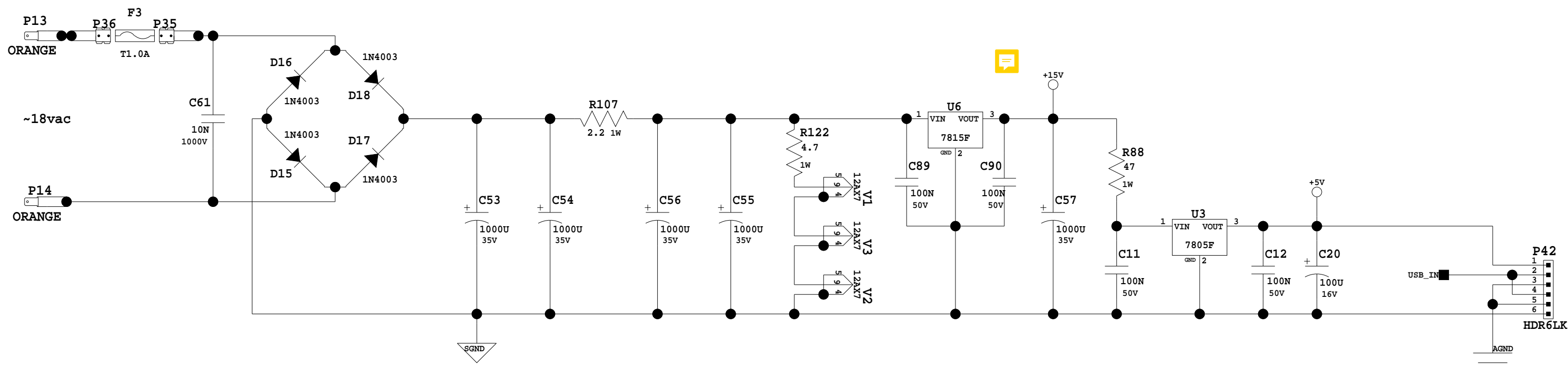
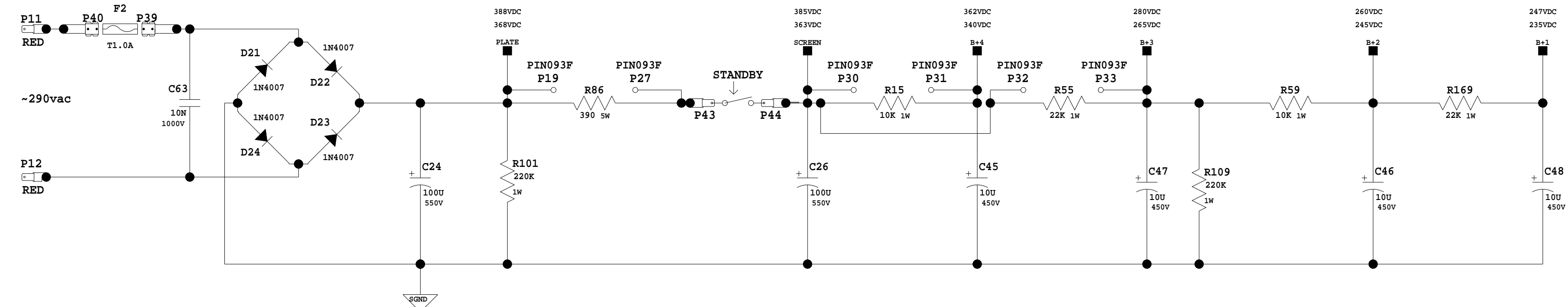
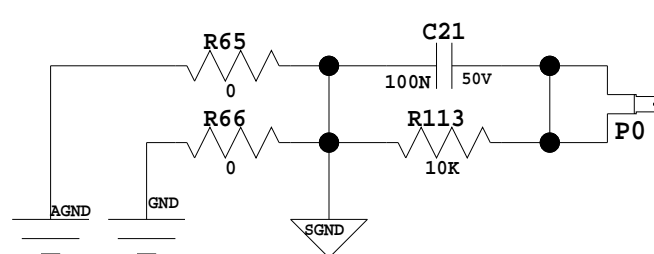
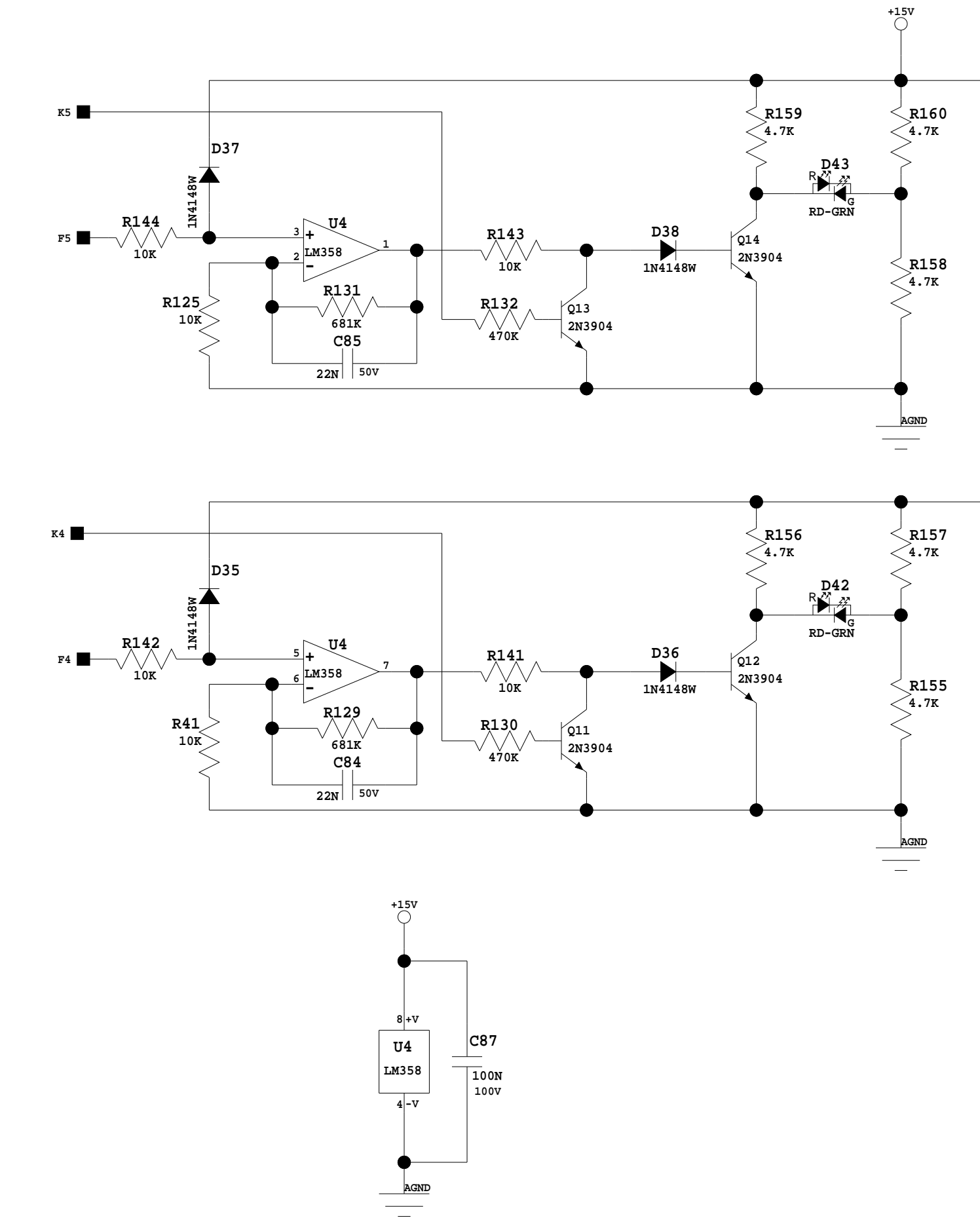


REV	Eng	Date:	Revision Description	ECN#
A	FJS	MAR 2014	ORIGINAL SCHEMATIC	N/A
B	FJS	08/22/14	PROTOTYPE MODIFICATIONS	N/A
C	FJS	11/21/14	PILOT RUN MODIFICATIONS	N/A
D				
E				
F				

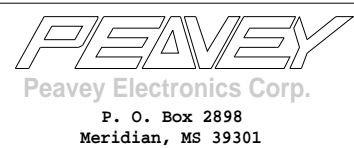
INDEX

[illegible]

Note: All thru hole Resistors are 1/4 Watt unless otherwise indicated.
All SMT 1206 Resistors are 1/4 Watt.
All SMT 0805 Resistors are 1/10 Watt.
Note Capacitor Values are indicated as Follows:
val P = pF (picoFarads) val * 10 exp-12
val N = nF (nanoFarads) val * 10 exp-9 (1N=1000pF, 100N=0.1uF)
val U = uF (microFarads) val * 10 exp-6



Company Proprietary Information



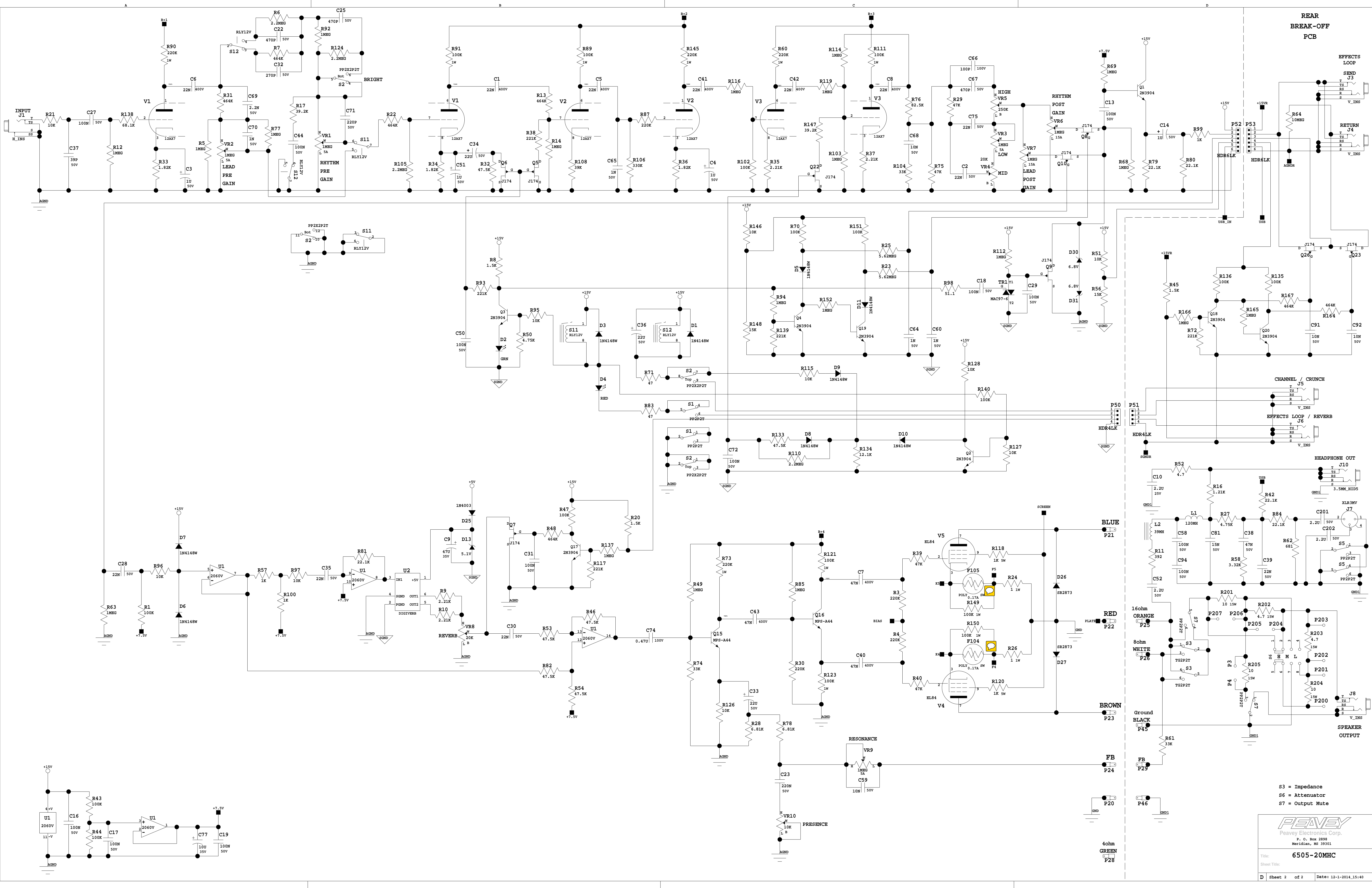
Product:

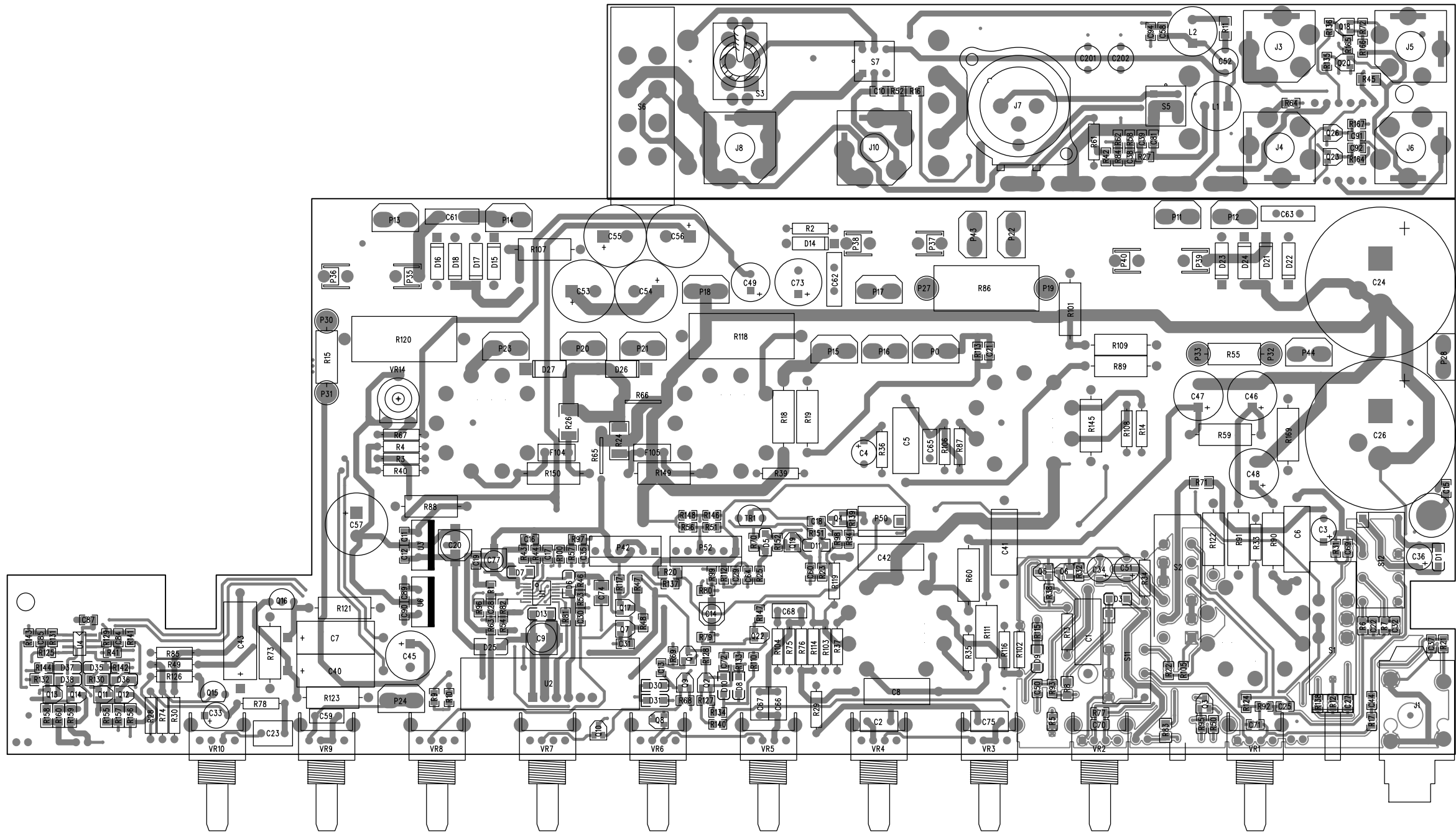
Title: 6505-20MHC

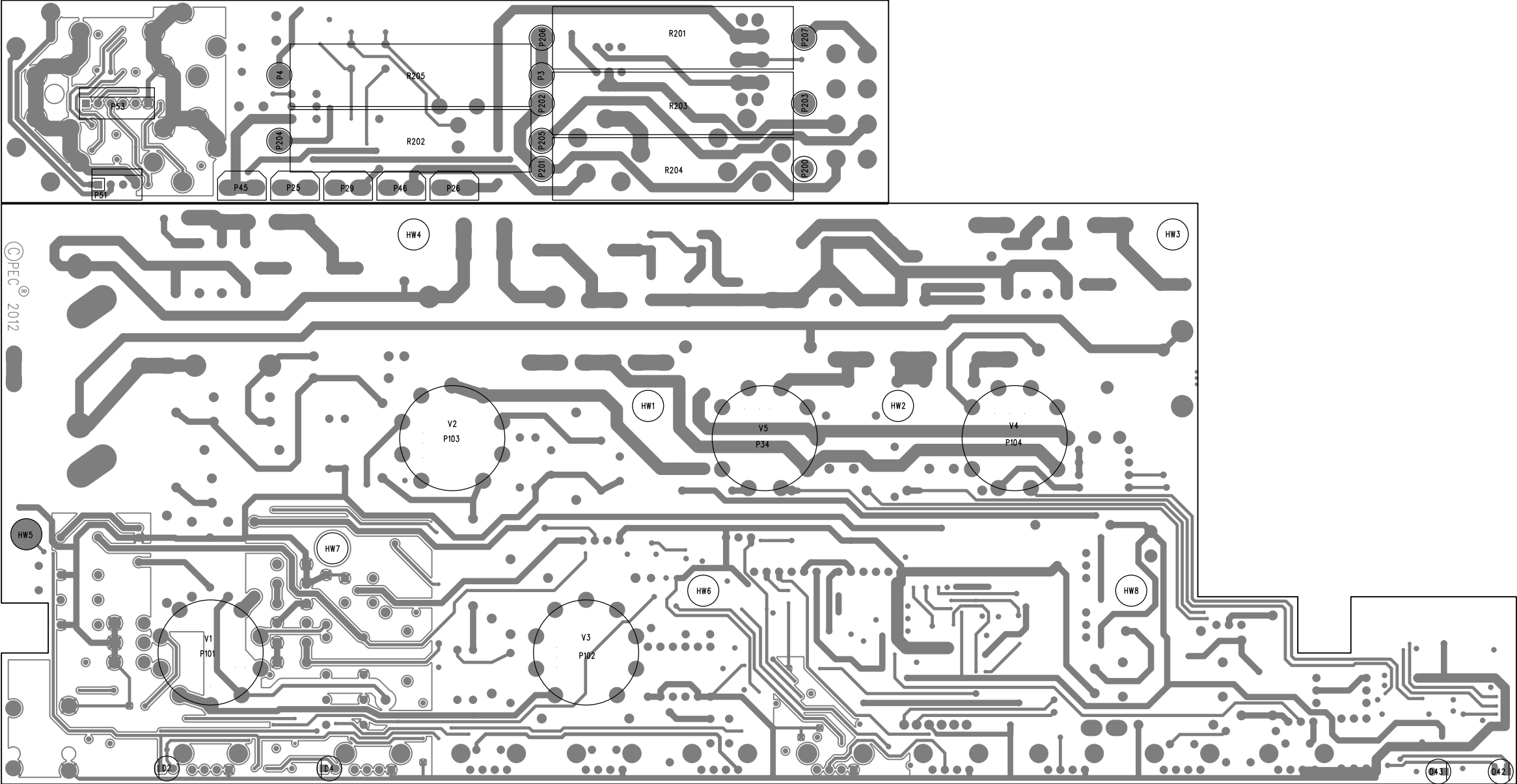
Project Number:			
Eng: PJS		Release Date:	
D	Sheet 1	of 2	Saved: 12-1-2014_15:40

Patents:

Copyright Peavey Electronics Corporation 2012.







BILL OF MATERIAL REPORT

REPORT DATE/TIME: 12/4/2014 1:30:33 PM

BOARD NAME: 6505+ Micro Head ASSEMBLY LEVEL NUMBER: 32206251

PROJECT NUMBER: P1200005 DESIGNER: FJE - 32206251

Qty.	Part #	Description	Reference Designators
2	30200012	47 1/4W 5% MF 1206	R71 R83
6	30200025	4.7K 1/4W 5% MF 1206	R155 R156 R157 R158 R159 R160
2	30200035	470K 1/4W 5% MF 1206	R130 R132
3	30200128	1.50K 1/4W 1% MF 1206	R8 R20 R45
1	30200136	392 1/4W 1% MF 1206	R11
16	30200174	10K 1/10W 1% MF 0805	R21 R41 R51 R95 R96 R97 R113 R115 R125 R127 R128 R141 R142 R143 R144 R146
1	30200179	51.1 1/10W 1% MF 0805	R98
3	30200188	1.00K 1/10W 1% MF 0805	R57 R99 R100
9	30200194	100K 1/10W 1% MF 0805	R1 R43 R44 R47 R70 R135 R136 R140 R151
13	30200195	1.00M 1/10W 1% MF 0805	R5 R12 R63 R68 R69 R77 R92 R94 R112 R137 R152 R165 R166
1	30200202	3.32K 1/10W 1% MF 0805	R58
6	30200205	47.5K 1/10W 1% MF 0805	R32 R46 R53 R54 R82 R133
1	30200241	4.70 1/10W 1% MF 0805	R52
2	30200251	4.75K 1/10W 1% MF 0805	R27 R50
5	30200256	22.1K 1/10W 1% MF 0805	R42 R79 R80 R81 R84
2	30200259	39.2K 1/10W 1% MF 0805	R17 R147
2	30200267	2.21K 1/10W 1% MF 0805	R9 R10

2	30200334	15.0K	1/10W 1% MF 0805	R56 R148
1	30200335	68.1K	1/10W 1% MF 0805	R138
2	30200338	5.62M	1/10W 1% MF 0805	R23 R25
1	30200339	10.0M	1/10W 1% MF 0805	R64
5	30200342	221K	1/10W 1% MF 0805	R38 R72 R93 R117 R139
1	30200376	12.1K	1/10W 1% MF 0805	R134
6	30200417	464K	1/10W 1% MF 0805	R7 R22 R31 R48 R164 R167
2	30200418	1	1W 1% MF 2512	R24 R26
1	30200438	1.21K	1/10W 1% MF 0805	R16
4	30200443	2.2M	1/10W 5% 0805	R6 R105 R110 R124
1	30200491	681	1/10W 1% 0805	R62
2	30200630	681K	1/10W 1% MF 0805	R129 R131
2	30210003	100	1W 5% MO AXL	R18 R19
2	30210005	22K	1W 5% MO AXL	R55 R169
6	30210008	220K	1W 5% MO AXL	R60 R73 R90 R101 R109 R145
1	30210011	47	1W 5% MO AXL	R88
1	30210015	4.7	1W 5% MO AXL	R122
7	30210017	100K	1W 5% MO AXL	R89 R91 R111 R121 R123 R149 R150
2	30210018	10K	1W 5% MO AXL	R15 R59
1	30210025	2.2	1W 5% MO AXL	R107
3	30240030	33K	1/4W 5% CF AXL	R61 R74 R104
4	30240031	47K	1/4W 5% CF AXL	R29 R39 R40 R75
4	30240036	220K	1/4W 5% CF AXL	R3 R4 R30 R87
1	30240037	330K	1/4W 5% CF AXL	R106
1	30240048	39K	1/4W 5% CF AXL	R108
1	30240130	82.5K-1/4W---	1%---MF--T&R	R76
3	30240145	2.21K	1/4W 1% MF AXL	R35 R37 R67

1	30240151	100K	1/4W	1% MF	AXL	R102
2	30241043	6.81K	1/4W	1% MF	AXL	R28 R78
2	30241050	10K	1/4W	1% MF	AXL	R2 R126
3	30241078	1.82K	1/4W	1% MF	AXL	R33 R34 R36
7	30241118	1M	1/4W	1% MF	AXL	R14 R49 R85 R103 R114 R116 R119
1	30241119	464K	1/4W	1% MF	T&R	R13
1	30250020	390	5W	5% FP	AXLH	R86
2	30250060	1K	5W	10% WW	AXLH SL	R118 R120
2	30250299	4.7	15W	10% WW	AXLH	R202 R203
3	30250301	10	15W	10% WW	AXLH	R201 R204 R205
2	30250305	0.17A	PTC (RESET) FUSE SMT			F104 F105
1	30300079	47UF	35V	20% EL	SMT6	C9
1	30300081	1UF	50V	20% EL	SMT4	C14
1	30300083	100UF	16V	20% EL	SMT6	C20
1	30300087	39PF	50V	5% NPO	0805	C37
1	30300089	220PF	50V	5% NPO	0805	C71
2	30300090	470PF	50V	5% NPO	0805	C22 C25
3	30300091	1000PF	50V	5% NPO	0805	C60 C64 C70
2	30300093	0.1UF	50V	10% X7R	0805	C58 C94
2	30300116	0.01UF	50V	5% X7R	0805	C91 C92
17	30300121	0.1UF	50V	5% X7R	0805	C11 C12 C13 C15 C16 C17 C18 C19 C21 C27 C29 C31 C44 C50 C72 C89 C90
1	30300131	10UF	35V	20% EL	SMT4	C77
6	30300148	0.022UF	50V	5% X7R	0805	C28 C30 C35 C39 C84 C85
1	30300153	2200PF	50V	10% NPO	0805	C69
1	30300154	0.015UF	50V	10% X7R	0805	C81
1	30300166	270PF	50V	10% X7R	0805	C32
1	30300171	0.047UF	50V	5% X7R	0805	C38

1	30300193	0.47UF 100V 10% X7R 1210	C74
1	30300249	0.1UF 100V 20% X7R 0805	C87
1	30300258	2.2UF 25V 10% X7R 0805	C10
3	30320099	0.01UF 1000V 80-20% Z5U	C61 C62 C63
3	30320105	0.047UF 400V 10% PES AXL	C7 C40 C43
3	30320181	22UF 50V 20% EL RAD	C33 C34 C36
3	30320184	2.2UF 50V 20% ELN RAD	C52 C201 C202
5	30320186	1000UF 35V 20% EL RAD	C53 C54 C55 C56 C57
3	30320261	1UF 50V 20% EL RAD	C3 C4 C51
1	30320269	100PF 100V 5% NPO RAD	C66
6	30320283	0.022UF 400V 10% PE AXL	C1 C5 C6 C8 C41 C42
2	30320573	100UF 550V 20% EL SNPH	C24 C26
1	30320623	47UF 63V 20% EL RAD	C49
1	30320624	100UF 100V 20% EL RAD	C73
4	30320676	10UF 450V 20% EL RADIAL	C45 C46 C47 C48
1	30330118	470PF 50V 5% PE RAD	C67
1	30330128	0.22UF 50V 5% PE RAD	C23
2	30330134	0.022UF 50V 5% PE RAD	C2 C75
2	30330155	0.01UF 50V 5% PE RAD	C59 C68
1	30330156	1000PF 50V 5% PE RAD	C65
1	30400318	7815F +15V INS TO-220F HOR	U6
1	30400322	7805F +5V INSUL TO-220F	U3
2	30402873	SR2873 2KV, 250MA DIODE	D26 D27
1	30409209	DIGITAL REVERB MODULE BTDR-2VM	U2
1	30418015	LM358 DUAL OPAMP SMT	U4
12	30418135	2N3904 NPN SOT23	Q1 Q2 Q3 Q4 Q11 Q12 Q13 Q14 Q17 Q18 Q19 Q20
9	30418139	J-174 P-JFET 30V SOT23	Q5 Q6 Q7 Q8

Q9 Q10 Q22 Q23
Q26

2	30418140	6.8V ZENER (SOD123)-SMT	D30 D31
1	30418261	1N4003 - SMT - SMA PKG	D25
13	30418328	1N4148W SWITCHING DIODE	D1 D3 D5 D6 D7 D8 D9 D10 D11 D35 D36 D37 D38
1	30418389	5.1V ZENER (SOD123)-SMT	D13
1	30418578	2060 QUAD OPAMP TSSOP1414	U1
1	30450034	RED LED T1 BULK	D4
1	30450035	GRN LED T-1 BULK	D2
2	30450037	BICOLOR LED R/G T1	D42 D43
2	30460044	MPS-A44 NPN TO92 RAD	Q15 Q16
1	30460097	MAC97-6 TRIAC TO-92 T&A	TR1
5	30464003	1N4003 200V 1A SI DIODE	D14 D15 D16 D17 D18
4	30464007	1N4007 1KV, 1A, SI DIODE	D21 D22 D23 D24
1	30500104	39MH RADIAL INDUCTOR	L2
1	30500105	120MH RADIAL INDUCTOR	L1
2	30600136	0 OHM 22GA JMPR AXL	R65 R66
2	30806623	EL84/6BQ5 POWER TUBE	V4 V5
3	30806629	12AX7 LOW MICROPHONIC	V1 V2 V3
5	30806631	TUBE SKT 9PIN CERAMIC	P34 P101 P102 P103 P104
6	30901714	FUSE CLIP, 5 X 20MM -T&A	P35 P36 P37 P38 P39 P40
8	30901859	STND .500 T4-40,SW,AL,ST	HW1 HW2 HW3 HW4 HW5 HW6 HW7 HW8
1	31190009	10K LIN.-HOR.PC MNT. TRIM POT	VR14
1	31190900	10KB SNGL 12MM HOR	VR10
2	31190903	20KB SNGL 12MM HOR	VR4 VR8
1	31190908	250KB SNGL 12MM HOR	VR5

4	31190910	1M5A	SNGL 12MM	HOR	VR1 VR2 VR3 VR9
2	31190911	1M15A	SNGL 12MM	HOR	VR6 VR7
2	31322251	SWITCH DPDT PP 3.3MM PC V			S5 S7
1	31322256	SWITCH 2XDPDT PP 3.3 PC H			S2
2	31322277	RELAY 12V DPDT .5A			S11 S12
1	31322289	SWITCH DPDT PP 3.3MM PC H			S1
1	31322328	SWITCH 2P3T SLIDE PC V			S6
1	31322476	SWITCH 2P2T TOGGLE			S3
1	31466222	JACK, MONO R/A 1/4" 6.5MM			J1
1	31466324	MXLR NC3MAV A-SER VERT			J7
5	31466542	STEREO HID JACK INSU			J3 J4 J5 J6 J8
1	31466603	JACK, 3.5MM PHONE TRS-SW HI-D			J10
16	33711818	PIN-F .093 FOR COMP MNTG			P3 P4 P19 P27 P30 P31 P32 P33 P200 P201 P202 P203 P204 P205 P206 P207
22	33716194	SPADE .250 PC MNT .093			P0 P11 P12 P13 P14 P15 P16 P17 P18 P20 P21 P22 P23 P24 P25 P26 P28 P29 P43 P44 P45 P46
2	33717015	4 HDR V SR .100" TIN LK			P50 P51
3	33717123	6 HDR V SR .100" TIN LK			P42 P52 P53

 END OF BILL OF MATERIAL REPORT
