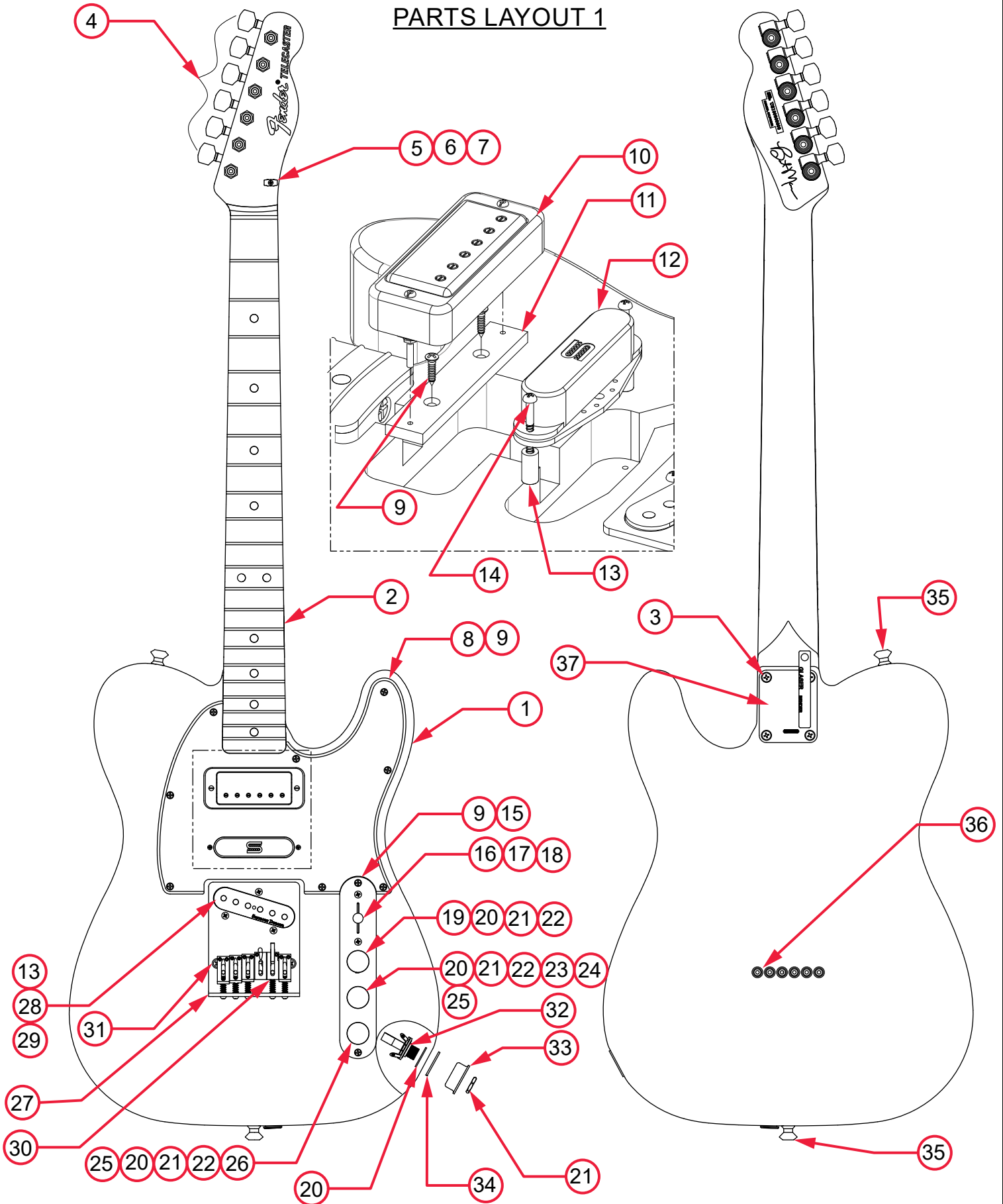


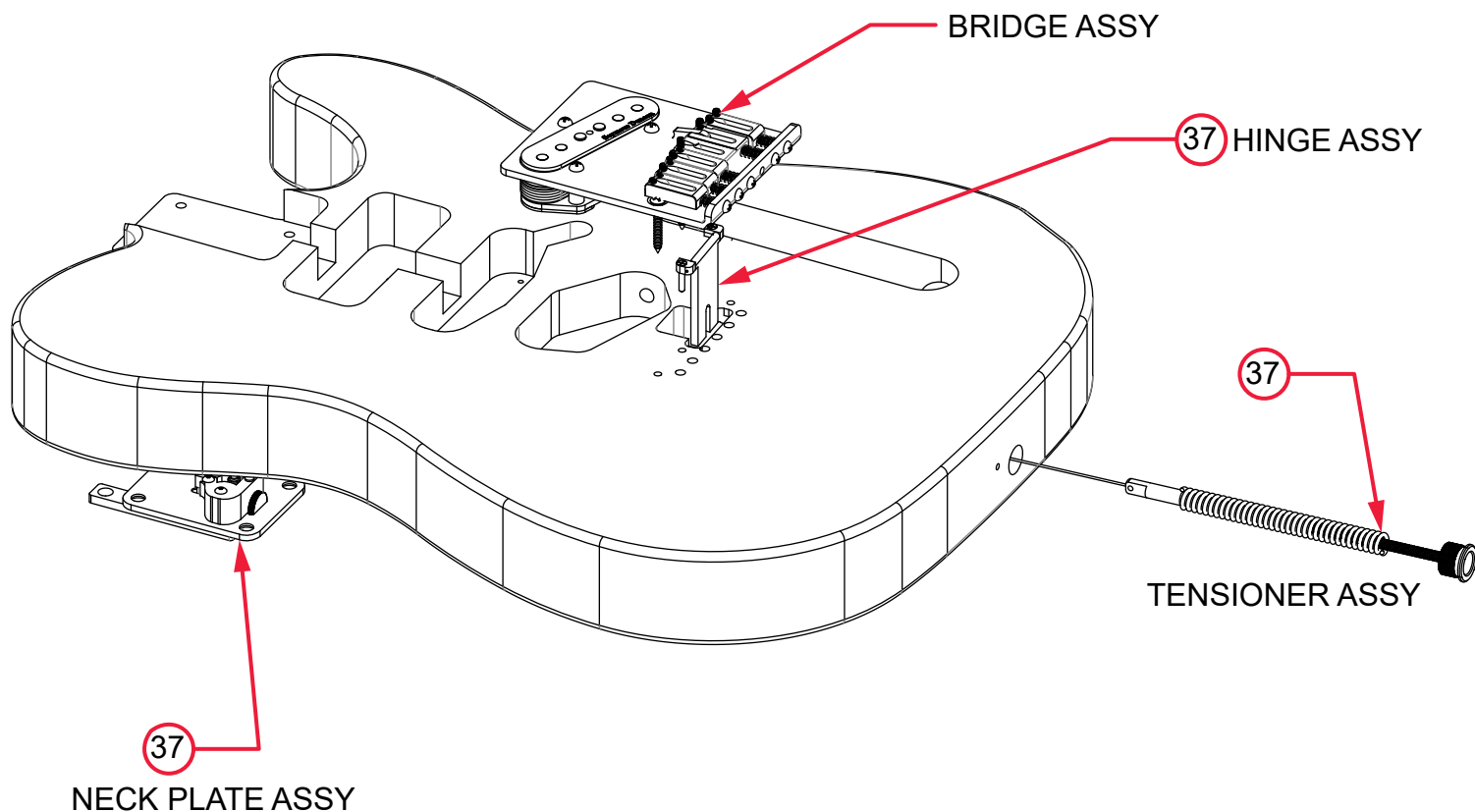
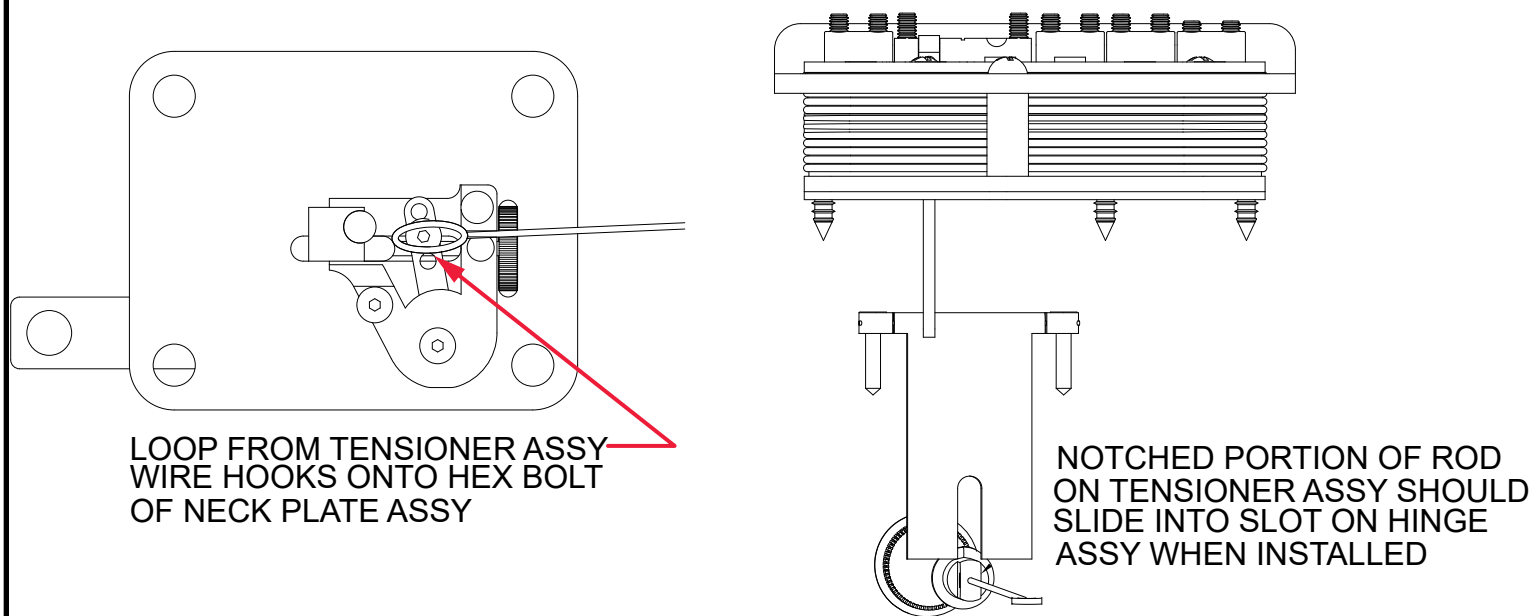
# BRENT MASON TELECASTER® (0115912793)

## PARTS LAYOUT 1



# **BRENT MASON TELECASTER® (0115912793)**

## **PARTS LAYOUT 2**



# **BRENT MASON TELECASTER® (0115912793)**

## **PARTS LIST**

<b>REF#</b>	<b>DESCRIPTION</b>	<b>PART NUMBER</b>
1	BODY BRENT MASON TELE PRIMER	7716329593
2	NECK ASSY BRENT MASON TELE MPL	7716335000
3	SCREW SMA 8X 1-3/4 OHP NI	0015636049
4	KEY SET SPZL TL CHROME W/HDWR	9280560115
5	STRING TREE VINTAGE NI W/HDWR	0992083000
6	SPACER STRING TREE 65 STRAT NYLON	0093999000
7	SCREW SMA 3 X 5/8 RHP NI	0011358049
8	PICKGUARD BRENT MASON TELE	7716330000
9	SCREW SMAB 4 X 1/2 OHP NI	0015578049
10	PICKUP MINI HUMB BRENT MASON TELE	7717705000
11	MINI HUMBUCKER MTG BRACKET DLX STYLE	7719554000
12	PICKUP SEYMOUR DUNC 80'S STYLE HOT STACK	7717706000
13	TUBING LATEX CUT .550 X 1/8	0039410000
14	SCREW 4 X 1-1/4 WOOD RHP NI	0027035049
15	PLATE CONTROL TELE 3-HOLE GOLD	7717848000
16	SWITCH 3-WAY LEVER	0992041000
17	SCREW MACH 6-32 X 5/8 RH NI	0994925000
18	KNOB PICKUP SWITCH BLK	0994939000
19	CONTROL 250K 10% AUDIO METAL	0990831000
20	WASHER LOCK INTL 3/8 X .687	0016436049
21	NUT HEX 3/8-32 X 3/32 TK NI	0016352049
22	KNOB VINTAGE TELE GOLD	0992056200
23	POT MINI 500K SOLID SHAFT TAPER C/S	0091635000
24	CAPACITOR .05µF CD 100V 20%	0015552049
25	WASHER FLAT 3/8 X .614 NI	0031153049
26	SWITCH POT SOLID SHAFT PUSH PULL 250K	7705104000
27	BRIDGE ASSY BRENT MASON NO P/U	7718075000
28	PICKUP S.DUNCAN VINT STACK TELE BRIDGE	7717707000
29	SCREW MACH 6-32 X 3/4 RHP STL NI	0021149000
30	SADDLE BRENT MASON B-BENDER	7717820000
31	SCREW SMA 6 X 1 OHP NI	0037952049
32	JACK PHONE OPEN CIRCUIT 11	0021956049
33	FERRULE JACK STD TELE CHROME	0021452000
34	RETAINER JACK NI PLATE TELE	0010355069
35	DUNLOP SRAPLOK BUTTON	7718154000

\*= NOT PICTURED IN DIAGRAM



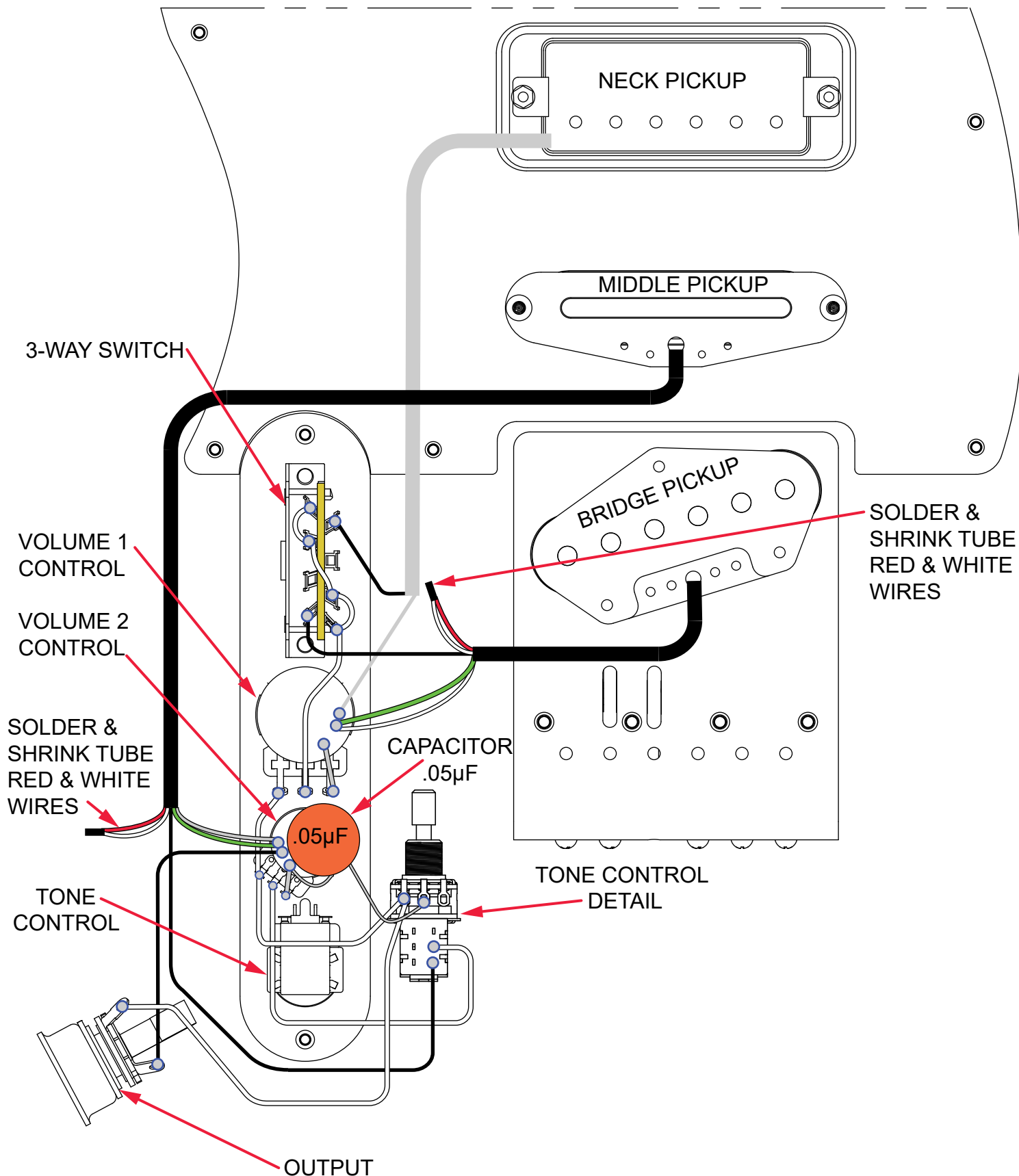
**BRENT MASON TELECASTER® (0115912793)**

[illegible]

\*= NOT PICTURED IN DIAGRAM

# BRENT MASON TELECASTER® (0115912793)

## WIRING ASSEMBLY

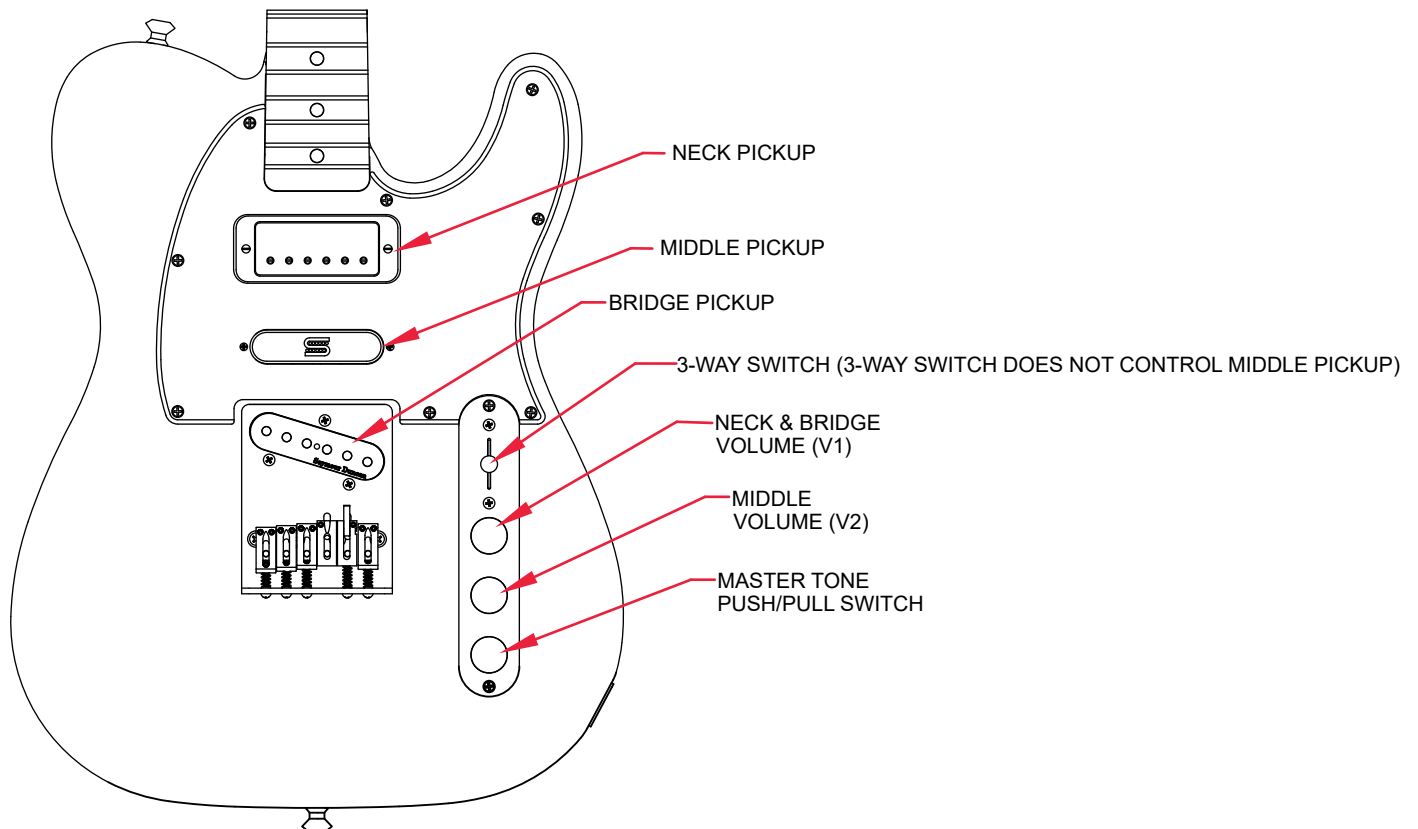


# BRENT MASON TELECASTER® (0115912793)

## SWITCH AND CONTROL FUNCTION

3 WAY SWITCH POSITION			
			← 3 WAY SWITCH POSITION
			← NECK PICKUP VOLUME = (V1)
			 PUSH/PULL SWITCH UP = MIDDLE PICKUP OFF
			← BRIDGE PICKUP VOLUME = (V1)
	PICKUP IS ON	INDICATES POSITION OF 3 WAY SWITCH 	
	PICKUP IS OFF		

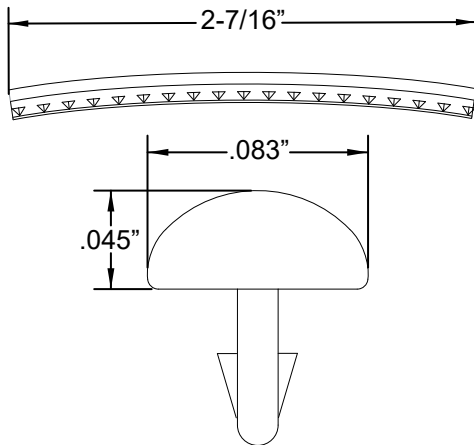
3 WAY SWITCH POSITION			
			← 3 WAY SWITCH POSITION
			← NECK PICKUP VOLUME = (V1)
			 PUSH/PULL SWITCH DOWN = MIDDLE PICKUP ON
			← BRIDGE PICKUP VOLUME = (V1)
	PICKUP IS ON	INDICATES POSITION OF 3 WAY SWITCH 	
	PICKUP IS OFF		



# BRENT MASON TELECASTER® (0115912793)

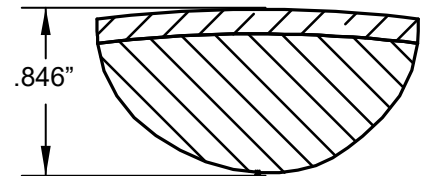
## ADDITIONAL SPECIFICATION DETAIL

FRET SIZE: VINTAGE  
(FRET DIMENSIONS ARE BEFORE INSTALLATION)

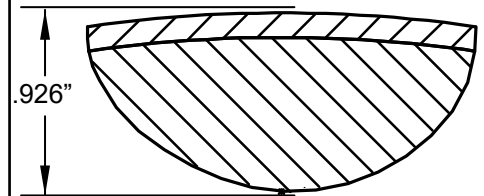


PLEASE NOTE: AS EACH NECK IS SANDED & FINISHED BY HAND, THICKNESS DIMENSIONS MAY VARY SLIGHTLY FROM THOSE SHOWN.

NECK PROFILE: BRENT MASON

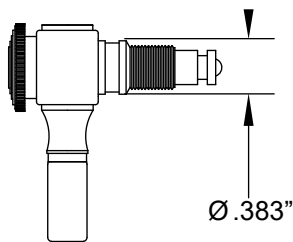


1ST FRET PROFILE

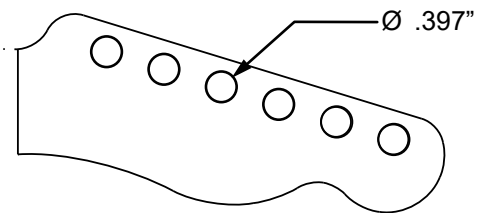


12TH FRET PROFILE

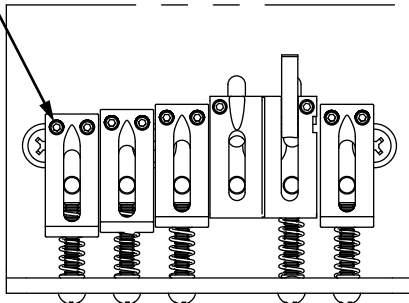
TUNING MACHINE SET W/HDWR P/N 9280560115  
OUTER SHAFT DIAMETER .383"



TUNING MACHINE THRU-HOLE  
INNER DIAMETER .397"

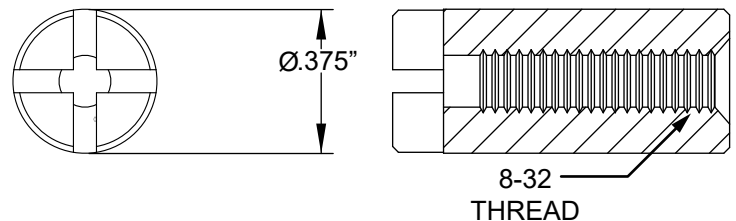


HEX  
SET SCREW



HEX KEY WRENCH: P/N 0050919000

TRUSS ROD NUT P/N 0058171000



LOGO: 69 TELE  
APPLIED UNDER FINISH



### PICKUP SPECIFICATIONS

POSITION	MAGNETS	DC RESISTANCE	POLARITY
NECK	CERAMIC	6.0 - 6.6Ω	NORTH SOUTH
MIDDLE	CERAMIC	12.7 - 13.3KΩ	NORTH
BRIDGE	ALNICO 5	17.7 - 18.3KΩ	NORTH

