

Nite Club

By Gary Willis
as Performed by Tribal Tech

Rhythm Section Sheet

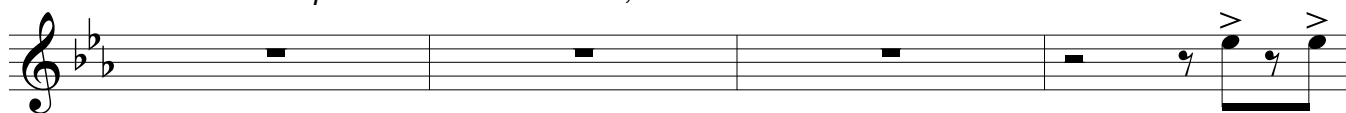
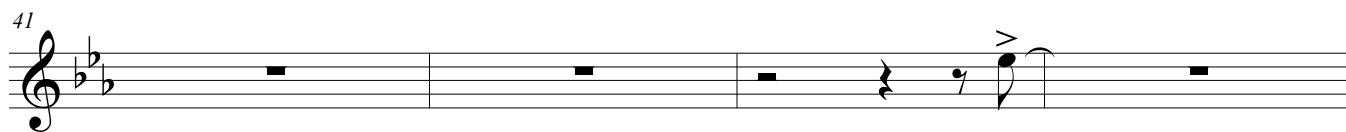
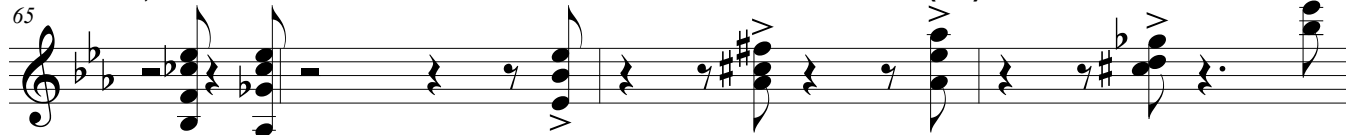
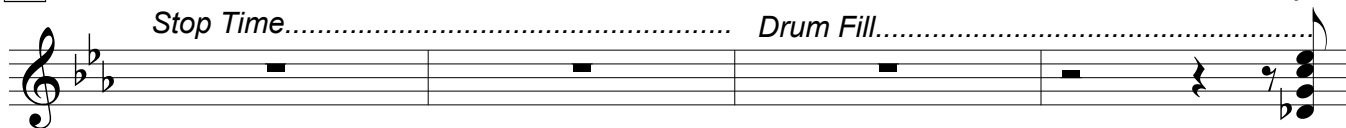
Scribe: Jon Blanchette

Guitar

This sheet music for guitar is written in E-flat major (three flats) and 4/4 time. It consists of ten staves of music, each with a measure number on the left and a chord symbol above the staff. The notes are primarily eighth and quarter notes, often beamed together. The first staff (measure 1) has chords E-flat7(13), G7(b13), and A-b7. The second staff (measure 5) has G7(b13), A-b9, and E-flat7(b13). The third staff (measure 9) has G7(b13), A-b7, and E-flat7(b13), with a 'guitar fill...' indicated in the third measure. The fourth staff (measure 13) has G7(b13), A-b9, and E-flat7(b13). The fifth staff (measure 17) is marked with a box containing the letter 'A' and has chords G7(#5), A-b7, B/D-b, and B-b7(#5). The sixth staff (measure 21) has B13, E-b13, C#m7, and A7(#5). The seventh staff (measure 25) has G/A, A/B, C#m7/A-b, and A13. The eighth staff (measure 29) has a first ending bracket over measures 29-32 with chords G/A, B-b/C, A/B, and B-b7(#5). The ninth staff (measure 33) has a second ending bracket over measures 33-36 with chords G/A, B-b/C, A/B, B-b7(#5), and B-b7(#11). The piece ends with a double bar line at the end of the final measure.

Measures and Chords:

- Measure 1: E \flat 7(13), G7(b13), A \flat 7
- Measure 5: G7(b13), A \flat 9, E \flat 7(b13)
- Measure 9: G7(b13), A \flat 7, E \flat 7(b13) (guitar fill...)
- Measure 13: G7(b13), A \flat 9, E \flat 7(b13)
- Measure 17 (Section A): G7(#5), A \flat 7, B/D \flat , B \flat 7(#5)
- Measure 21: B13, E \flat 13, C#m7, A7(#5)
- Measure 25: G/A, A/B, C#m7/A \flat , A13
- Measure 29 (First Ending): G/A, B \flat /C, A/B, B \flat 7(#5)
- Measure 33 (Second Ending): G/A, B \flat /C, A/B, B \flat 7(#5), B \flat 7(#11)

B**A \flat 7***Repeat B section after D.C, Take Coda***A \flat 7****E \flat 7****E \flat 7****F9****A \flat /B \flat** **A \flat /B \flat** **B \flat 7(b13)****E \flat 7(13)****C****G7(b13)****A \flat 7****F \sharp 13****E \flat 7(13)****G7(b13)****A \flat 7****A \flat 9****E \flat 7(13)****G7(b13)****A \flat 7****B \flat 13****E \flat** **G7(b13)****A \flat 7****F \sharp 7(13)****B \flat 7(9)****F7(\sharp 9)****E \flat m7****69****E \flat 7(b13)**

Nite Club

D Solos **G7(b13)** **A^b7** **E^b7(b13)**

77 **G7(b13)** **A^b9** **E^b7(b13)**
Cue m.81 or Repeat 8X

81 **G7(b13)** **A^b9** **B/O^b** **D^b7**

85 **F[#]7** **B7** **B^b7(b13)** **E^b7**
Repeat 4x

89 **A^b7** **A^b7** **E^b7**

93 **E^b7**

97 **F9**

101 **A^b/B^b** **B^b7(b13)** **E^b7** **F[#]7** **A^b7** **F[#]7** **E^b7**
After last solo... D.C. al Coda

105 **A9** **G9** **A9** **A9** **G9** **A9** **F[#]7(13)** **B^b7(9)** **F7(#9)** **B^b7(b13)**
E^bm7

109

