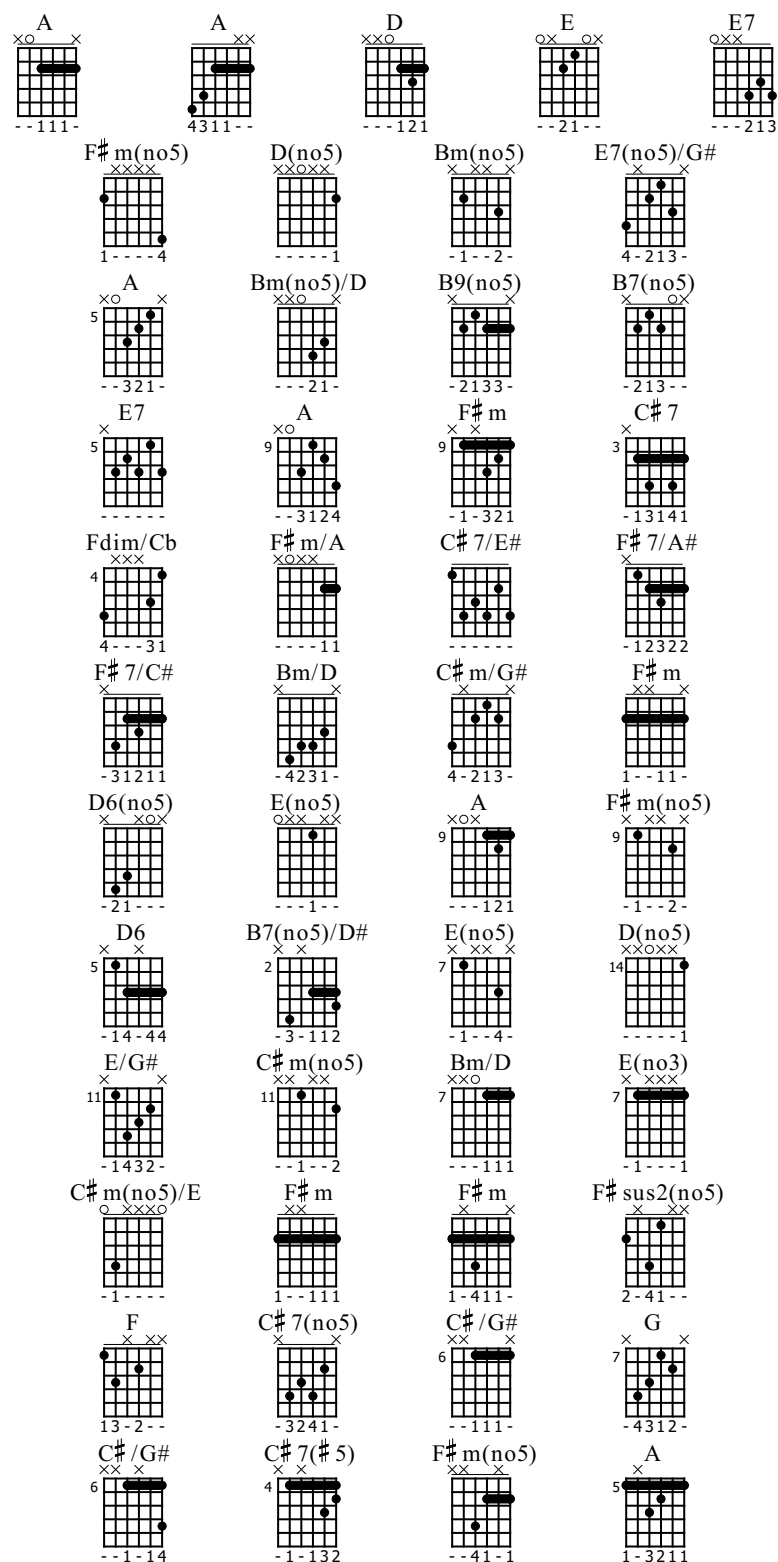


# Gavotte A

solo for six-string guitar

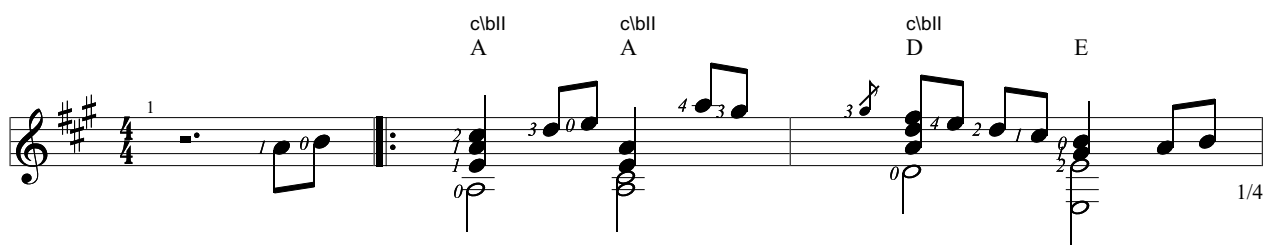
Music by Alehandrich



Standard tuning

♩ = 120

N-Gt



E7      II      F#m(no5)      D(no5)      C#BII      Bm(no5)      E7(no5)/G#

V      I      c#BII

1      A      Bm(no5)/D#9(no5)      B7(no5)      E      2      A

c#BII      D      V      IX      c#bIX      F#m      c#bIV      IV      Fdim/Cb

A      E7      A      F#m

II      c#BII      A      C#7/E#F#m(no5)F#7/A#      Bm(no5)F#7/C#      Bm/D      A      C#m/G#F#m

D6(no5)      E(no5)      c#BII      IX

A      F#m(no5)      D6B7(no5)/D#(no5)      c#bIX      V      VI      VII      XIV

XII D(no5) c/bXI E/G# IX C#m(no5) c/bIX\_ F#m Bm/D VII E(no3) II C#m(no5)/E c/bII F#m

c/bII F#m F#sus2(no5) C/bII F E

C#7(no5) c/bVI c/bVII c/bIX F#m c/bIX c/bVII c/bVI C#/G#

c/bVII G c/bVI C#/G# c/bIV C#7(#5) c/bII F#m(no5)

c/bIX VII V IV

$\text{♩} = 120 \text{ rall.}$

XII VII c/bVI IX c/bIX

rall. -----  $\text{♩} = 70$   $\text{♩} = 70$  accel. -----  $\text{♩} = 120$

*f*

2. <sup>43</sup>

1 4 1 2 4

3

C\BV  
A

<sup>46</sup>