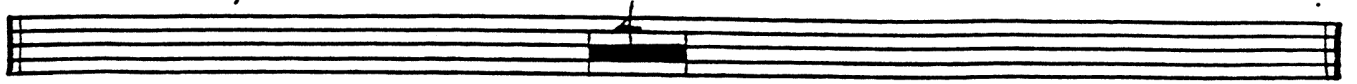


CHILDRENS' SONG
(THAT OLD MAN)

TH. MONK

13

(INTRO: DRUMS)



E E⁶/_{D#} E⁷/_D C#⁷ F#⁷ (C#⁷ F#⁷ C#⁷)

F#- F#⁶/_F F#⁷/_E F#⁶/_{D#} B⁷(b9) B⁷(b9) C C#⁷ /