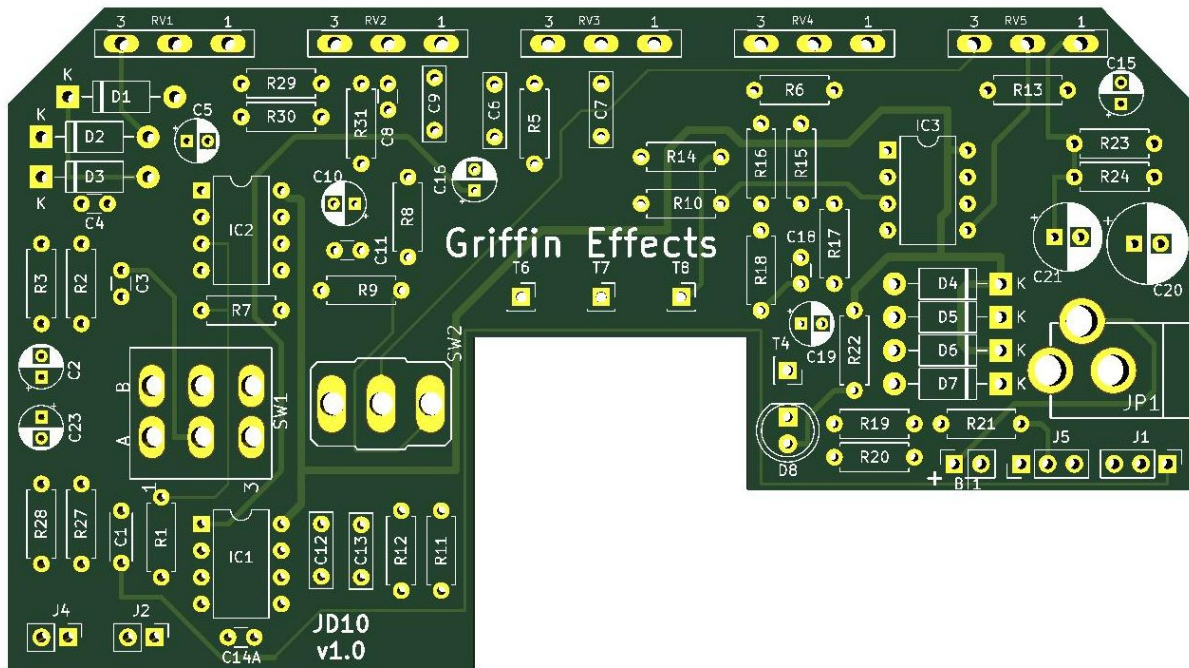




## JD10 Emulation Project

Version 1.0

The JD10 Emulation project is a reproduction of the Award Session/Morley JD10. A live/recording guitar amp emulator, humbucker emulator, preamp, overdrive, EQ, headphone amp, and line driver.



Designed to fit into a 1590BB size enclosure and long pin potentiometers but you can use whatever potentiometers you want. A space was left out in the middle if you wanted to mount the bypass switch more towards the center like the original. We also included pads to bypass the pedal like the original or you can true bypass it. See the wiring diagrams section.

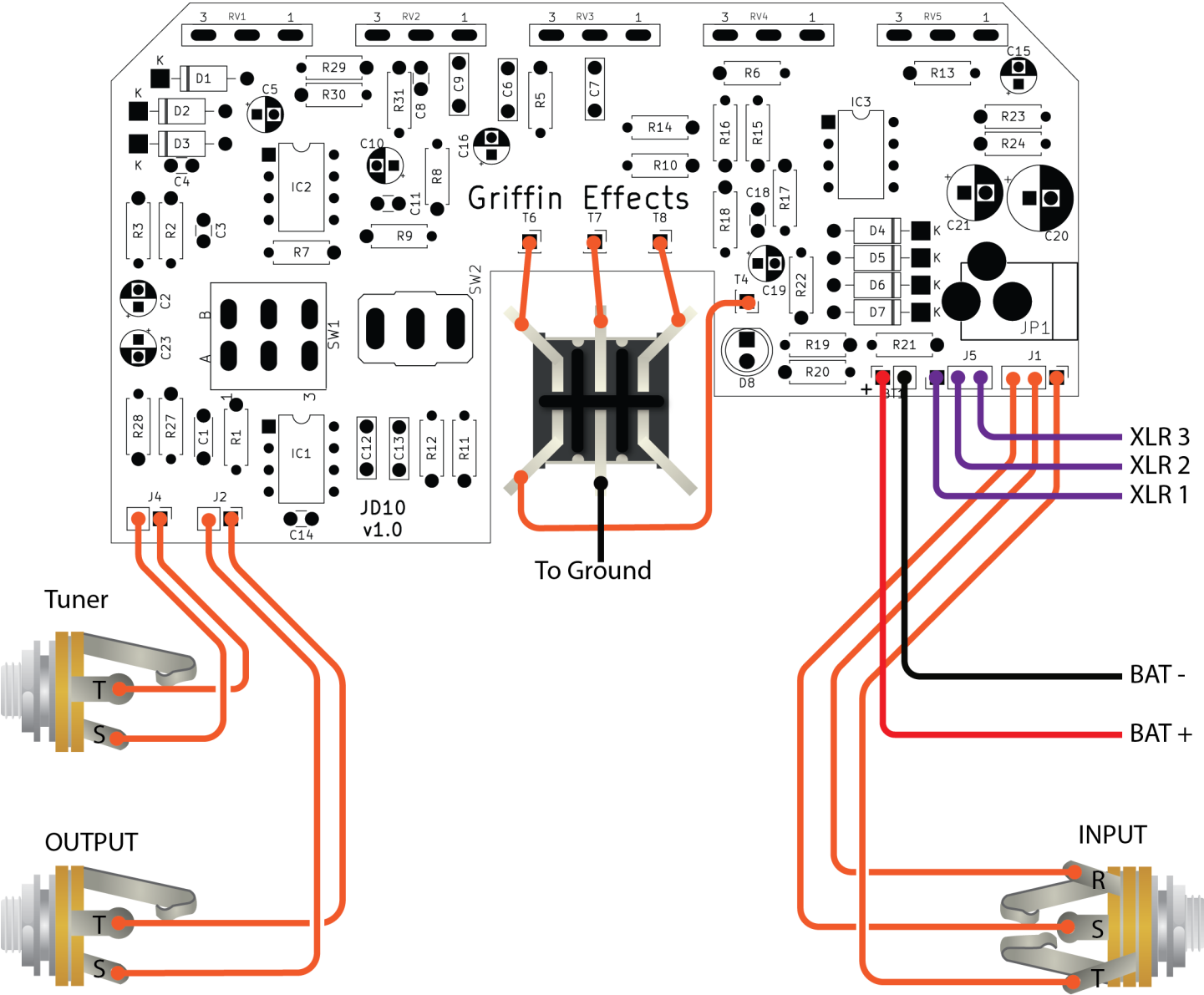
Board dimensions: 113mm\*63mm

## Parts List:

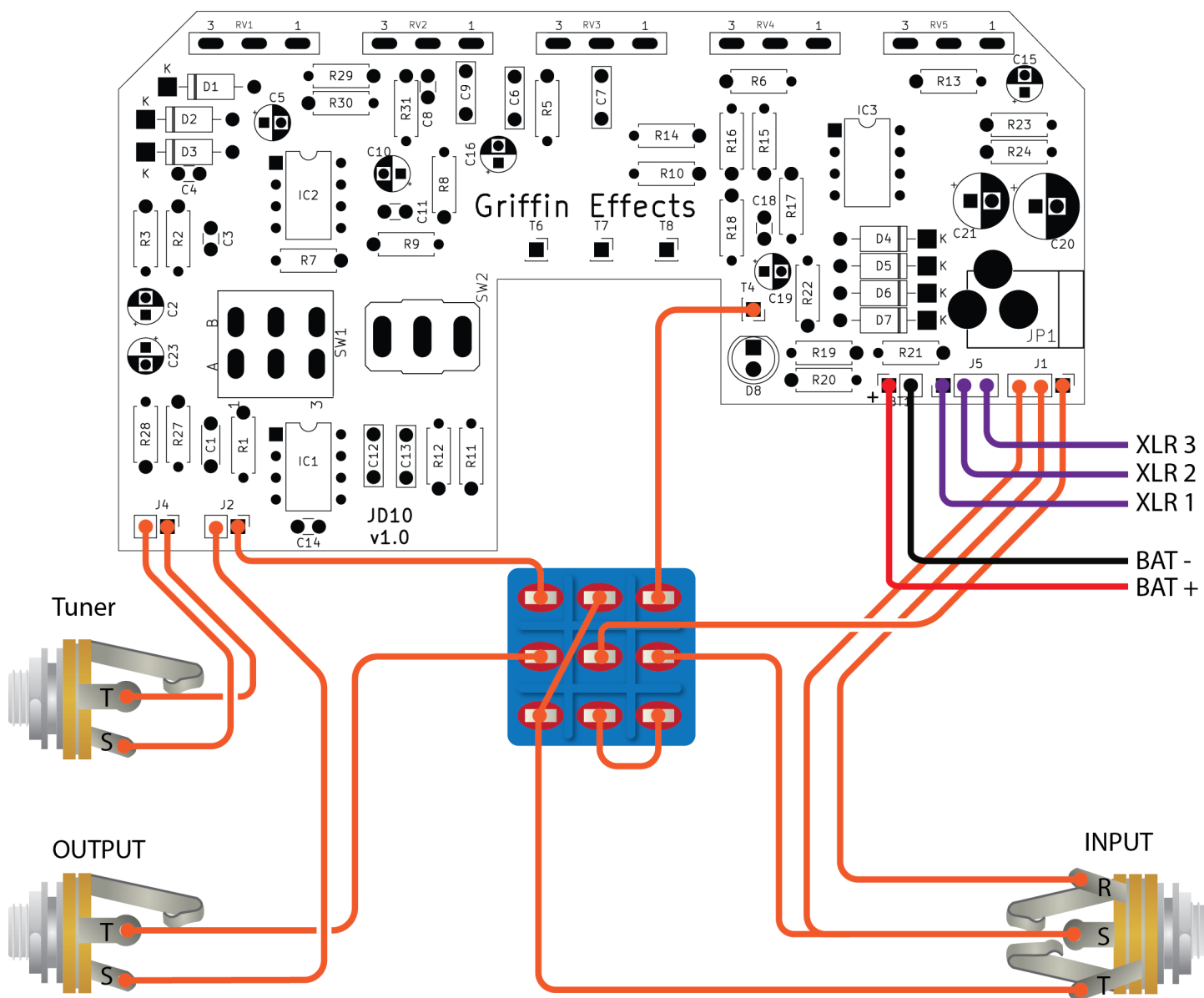
R1	1M	
R2	4K7	
R3	100E	
R5	100K	
R6	10K	
R7	1M	
R8	10K	
R9	47K	
R10	10K	
R11	18K	
R12	18K	
R13	680E	
R14	680E	
R15	18K	
R16	18K	
R17	150K	
R18	22K	
R19	10K	
R20	680E	
R21	680E	
R22	10K*	
R23	18K	
R24	22K	
R27	680E	
R28	10K	
R29	6K8	
R30	1M	
R31	10K	
RV1	250K-A	Drive
RV2	250K-A	Treble
RV3	250K-A	Middle
RV4	250K-A	Bass
RV5	250K-A	Level
SW1	DPDT	Classic/Rock
SW2	SPDT	G12T Speaker Sim
T4	LED Pad	
C1	470pF	Capacitor_Ceramic_Disc
C2	10uF	Capacitor_Polarized Electrolytic
C3	.022uF	Capacitor_Ceramic Disc
C4	470pF	Capacitor_Ceramic Disc
C5	10uF	Capacitor_Polarized Electrolytic
C6	.0047uF	Capacitor_Film
C7	.047uF	Capacitor_Film
C8	220pF	Capacitor_Ceramic Disc
C9	0.1uF	Capacitor_Film
C10	10uF	Capacitor_Polarized Electrolytic
C11	220pF	Capacitor_Ceramic Disc
C12	.0047uF	Capacitor_Film
C13	.0033uF	Capacitor_Film
C14	.001uF	Capacitor_Ceramic Disc
C15	10uF	Capacitor_Polarized Electrolytic
C16	10uF	Capacitor_Polarized Electrolytic
C18	.022uF	Capacitor_Ceramic Disc
C19	10uF	Capacitor_Polarized Electrolytic
C20	470uF	Capacitor_Polarized Electrolytic 35v
C21	1000uF	Capacitor_Polarized Electrolytic 16v
C23	10uF	Capacitor_Polarized Electrolytic
D1	1N4002	Diode
D2	1N4002	Diode
D3	1N4002	Diode
D4	1N4002	Diode
D5	1N4002	Diode
D6	1N4002	Diode
D7	1N4002	Diode
D8	LED	5.0mm
IC1	TL072	
IC2	TL072	
IC3	TL072	

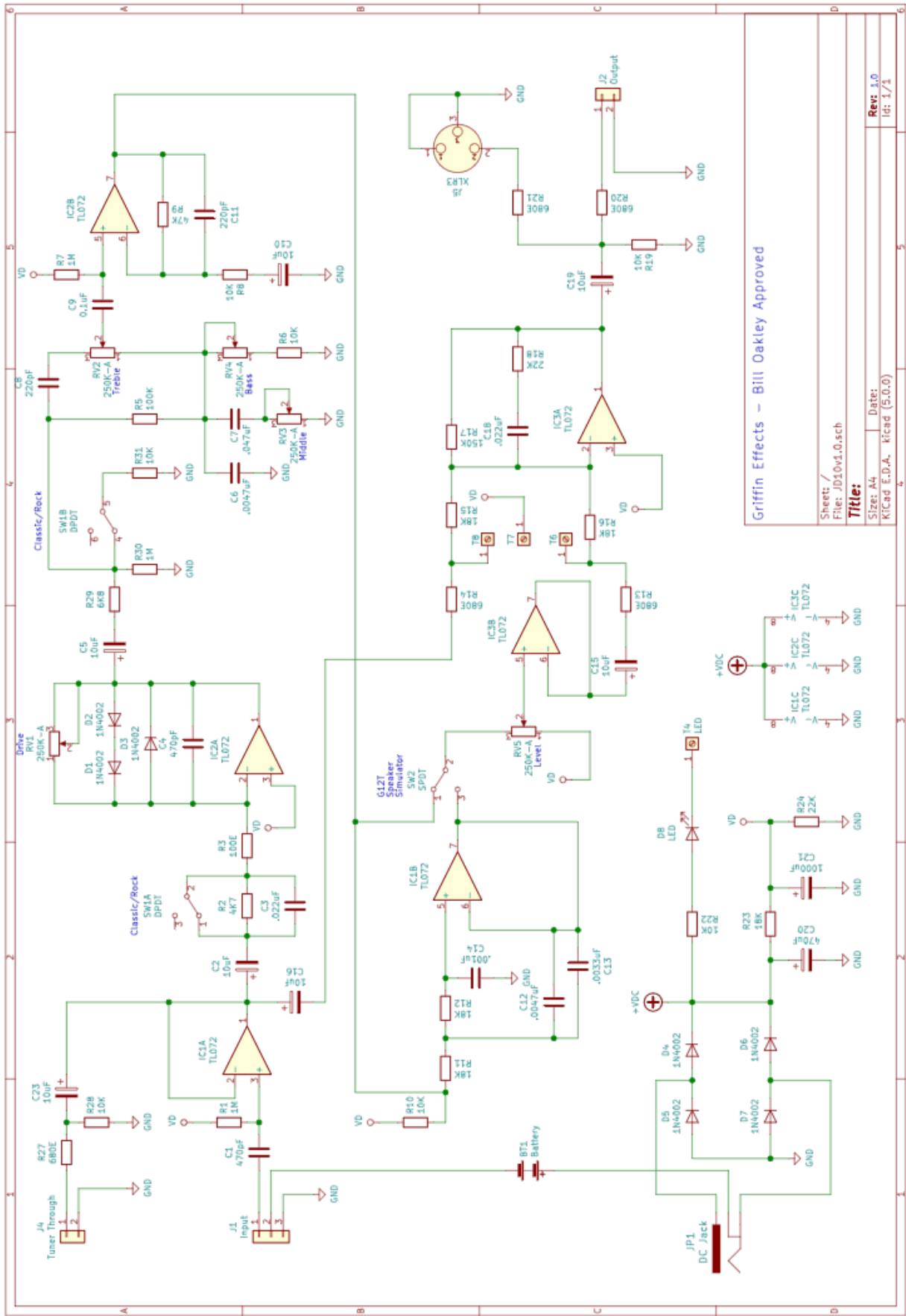
\*This is the LED resistor which was 10K in the original. Use whatever value is appropriate for your LED.

Original JD10 Bypass Wiring:



## True Bypass Wiring:





Griffin Effects – Bill Oakley Approved

Sheet: /

File: J010v1.0.sch

Title:

Size: A4

Date:

KiCad E.D.A. v5.0.0

Rev: 1.0

Id: 1/1

Revisions: