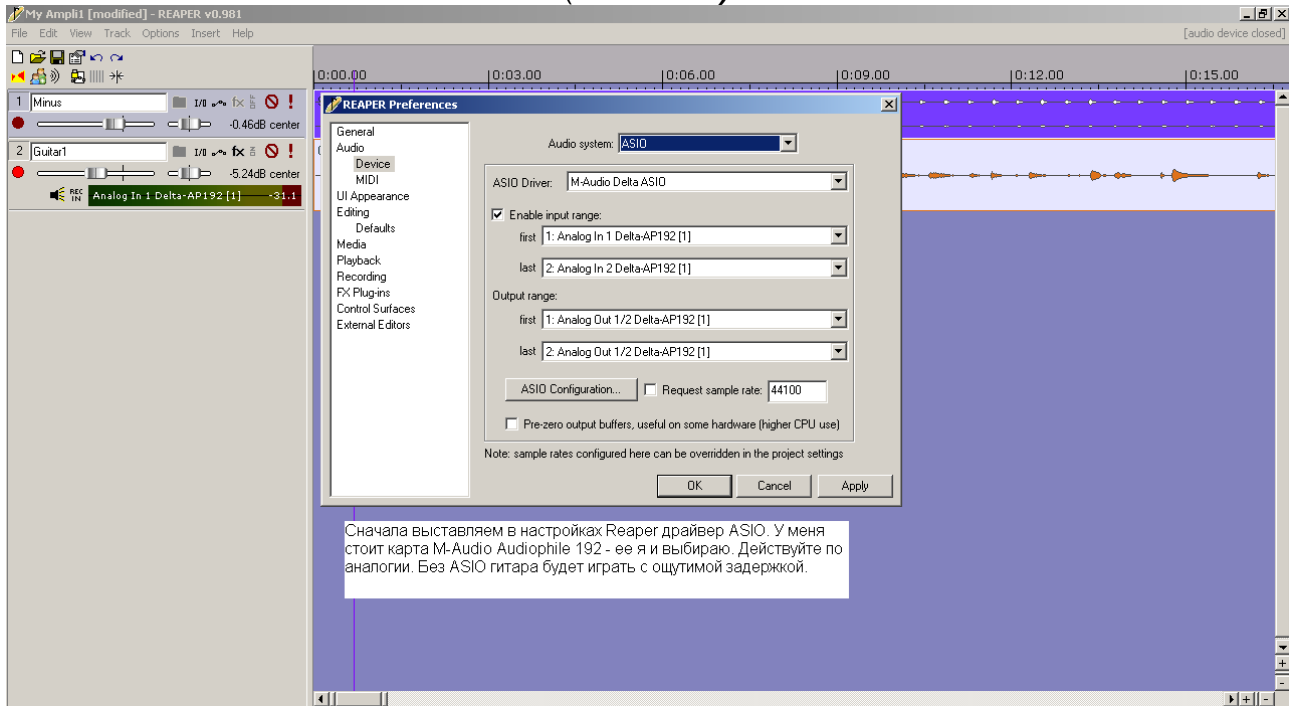


Reaper + Amplitube 2

(Fast Start)



REAPER Preferences

General

Audio system: ASIO

ASIO Driver: M-Audio Delta ASIO

☒ Enable input range:

first: 1: Analog In 1 Delta-AP192 [1]

last: 2: Analog In 2 Delta-AP192 [1]

Output range:

first: 1: Analog Out 1/2 Delta-AP192 [1]

last: 2: Analog Out 1/2 Delta-AP192 [1]

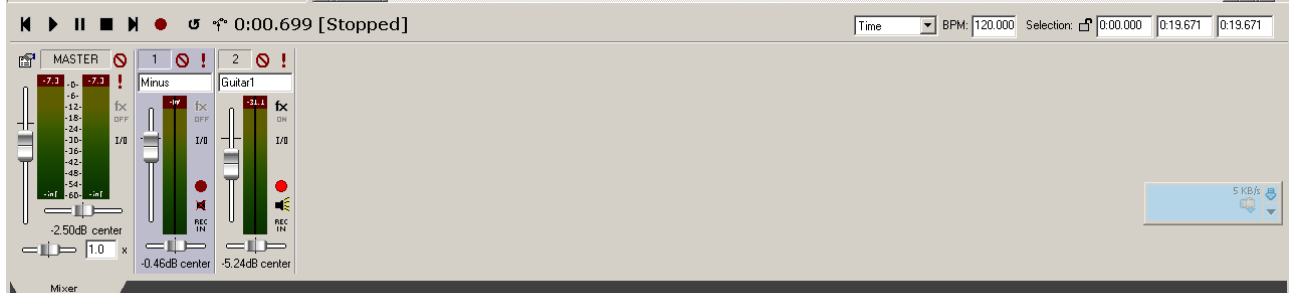
ASIO Configuration... ☐ Request sample rate: 44100

☐ Pre-zero output buffers, useful on some hardware (higher CPU use)

Note: sample rates configured here can be overridden in the project settings

OK Cancel Apply

Сначала выставляем в настройках Reaper драйвер ASIO. У меня стоит карта M-Audio Audiophile 192 - ее я и выбираю. Действуйте по аналогии. Без ASIO гитара будет играть с ощутимой задержкой.



0:00.699 [Stopped]

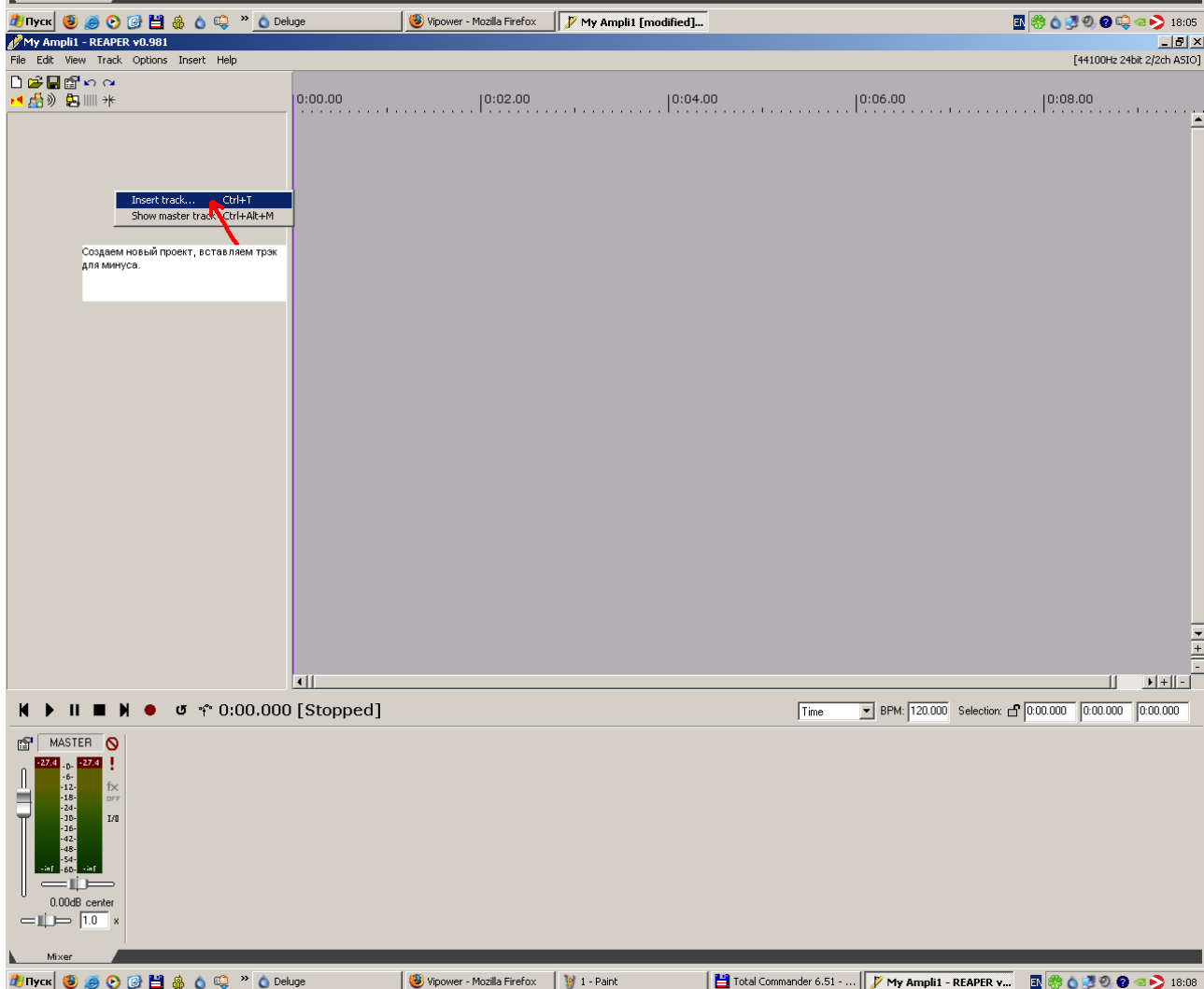
Time BPM: 120.000 Selection: 0:00.000 0:19.671 0:19.671

MASTER -7.3 dB

Minus -0.46dB center

Guitar1 -5.24dB center

Mixer



0:00.000 [Stopped]

Time BPM: 120.000 Selection: 0:00.000 0:00.000 0:00.000

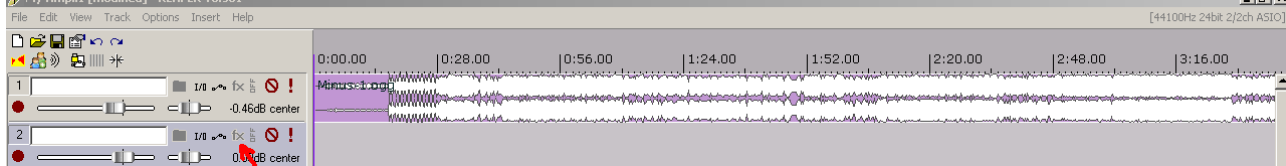
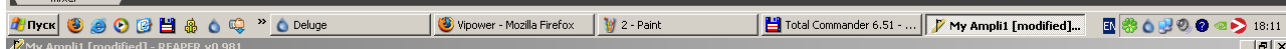
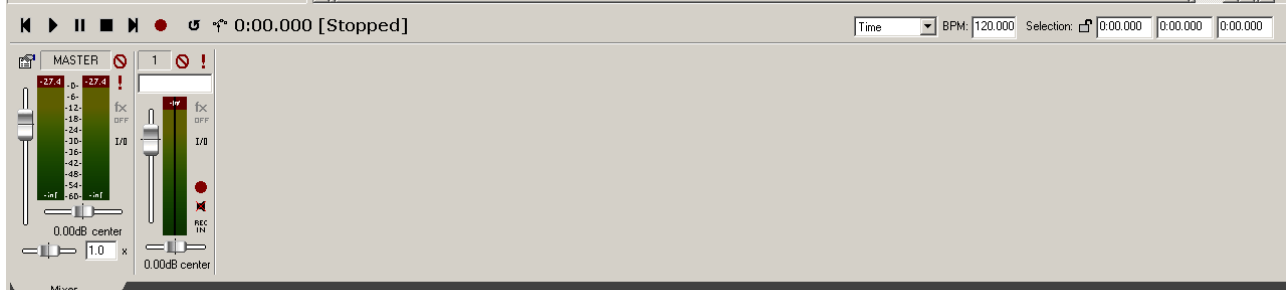
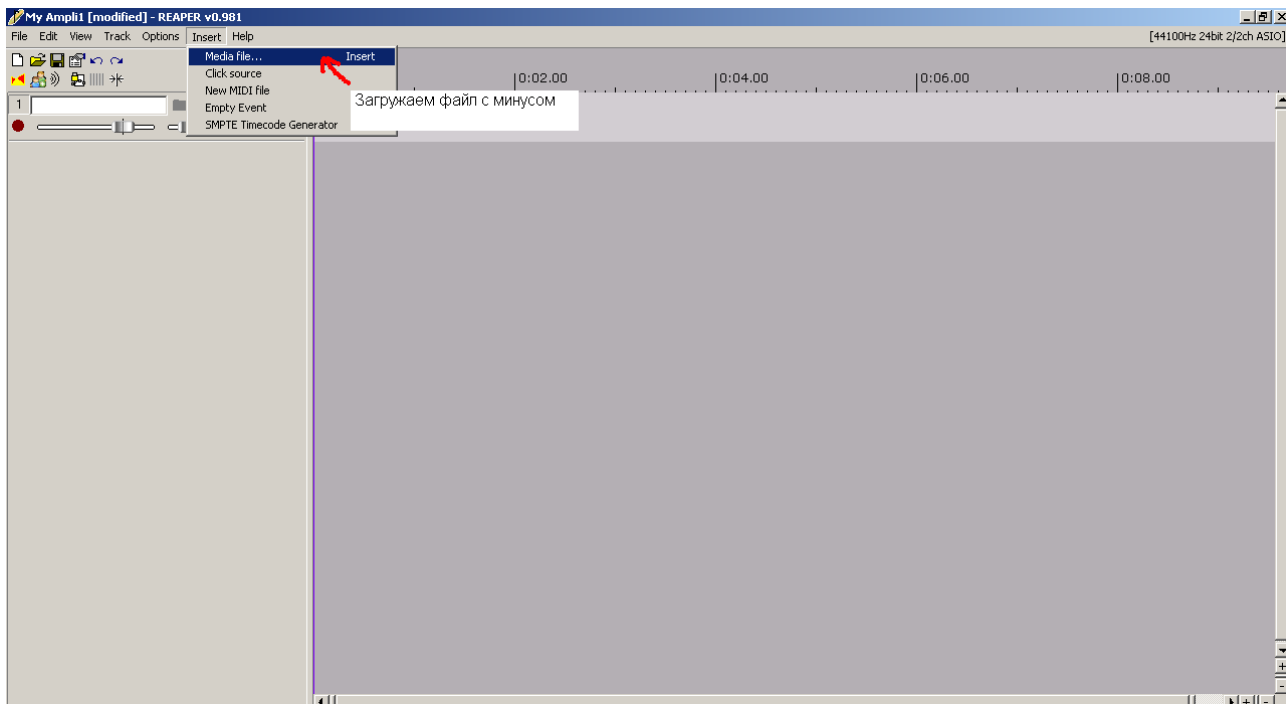
MASTER -27.4 dB

Mixer

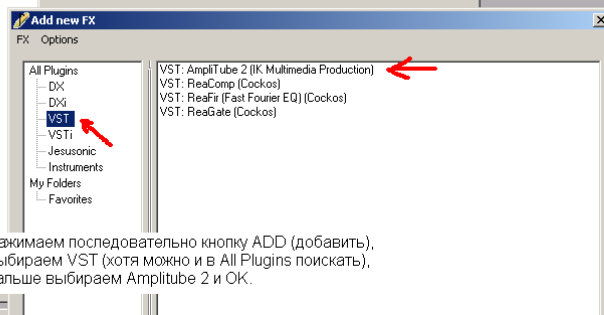
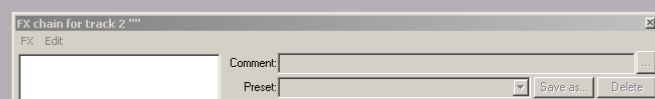
Insert track... Ctrl+T

Show master track Ctrl+Alt+M

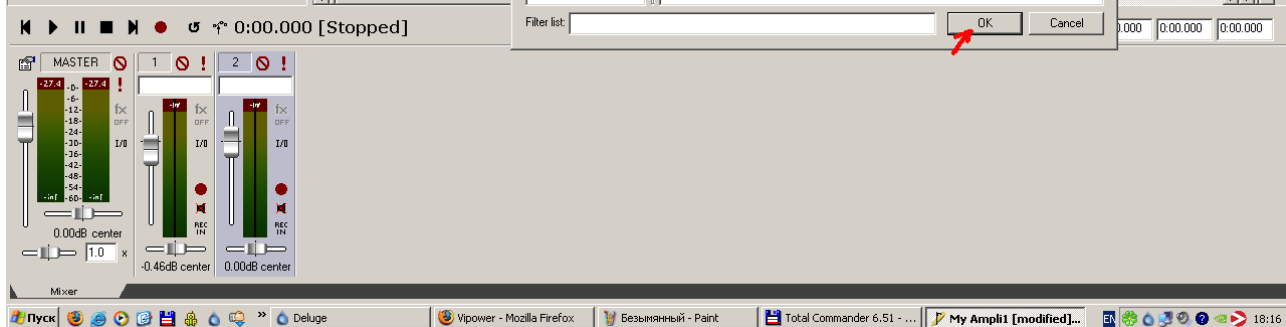
Создаем новый проект, вставляем трек для минуса.

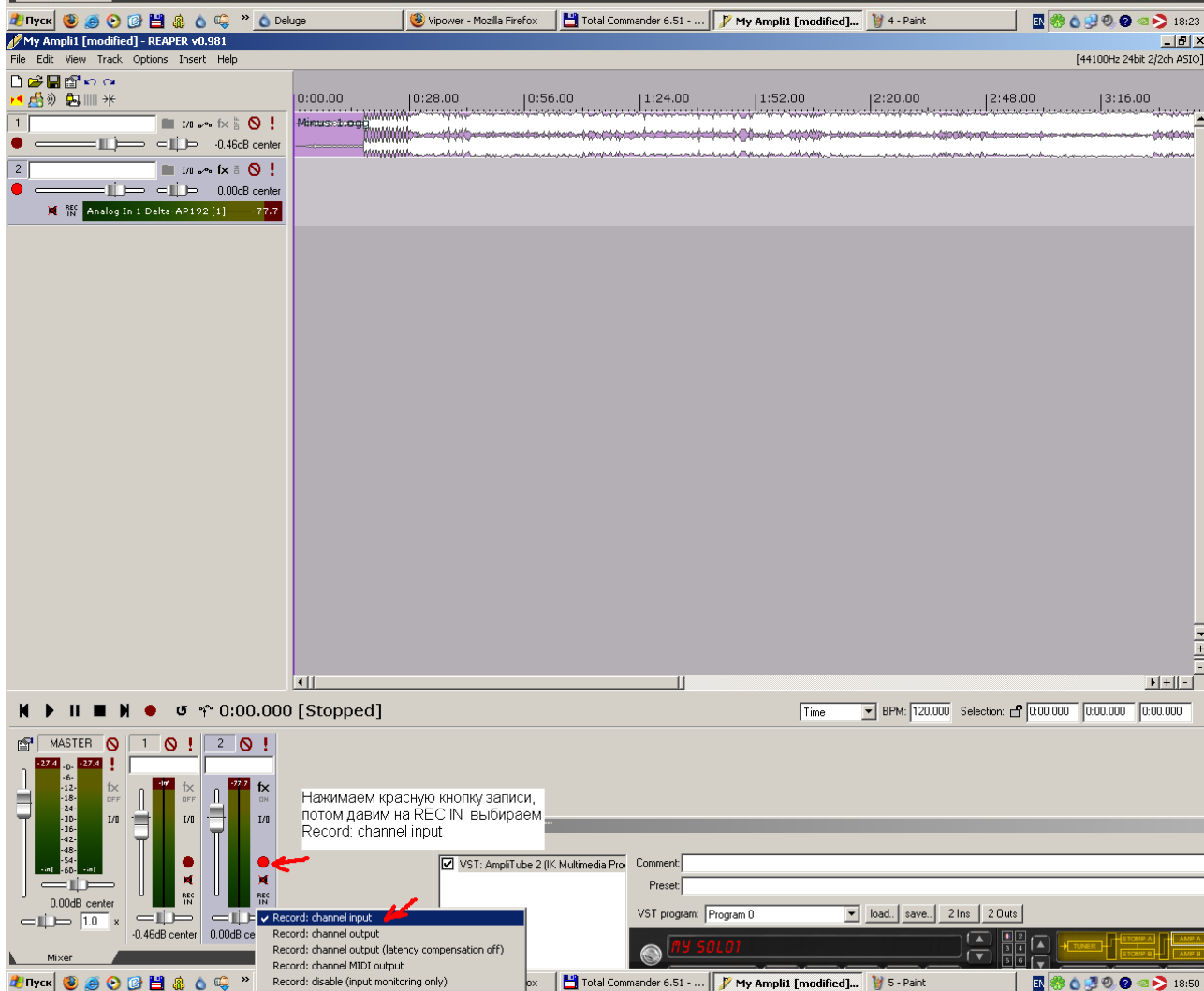
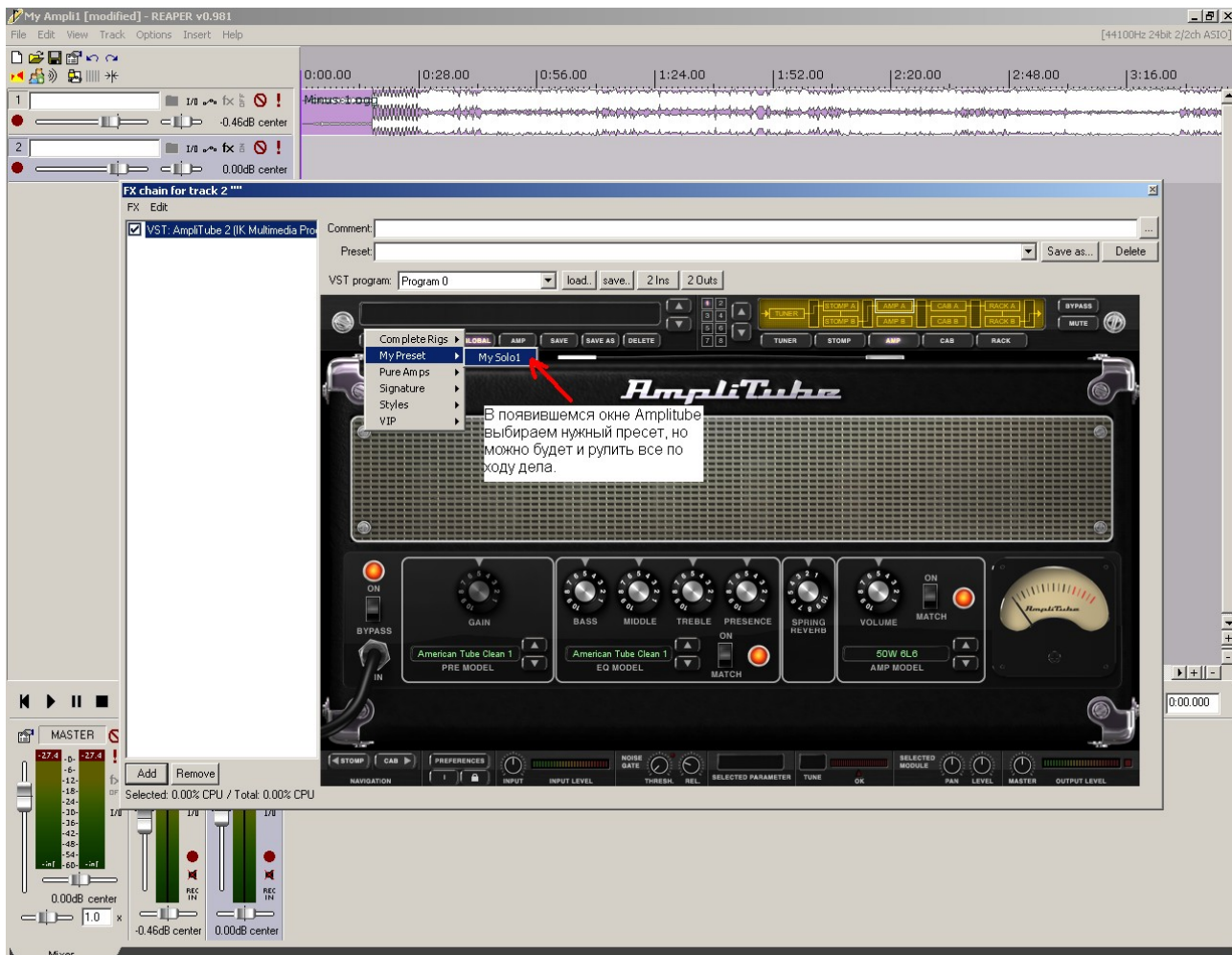


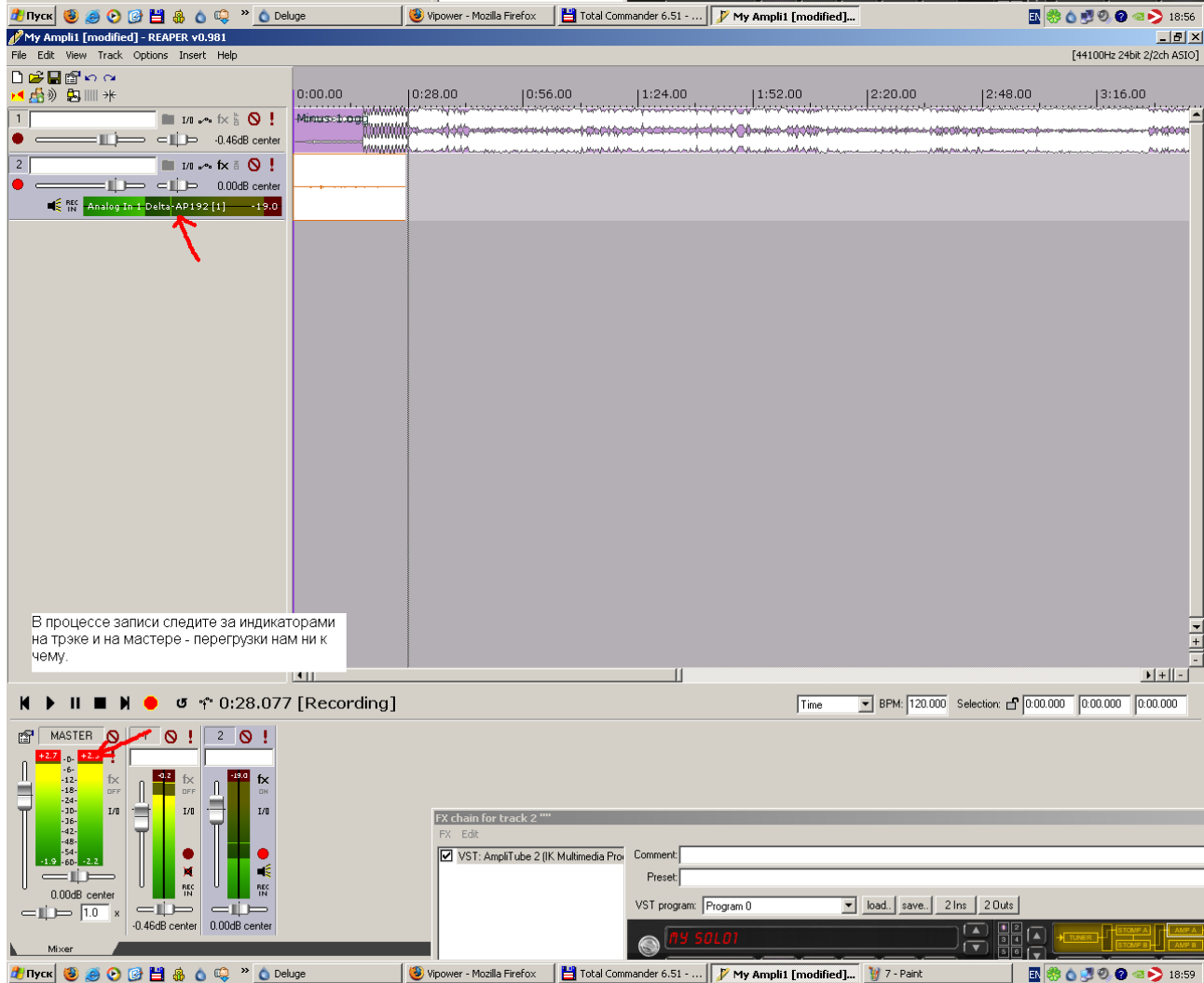
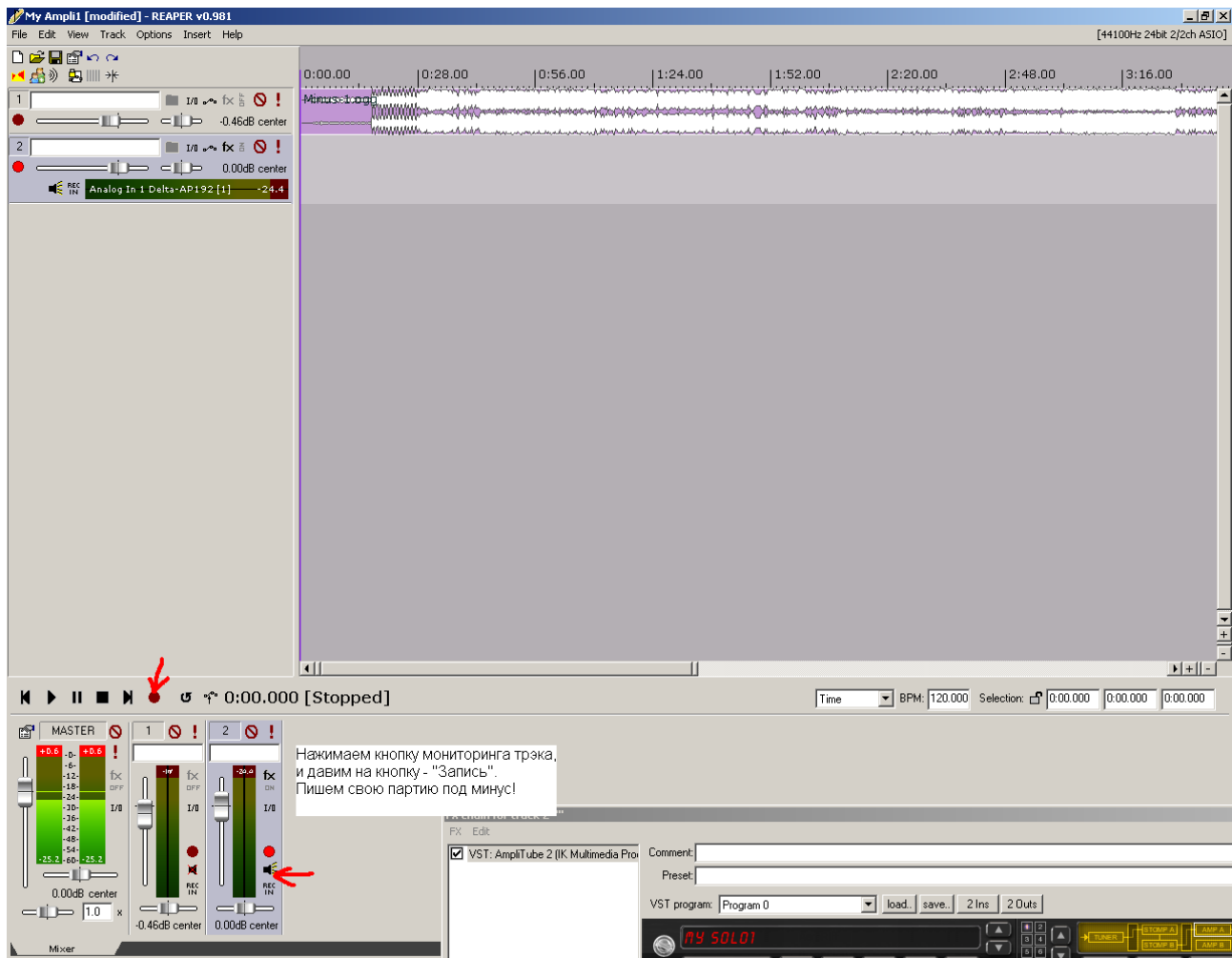
Создаем трек для записи гитары через Amplitude2, нажимаем кнопку FX.

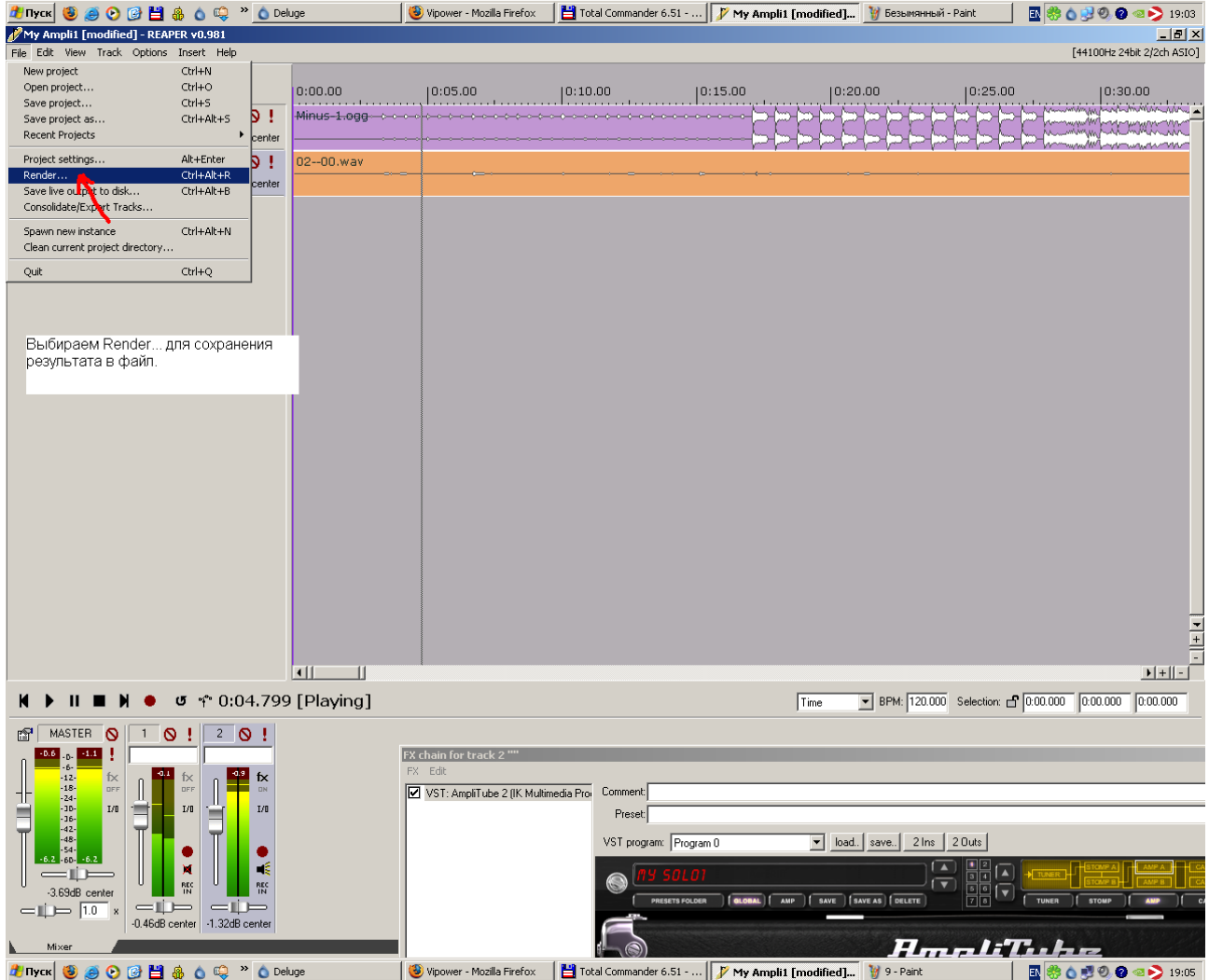
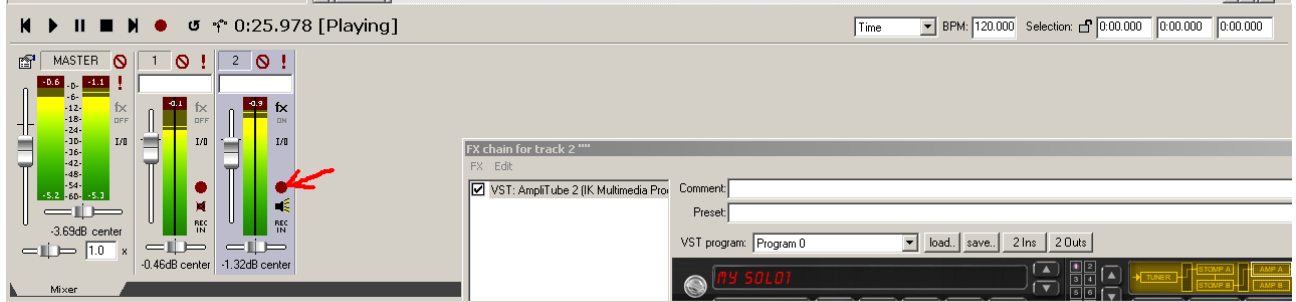
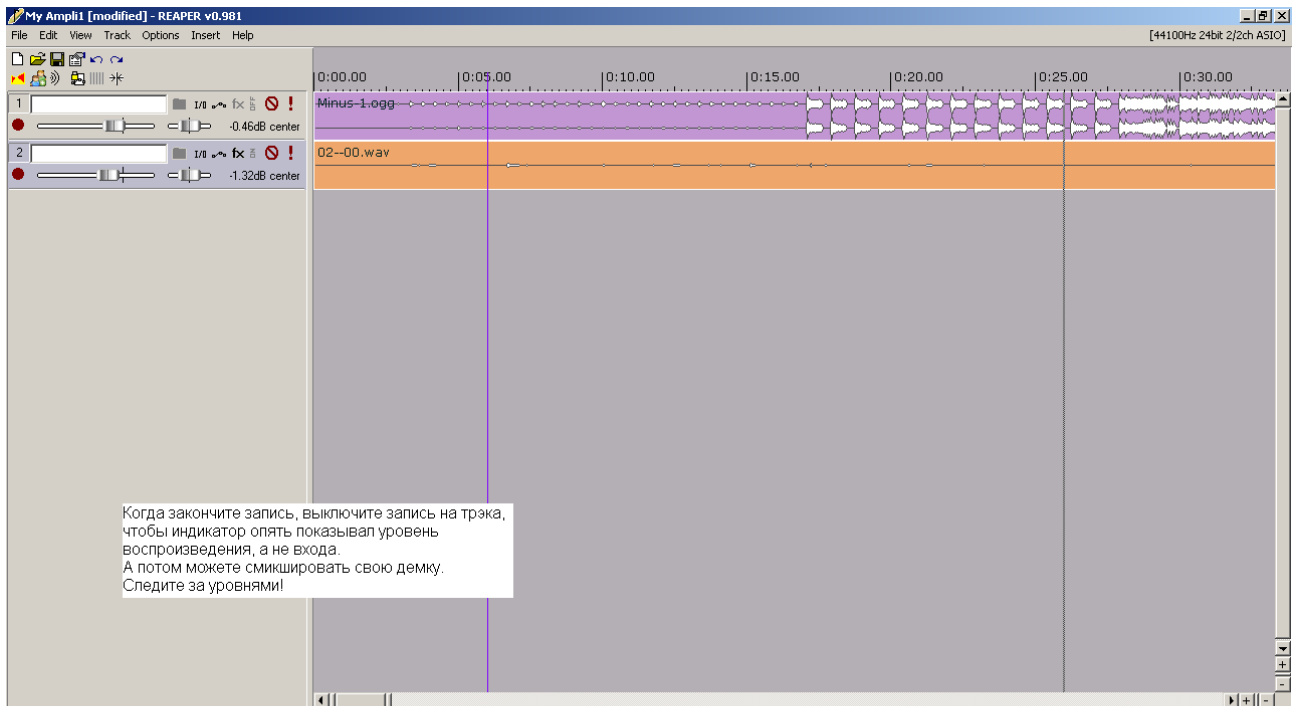


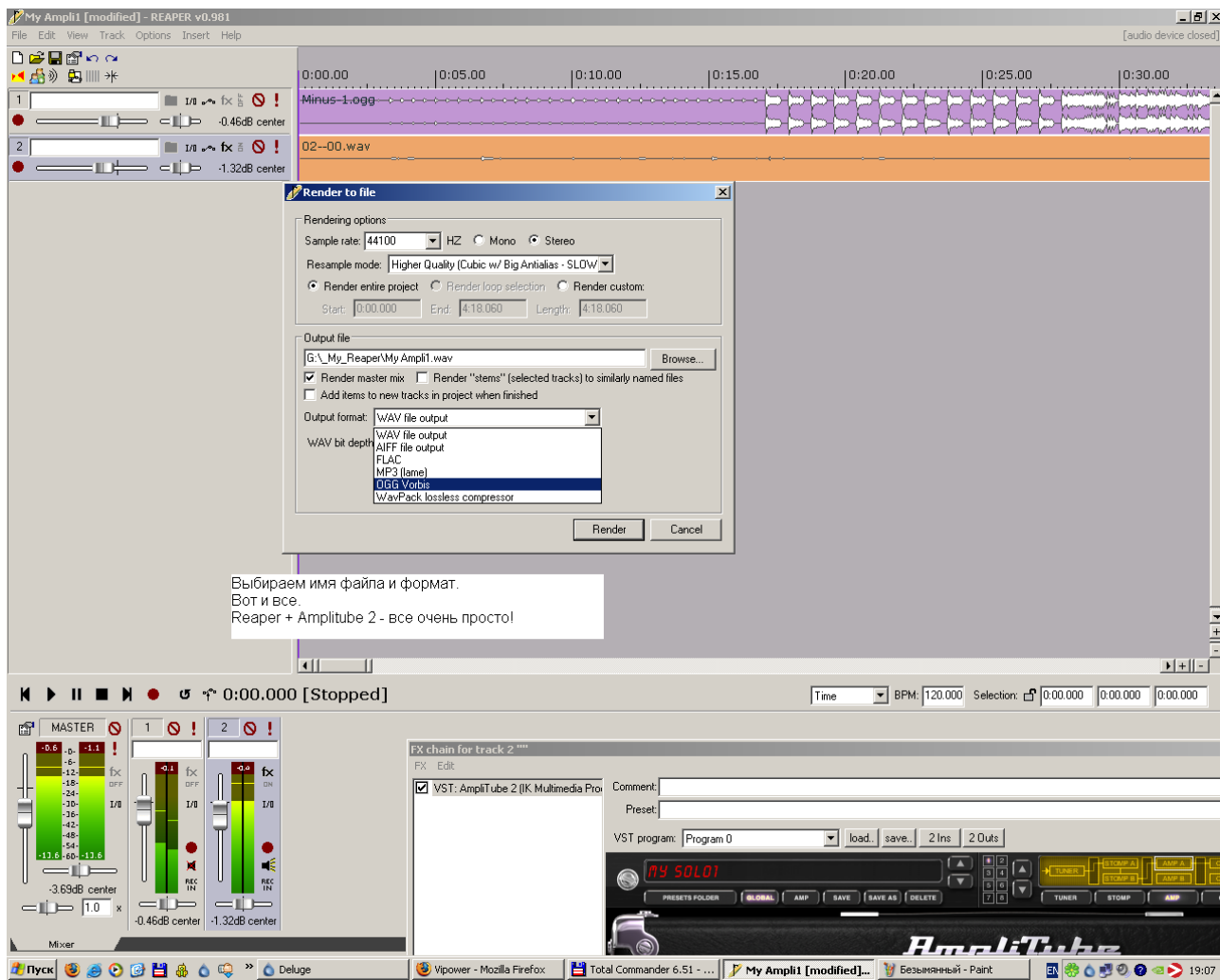
Нажимаем последовательно кнопку ADD (добавить), выбираем VST (хотя можно и в All Plugins поискать), дальше выбираем Amplitude 2 и OK.











04.07.2008 by **Hunted**

